

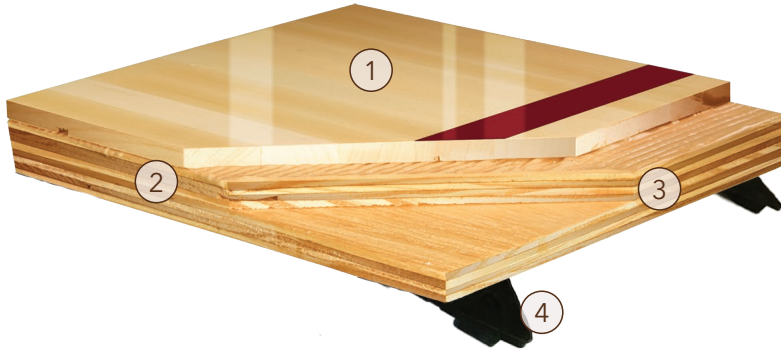
SuperBond™ Flex

FIXED SYSTEM



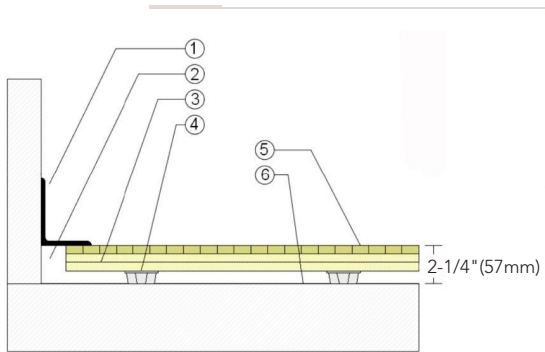
SuperBond™ Flex is a mastic set edge-grain maple parquet adhered to a floating subfloor system. Used in sport floor applications where system height is a factor.





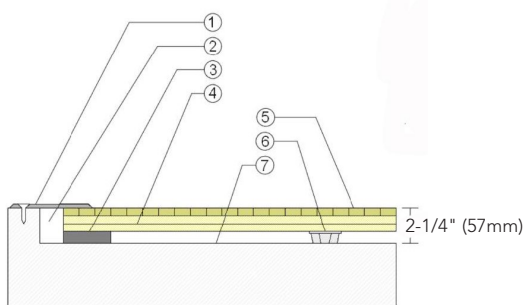
- 1. 7/16" (11mm) Acer Maple SuperBond™ Flooring
- 2. Elastomeric Glue
- 3. SuperBond Flex Plywood Subfloor Panels
- 4. 3/4" (19mm) TriPower™ Pads

WALLBASE



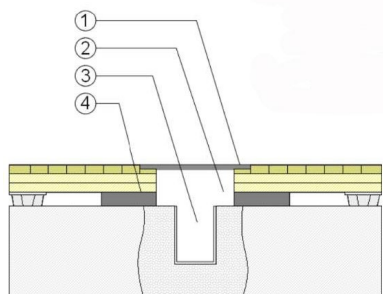
- 1. 3" x 4" (76mm x 101mm) Vent Cove Base
- 2. 1-1/2" (38mm) Min. Expansion Space
- 3. SuperBond Flex Plywood Subfloor Panel
- 4. 3/4" (19mm) TriPower Pad
- 5. 7/16" (11mm) Acer MFMA Maple Flooring
- 6. Vapor Retarder

THRESHOLD



- 1. 1/4" (6mm) Aluminum Threshold
- 2. 1-1/2" (38mm) Min. Expansion Space
- 3. Solid Blocking at Doorway
- 4. SuperBond Flex Plywood Subfloor Panel
- 5. 7/16" (11mm) Acer MFMA Maple Flooring
- 6. 3/4" (19mm) TriPower Pad
- 7. Vapor Retarder

EQUIPMENT



- 1. Floor Plate
- 2. 1-1/2" (38mm) Min. Expansion Space at all Inserts & Electrical Penetrations
- 3. Concrete Floor Penetration
- 4. Solid Blocking at Insert

Certified



Green Status and LEED Contributors



- FSC® Certified Maple - MR
- FSC® Certified Subfloor Components - MR
- Environmental Quality - EQ
- Regional Materials - MR

Resilience

3/4" (19mm) TriPower™ Pads
*Other pad options available

Slab Depression

- 1/2" (12mm) Flooring -
- 2-1/4" (57mm)

Subfloor Construction

Plywood

System Type

Floating

Testing Laboratory Partners



It is the policy of Aacer Sports Flooring to continuously improve its line of products. Therefore, Aacer Sports Flooring reserves the right to change, modify or discontinue systems, specifications and accessories of all products at any time without notice or obligation to purchaser.

