

# SuperBond™

FIXED SYSTEM



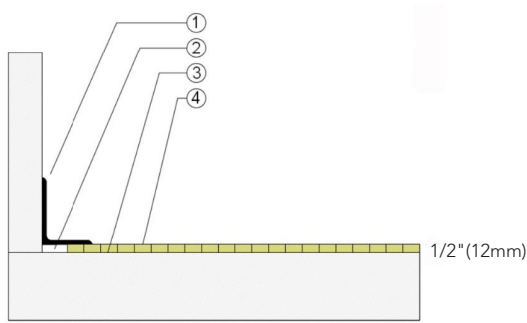
**SuperBond™ is a mastic set edge-grain maple parquet which is usually adhered directly to a concrete substrate. The low profile makes it ideal for retrofit and commercial projects. It is not generally used for sport applications.**





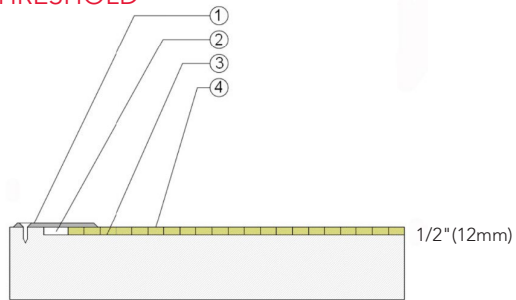
- 1. Precision-milled Acer Maple
- 2. Elastomeric Glue
- 3. Concrete

## WALLBASE



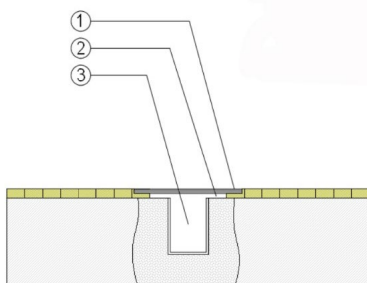
- 1. 3" x 4" (76mm x 101mm) Vent Cove Base
- 2. 1-1/2" (38mm) Min. Expansion Space
- 3. Elastomeric Adhesive
- 4. 7/16" (11mm) Acer MFMA Maple Flooring

## THRESHOLD



- 1. 1/4" (6mm) Aluminum Threshold
- 2. 1-1/2" (38mm) Min. Expansion Space
- 3. Elastomeric Adhesive
- 4. 7/16" (11mm) Acer MFMA Maple Flooring

## EQUIPMENT



- 1. Floor Plate
- 2. 1-1/2" (38mm) Min. Expansion Space at all Inserts & Electrical Penetrations
- 3. Concrete Floor Penetration

Green Status and LEED Contributors



- FSC® Certified Maple - MR
- Environmental Quality - EQ
- Regional Materials - MR

Slab Depression

- 25/32" (20mm) Flooring - 3-1/8" (80mm)

Optional PowerSleeper Systems

- AacerCush I
- AacerCush II
- Anchored AacerCush I
- Anchored AacerCush I+

Subfloor Construction

Sleeper Plywood

System Type

Fixed

Testing Laboratory Partners



*It is the policy of Aacer Sports Flooring to continuously improve its line of products. Therefore, Aacer Sports Flooring reserves the right to change, modify or discontinue systems, specifications and accessories of all products at any time without notice or obligation to purchaser.*