

Anchored PowerSleeper™ LP

FIXED RESILIENT SYSTEM



AACER[™]
SPORTS FLOORING
an Infinity Wood Floors Company

Anchored PowerSleeper™ LP is a self-blocking anchored system that fully engages the resilient pad to ensure uniform performance and structural integrity. This system combines pre-engineered sleepers with a plywood underlayment for greater dimensional strength. It is suitable for both new and retrofit sports floor applications and commercial projects.



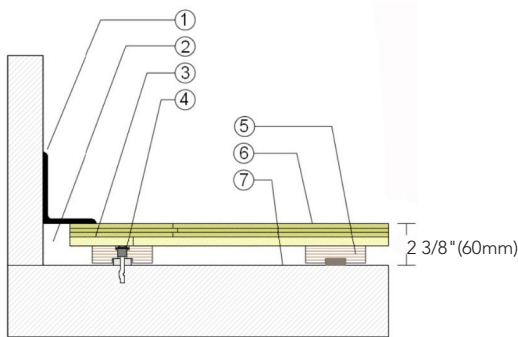
Anchored PowerSleeper™ LP

Anchored PowerSleeper LP is a uniform floor system providing excellent air flow and a manner to protect subfloor and elastic components when impacted with heavy non-athletic loads.



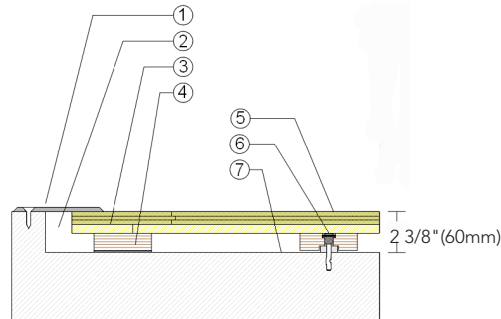
- 1. Precision-milled Aacer Maple
- 2. Plywood Subfloor
- 3. Pre-engineered Laminated Sleeper
- 4. Steel Concrete Anchor and Bushing
- 5. 1/2" (12mm) Recessed ECO Pad

WALL BASE



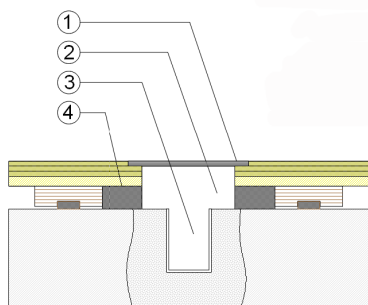
- 1. 3" x 4" (76mm x 101mm) Vent Cove Base
- 2. 1-1/2" (38mm) Min. Expansion Space
- 3. 1/2" x 5-1/2" (12mm x 140mm) Plywood
- 4. Steel Concrete Anchor and Bushing
- 5. Engineered Plywood Sleeper with recessed 1/2" (12mm) ECO Pad
- 6. 25/32" (20mm) MFMA Maple Flooring
- 7. Vapor Retarder

THRESHOLD



- 1. 1/4" (6mm) Aluminum Threshold
- 2. 1-1/2" (38mm) Min. Expansion Space
- 3. 1/2" x 5-1/2" (12mm x 140mm) Plywood
- 4. Engineered Plywood Sleeper with Solid Blocking Attached
- 5. 25/32" (20mm) MFMA Maple Flooring
- 6. Steel Concrete Anchor and Bushing
- 7. Vapor Retarder

EQUIPMENT



- 1. Floor Plate
- 2. 1-1/2" (38mm) Min. Expansion Space at all Inserts & Electrical Penetrations
- 3. Concrete Floor Penetration
- 4. Solid Blocking at Insert

Anchorage

Drill and Pin

Green Status and LEED Contributors



- FSC® Certified Maple - MR
- FSC® Certified Subfloor Components - MR
- Environmental Quality - EQ
- Regional Materials - MR

Resilience

1/2" (12mm) ECO Pad

Slab Depression

- 25/32" (20mm) flooring - 2 3/8" (60mm)

System Type

Fixed Resilient

Optional PowerSleeper Systems

Anchored PowerSleeper SE
Anchored PowerSleeper
Anchored PowerLoc LP
Anchored PowerLoc

Optional Protection System

PowerVent™ Airflow System

Subfloor Construction

Sleeper Plywood

Testing Laboratory Partners



It is the policy of Infinity Wood Floors to continuously improve its line of products. Therefore, Infinity Wood Floors reserves the right to change, modify or discontinue systems, specifications and accessories of all products at any time without notice or obligation to purchaser.



see us at
Sweets.com

