

MultiStage

FLOATING SYSTEM

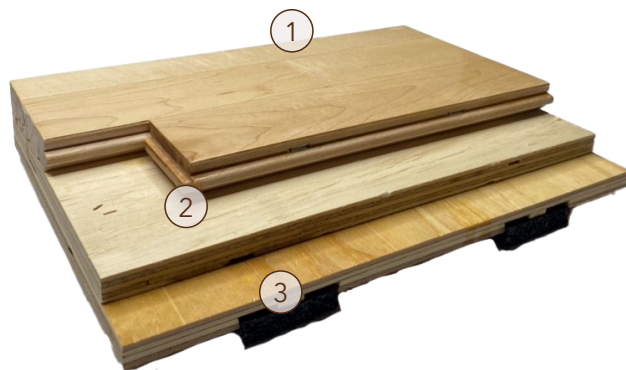


Subfloor panels manufactured using a CNC process to provide accurate depth and location of specific recessed resilient pad pockets including special “MultiStage” ridges, creating desired reaction to activity ranging from light to aggressive impacts.



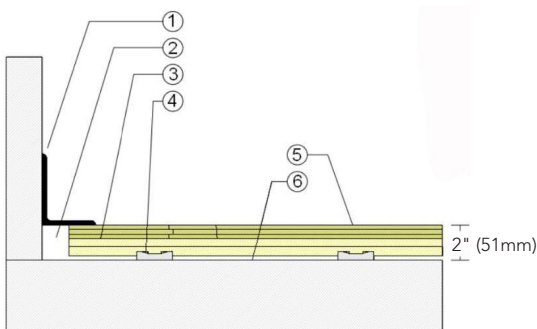
MultiStage

MultiStage offers a highly resilient athletic floor in which elastic ECO pads react specifically to light and aggressive impacts.



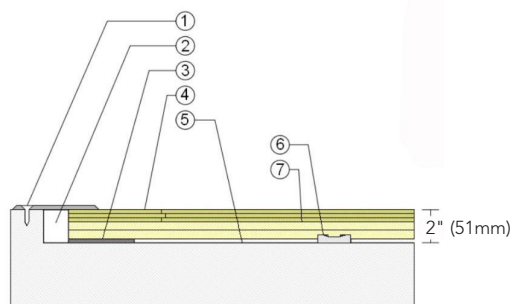
1. Precision-milled Aacer Maple
2. Engineered MultiStage Panel
3. Recessed ECO Resilient Pad

WALLBASE



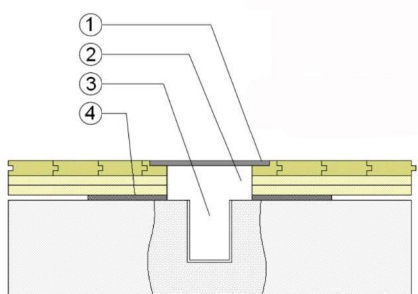
1. 3" x 4" (76mm x 101mm) Vent Cove Base
2. 1-1/2" (38mm) Min. Expansion Space
3. Engineered MultiStage Sufloor
4. 1/2" (12mm) ECO Resilient Pads
5. 25/32" (20mm) MFMA Maple Flooring
6. Vapor Retarder

THRESHOLD



1. 1/4" (6mm) Aluminum Threshold
2. 1-1/2" (38mm) Min. Expansion Space
3. Solid Blocking at Doorway
4. 25/32" (20mm) MFMA Maple Flooring
5. Vapor Retarder
6. 1/2" (12mm) ECO Resilient Pads
7. Engineered MultiStage Subfloor

EQUIPMENT



1. Floor Plate
2. 1-1/2" (38mm) Min. Expansion Space at all Inserts & Electrical Penetrations
3. Concrete Floor Penetration
4. Solid Blocking at Insert

Green Status
and LEED
Contributors



- FSC® Certified Maple - MR
- FSC® Certified Subfloor Components - MR
- Environmental Quality - EQ
- Regional Materials - MR

Resilience

1/2" (12mm) ECO Resilient Pads

Slab
Depression

- 25/32" (20mm) flooring - 2" (51mm)

Optional
MultiStage
Systems

MultiStage HC
MultiStage HC LP

Subfloor
Construction

Pre-manufactured Panels

System Type

Floating

Testing
Laboratory
Partners



It is the policy of Infinity Wood Floors to continuously improve its line of products. Therefore, Infinity Wood Floors reserves the right to change, modify or discontinue systems, specifications and accessories of all products at any time without notice or obligation to purchaser.



see us at
Sweets.com



Feb2024