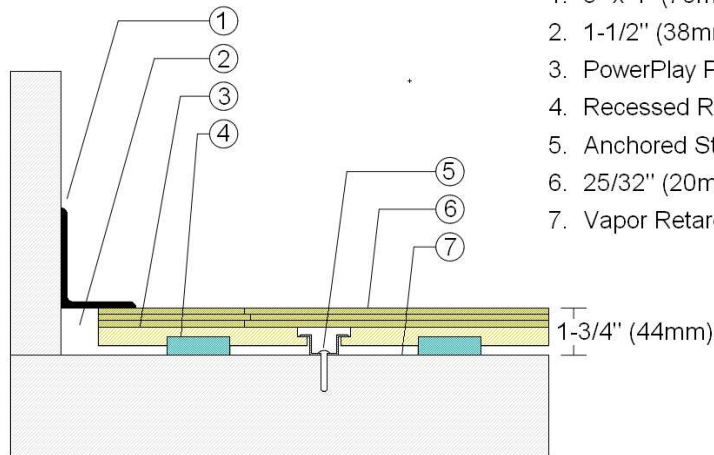
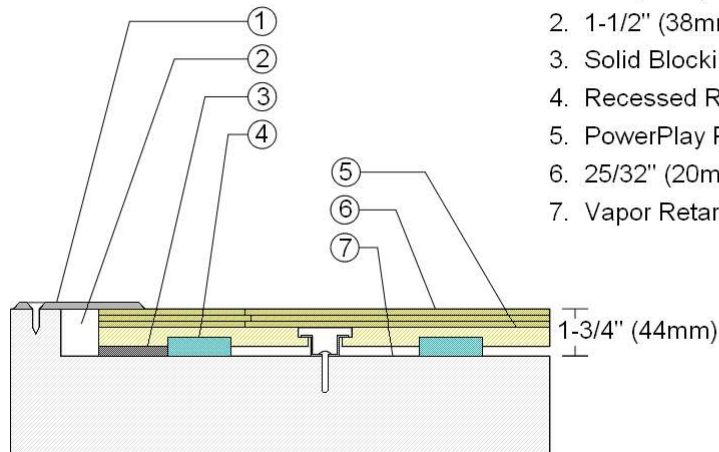


WALLBASE



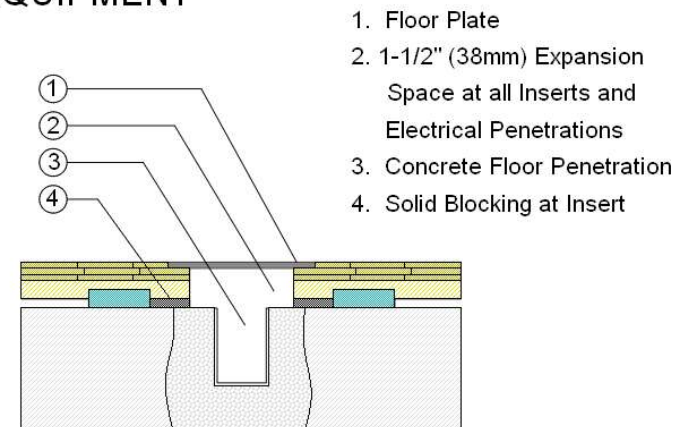
1. 3" x 4" (76mm x 101mm) Vent Cove Base
2. 1-1/2" (38mm) min. Expansion Space
3. PowerPlay Panel Subfloor
4. Recessed Resilient Cushion
5. Anchored Steel Channel Section
6. 25/32" (20mm) MFMA Maple Flooring
7. Vapor Retarder

THRESHOLD



1. 1/4" (6mm) Aluminum Threshold
2. 1-1/2" (38mm) min. Expansion Space
3. Solid Blocking at Doorway
4. Recessed Resilient Cushion
5. PowerPlay Panel Subfloor
6. 25/32" (20mm) MFMA Maple Flooring
7. Vapor Retarder

EQUIPMENT



1. Floor Plate
2. 1-1/2" (38mm) Expansion Space at all Inserts and Electrical Penetrations
3. Concrete Floor Penetration
4. Solid Blocking at Insert

Description: POWERPLAY PANEL II

Drawn By: RR

Date: 1/17/24

Resilience: 3/4" (19mm) Foam Cushions

Revisions

| ID | Description | By | Date |
|----|-------------|----|------|
| | | | |
| | | | |