

PowerPlay Panel II

FIXED RESILIENT SYSTEM

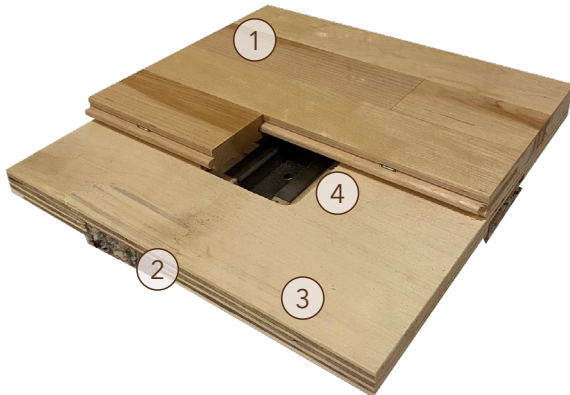


Fabricated PowerPlay Panels include recessed lineal cushions aligned continuously wall to wall below pre-assembled subfloor panels offering a highly resilient athletic floor system. A design that also includes sectional steel channel anchorage for added environmental stability.



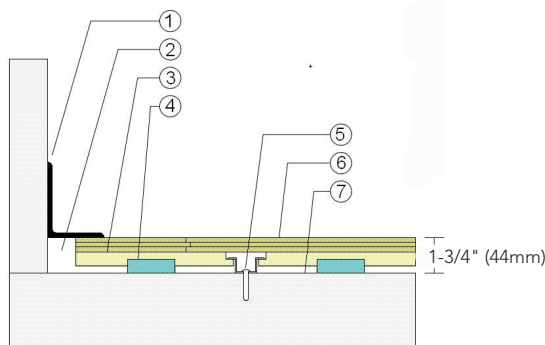
PowerPlay Panel II

PowerPlay Panel II includes recessed resilient lineal cushioning for high shock absorbance and reduced vibration.



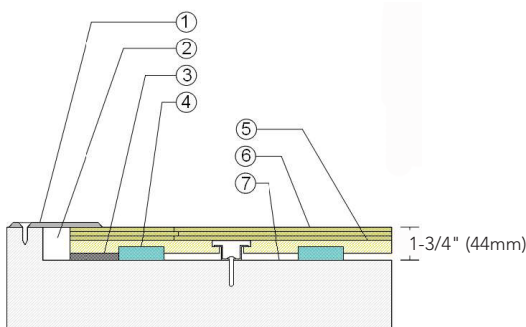
1. Precision-milled Aacer Maple
2. Recessed Panel Cushion
3. Engineered PowerPlay Panel
4. Sectional Steel Channel Anchorage

WALLBASE



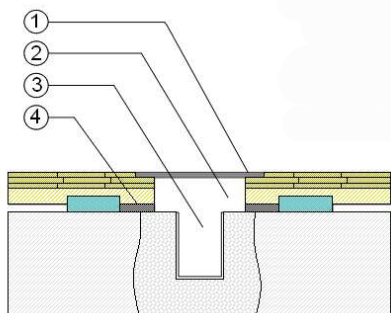
1. 3" x 4" (76mm x 101mm) Vent Cove Base
2. 1-1/2" (38mm) Min. Expansion Space
3. PowerPlay Panel Subfloor
4. Recessed Resilient Cushion
5. Anchored Steel Channel Section
6. 25/32" (20mm) MFMA Maple Flooring
7. Vapor Retarder

THRESHOLD



1. 1/4" (6mm) Aluminum Threshold
2. 1-1/2" (38mm) Min. Expansion Space
3. Solid Blocking at Doorway
4. Recessed Resilient Cushion
5. PowerPlay Panel Subfloor
6. 25/32" (20mm) MFMA Maple Flooring
7. Vapor Retarder

EQUIPMENT



1. Floor Plate
2. 1-1/2" (38mm) Min. Expansion Space at all Inserts & Electrical Penetrations
3. Concrete Floor Penetration
4. Solid Blocking at Insert

Anchorage

Steel Channel

Green Status and LEED Contributors



- FSC® Certified Maple - MR
- FSC® Certified Subfloor Components - MR
- Environmental Quality - EQ
- Regional Materials - MR

Resilience

3/4" (19mm) Recessed Resilient Cushion

Slab Depression

- 25/32" (20mm) flooring - 1-3/4" (44mm)

Optional PowerPlay Systems

PowerPlay Panel
PowerPlay Cradle
PowerPlay Edge
PowerPlay Trax

Subfloor Construction

Pre-manufactured Panels

System Type

Fixed Resilient

Testing Laboratory Partners



It is the policy of Infinity Wood Floors to continuously improve its line of products. Therefore, Infinity Wood Floors reserves the right to change, modify or discontinue systems, specifications and accessories of all products at any time without notice or obligation to purchaser.