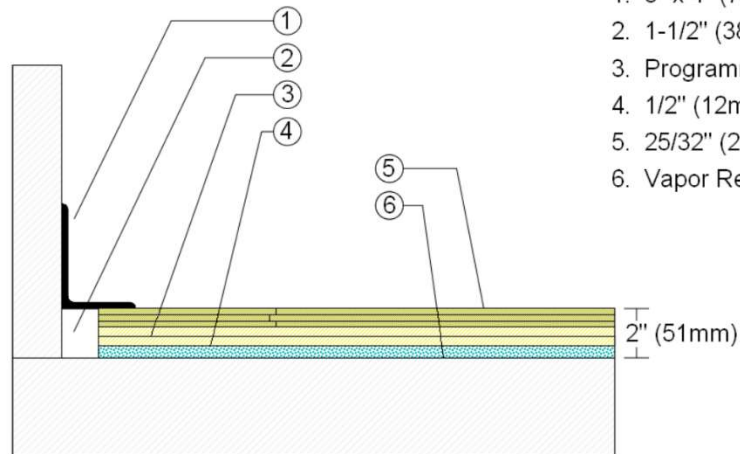


## WALLBASE



1. 3" x 4" (76mm x 101mm) Vent Cove Base
2. 1-1/2" (38mm) min. Expansion Space
3. Programme Dance II Subfloor Panel
4. 1/2" (12mm) Open Cell Resilient Blanket
5. 25/32" (20mm) MFMA Maple Flooring
6. Vapor Retarder

Description: Programme Dance II – Single Blanket

Resilience: 1/2" (12mm) Open Cell Blanket Foam

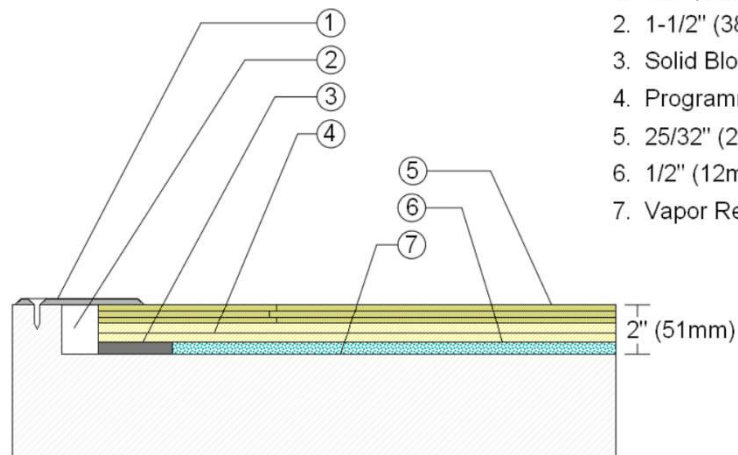
Drawn By: RR

Date: 12/14 /23

### Revisions

ID	Description	By	Date

## THRESHOLD



1. 1/4" (6mm) Aluminum Threshold
2. 1-1/2" (38mm) min. Expansion Space
3. Solid Blocking at Doorway
4. Programme Dance II Subfloor Panel
5. 25/32" (20mm) MFMA Maple
6. 1/2" (12mm) Open Cell Resilient Blanket
7. Vapor Retarder

## EQUIPMENT

1. Floor Plate
2. 1-1/2" (38mm) Expansion Space at all Inserts and Electrical Penetrations
3. Concrete Floor Penetration
4. Solid Blocking at Insert

