

**Description: ANCHORED POWERLOC**

**Resilience: 1/2" (12mm) TriPower pads**

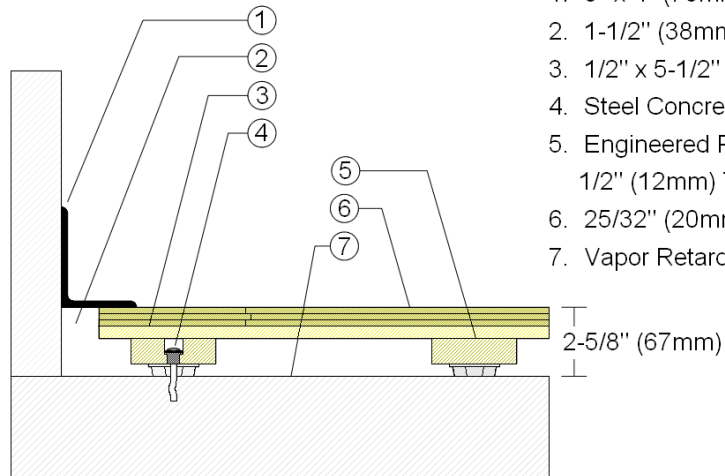
**Drawn By: RR**

**Date: 1/1/23**

**Revisions**

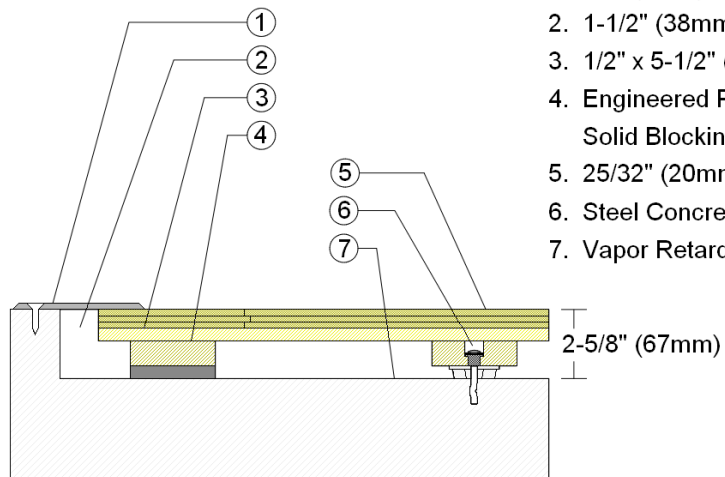
ID	Description	By	Date

## WALLBASE



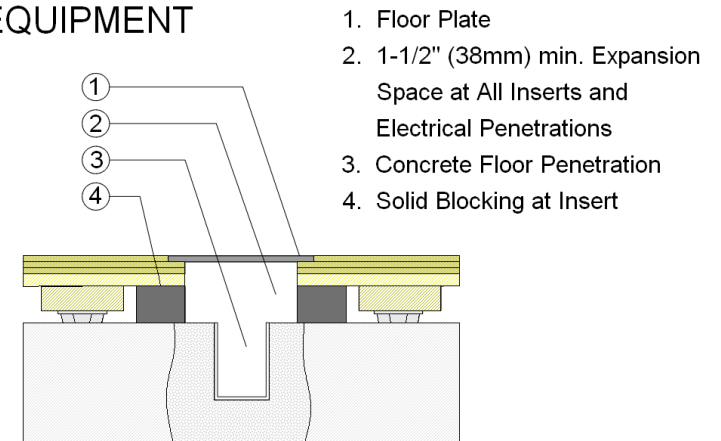
1. 3" x 4" (76mm x 101mm) Vent Cove Base
2. 1-1/2" (38mm) min. Expansion Space
3. 1/2" x 5-1/2" (12mm x 140mm) Pine Subfloor
4. Steel Concrete Anchor and Bushing
5. Engineered Plywood Sleeper with 1/2" (12mm) TriPower Resilient Pads
6. 25/32" (20mm) MFMA Maple Flooring
7. Vapor Retarder

## THRESHOLD



1. 1/4" (6mm) Aluminum Threshold
2. 1-1/2" (38mm) min. Expansion Space
3. 1/2" x 5-1/2" (12mm x 140mm) Pine Subfloor
4. Engineered Plywood Sleeper with Solid Blocking Attached
5. 25/32" (20mm) MFMA Maple Flooring
6. Steel Concrete Anchor and Bushing
7. Vapor Retarder

## EQUIPMENT



1. Floor Plate
2. 1-1/2" (38mm) min. Expansion Space at All Inserts and Electrical Penetrations
3. Concrete Floor Penetration
4. Solid Blocking at Insert