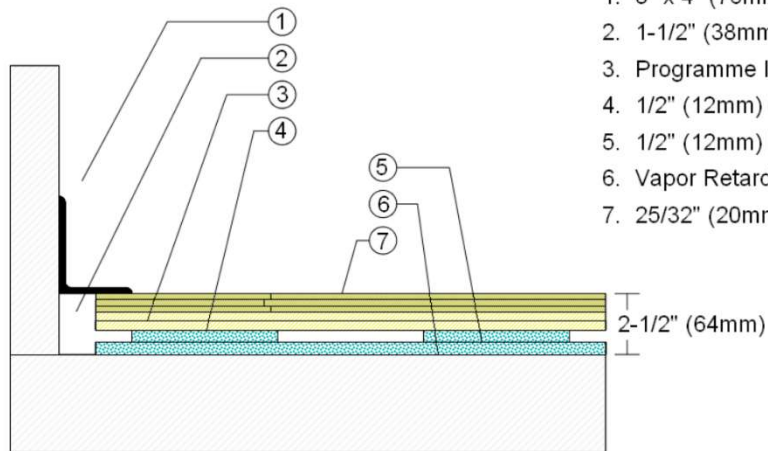




**AACER™**  
SPORTS FLOORING  
an Infinity Wood Floors Company

## WALLBASE



1. 3" x 4" (76mm x 101mm) Vent Cove Base
2. 1-1/2" (38mm) min. Expansion Space
3. Programme II Dance Subfloor Panel
4. 1/2" (12mm) Upper Resilient Blanket Section
5. 1/2" (12mm) Lower Resilient Blanket
6. Vapor Retarder
7. 25/32" (20mm) MFMA Maple Flooring

Description: AacerFlex II CB\_Dual Resilience

Resilience: Two Layer 1/2" (12mm) Open Cell Foam

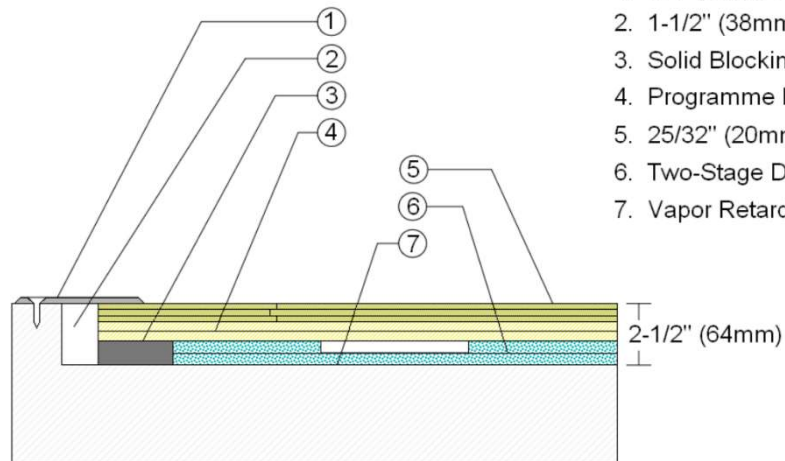
Drawn By: RR

Date: 12/6 /23

### Revisions

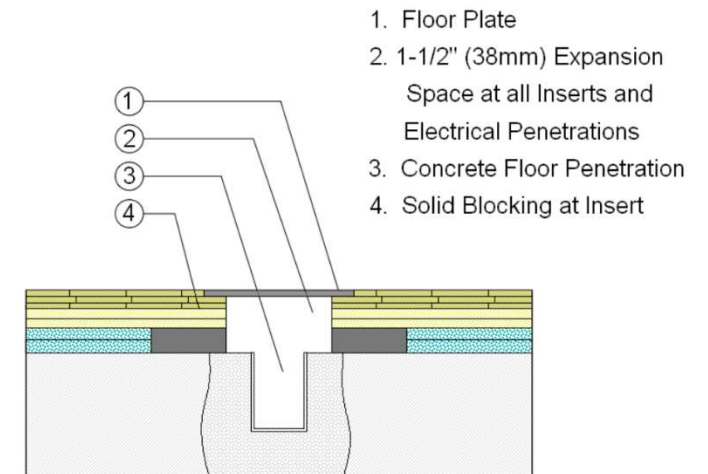
ID	Description	By	Date

## THRESHOLD



1. 1/4" (6mm) Aluminum Threshold
2. 1-1/2" (38mm) min. Expansion Space
3. Solid Blocking at Doorway
4. Programme II Dance Subfloor Panel
5. 25/32" (20mm) MFMA Maple
6. Two-Stage Double Layer Resilient Blanket
7. Vapor Retarder

## EQUIPMENT



1. Floor Plate
2. 1-1/2" (38mm) Expansion Space at all Inserts and Electrical Penetrations
3. Concrete Floor Penetration
4. Solid Blocking at Insert