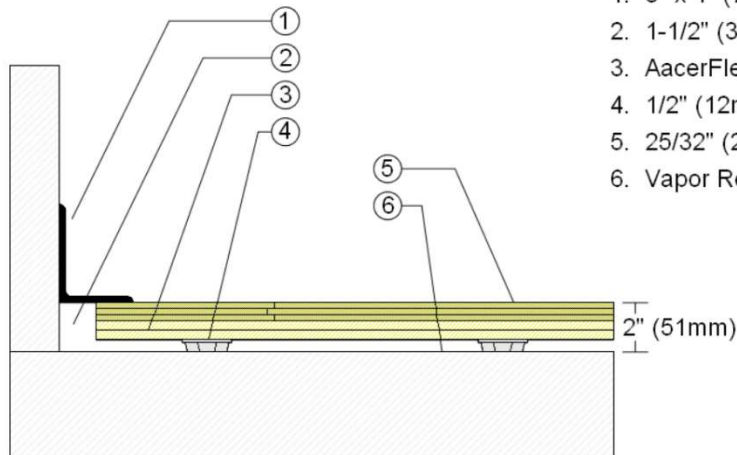
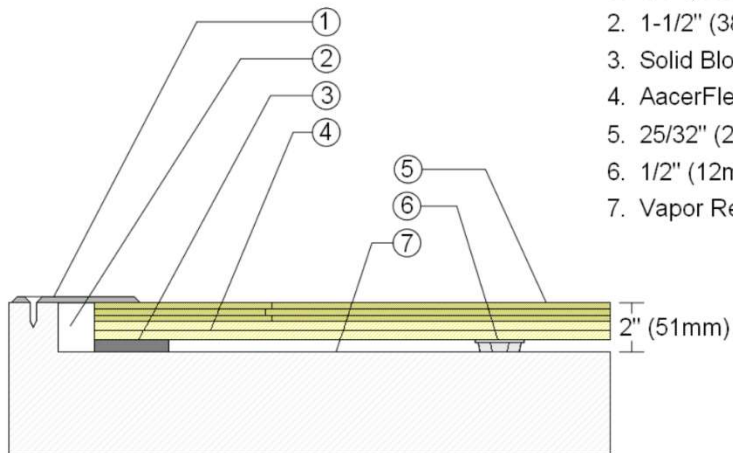


WALLBASE



1. 3" x 4" (76mm x 101mm) Vent Cove Base
2. 1-1/2" (38mm) min. Expansion Space
3. AcerFlex II Plywood Subfloor Panels
4. 1/2" (12mm) TriPower Pad
5. 25/32" (20mm) MFMA Maple Flooring
6. Vapor Retarder

THRESHOLD



1. 1/4" (6mm) Aluminum Threshold
2. 1-1/2" (38mm) min. Expansion Space
3. Solid Blocking at Doorway
4. AcerFlex II Plywood Subfloor Panels
5. 25/32" (20mm) MFMA Maple
6. 1/2" (12mm) TriPower Pad
7. Vapor Retarder

Description: AACERFLEX II TP

Resilience: 1/2" (12mm) TriPower pads

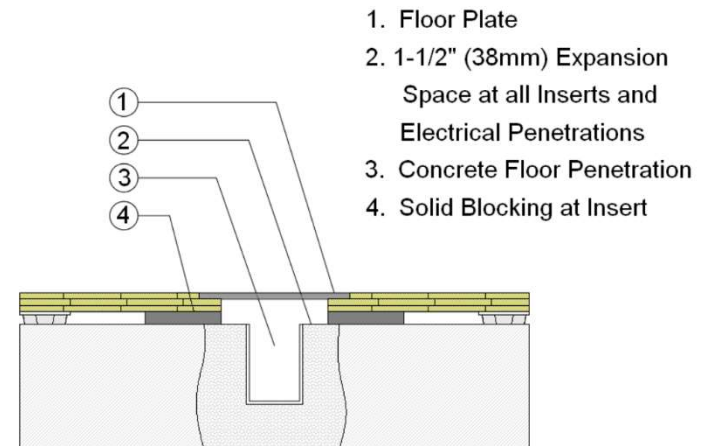
Drawn By: RR

Date: 12/6 /23

Revisions

ID	Description	By	Date

EQUIPMENT



1. Floor Plate
2. 1-1/2" (38mm) Expansion Space at all Inserts and Electrical Penetrations
3. Concrete Floor Penetration
4. Solid Blocking at Insert