

# ScissorLoc™ IV

FLOATING SYSTEM

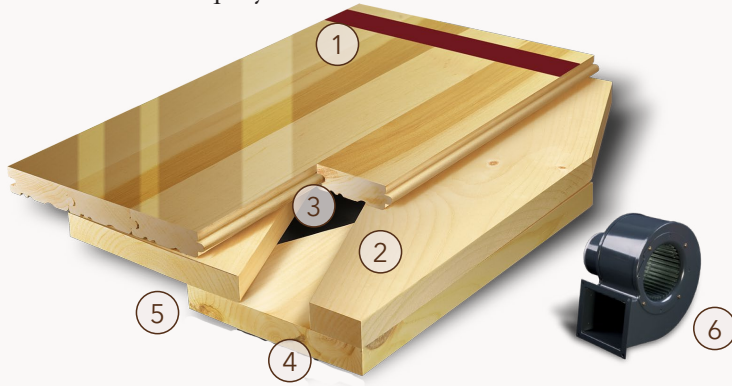


ScissorLoc IV provides intersecting solid wood subfloor layers supported by ECO resilient pads. Subfloor configuration, pad spacing and density, result in a floor shown to have met the most stringent performance standard for hardwood athletic floor systems.



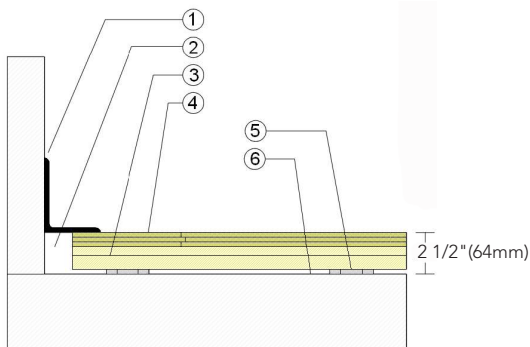
# ScissorLoc™ IV

Intersecting subfloor design of ScissorLoc IV provides premium airflow and uniform play.



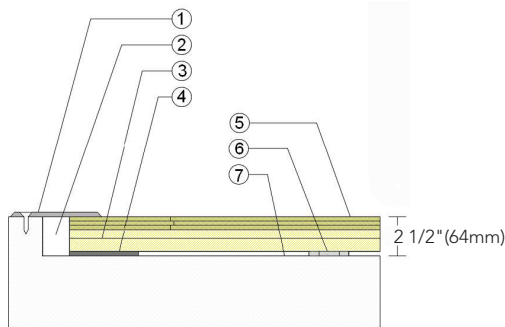
- |                                 |                                  |
|---------------------------------|----------------------------------|
| 1. Precision-milled Aacer Maple | 4. 1/2" (12mm) ECO Resilient Pad |
| 2. Dimensioned Pine Subfloor    | 5. Surface Vapor Retarder        |
| 3. Excellent Ventilating Design | 6. PowerVent Airflow System      |

## WALL BASE



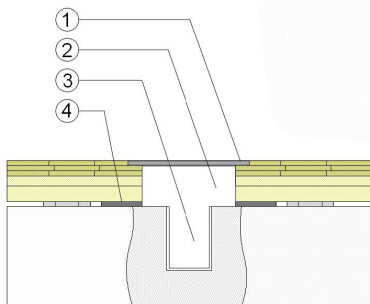
- 3" x 4" (76mm x 101mm) Vent Cove Base
- 1-1/2" (38mm) Min. Expansion Space
- 1/2" x 5-1/2" (12mm x 140mm) Upper Pine
- 25/32" (20mm) MFMA Maple Flooring
- 1/2" (12mm) ECO Resilient Pad
- Vapor Retarder

## THRESHOLD



- 1/4" (6mm) Aluminum Threshold
- 1-1/2" (38mm) Min. Expansion Space
- 1/2" x 5-1/2" (12mm x 140mm) Upper Pine; 3/4" x 5-1/2" (19mm x 140mm) Lower Pine
- Solid Blocking at Doorway
- 25/32" (20mm) MFMA Maple Flooring
- 1/2" (12mm) ECO Resilient Pad
- Vapor Retarder

## EQUIPMENT



- Floor Plate
- 1-1/2" (38mm) Min. Expansion Space at all Inserts & Electrical Penetrations
- Concrete Floor Penetration
- Solid Blocking at Insert

Certified



Green Status and LEED Contributors



- FSC® Certified Maple - MR
- FSC® Certified Subfloor Components - MR
- Environmental Quality - EQ
- Regional Materials - MR

Resilience

1/2" ECO Resilient Pad



Slab Depression

- 25/32" (20mm) flooring - 2 1/2" (64mm)

Optional ScissorLoc™ Systems

ScissorLoc™ I  
ScissorLoc™ II  
ScissorLoc™ III  
ScissorLoc™ LP

Optional Protection System

PowerVent™ Airflow System

Subfloor Construction

Intersecting Kiln-dried Solid Pine

System Type

Floating

Testing Laboratory Partners



It is the policy of Infinity Wood Floors to continuously improve its line of products. Therefore, Infinity Wood Floors reserves the right to change, modify or discontinue systems, specifications and accessories of all products at any time without notice or obligation to purchaser.



see us at  
Sweets.com



Jan 2024