

ScissorLoc™ II

FLOATING SYSTEM



ScissorLoc II is a dimensionally stable system with excellent natural ventilation capabilities due to its intersecting solid wood subfloor component design. ScissorLoc II is designed to withstand heavy loads while still providing a resilient and controlled playing surface.

Aacer's PowerVent™ Advanced airflow system is a popular accompaniment to this system.

It maintains balanced humidity above and below the floor as well as detects moisture to initiate mechanical airflow drying.



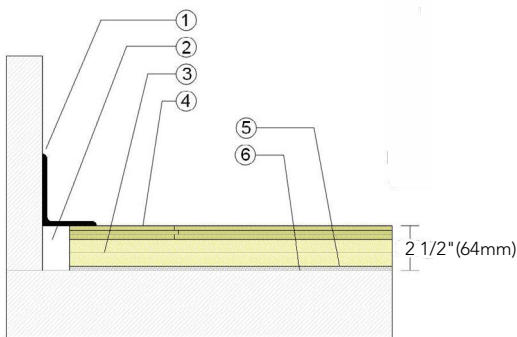
ScissorLoc™ II

ScissorLoc™ II provides an intersecting subfloor design for premium airflow and uniform play.



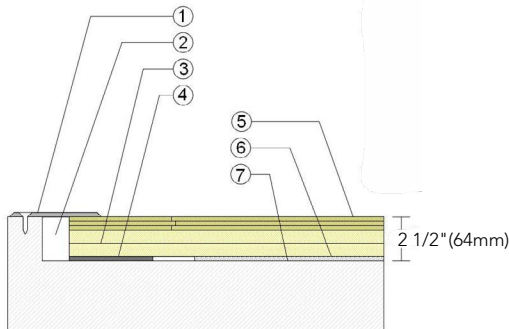
- | | |
|-----------------------------------|--------------------------------|
| 1. Infinity MFMA Maple | 4. 1/4" (6mm) Performance Foam |
| 2. Kiln-dried Pine Upper Subfloor | 5. Vapor Retarder |
| 3. Kiln-dried Pine Lower Subfloor | 6. PowerVent Airflow System |

WALL BASE



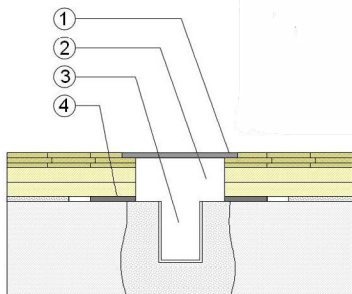
1. 3" x 4" (76mm x 101mm) Vent Cove Base
2. 1 1/2" (38mm) Min. Expansion Space
3. Upper Subfloor Spaced 2" (51mm) Apart
Lower Subfloor Spaced 6" (152mm) Apart
4. 25/32" (20mm) MFMA Maple Flooring
5. 1/4" (6mm) Resilient Foam Blanket
6. Vapor Retarder

THRESHOLD



1. 1/4" (6mm) Aluminum Threshold
2. 1 1/2" (38mm) Min. Expansion Space
3. Upper Subfloor Spaced 2" (51mm) Apart
Lower Subfloor Spaced 6" (152mm) Apart
4. Solid Blocking at Doorway
5. 25/32" (20mm) MFMA Maple Flooring 1/4" (6mm)
6. 1/4" (6mm) Resilient Foam Blanket
7. Vapor Retarder

EQUIPMENT



1. Floor Plate
2. 1 1/2" (38mm) Min. Expansion Space at all Inserts & Electrical Penetrations
3. Concrete Floor Penetration
4. Solid Blocking at Insert

Certified



Green Status
and LEED
Contributors



- FSC® Certified Maple - MR
- FSC® Certified Subfloor Components - MR
- Environmental Quality - EQ
- Regional Materials - MR

Resilience

1/4" Performance Foam
*Other pad options available.

Slab
Depression

- 25/32" (20mm) flooring
-2 1/2" (64mm)

Optional
ScissorLoc™
Systems

ScissorLoc™ I
ScissorLoc™ III
ScissorLoc™ LP

Optional
Protection
System

PowerVent™ Airflow
System

Subfloor
Construction

Intersecting Kiln-dried Solid
Pine

System Type

Floating

Testing
Laboratory
Partners



U.S. Patent #

#5,299,401

It is the policy of Infinity Wood Floors to continuously improve its line of products. Therefore, Infinity Wood Floors reserves the right to change, modify or discontinue systems, specifications and accessories of all products at any time without notice or obligation to purchaser.



see us at
Sweets.com



Jan2024