

Programme Dance IV

FLOATING SYSTEM

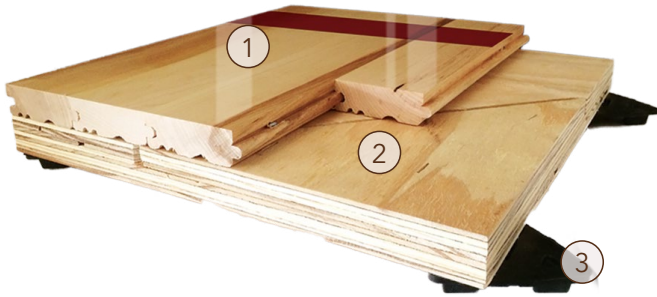


Programme Dance IV includes two full layers of subfloor sheathing resting on TriPower resilient pads offering the lowest optional durometer value for the highest shock absorption. TriPower pads are designed to engage added support when impacts exceed intended activity.



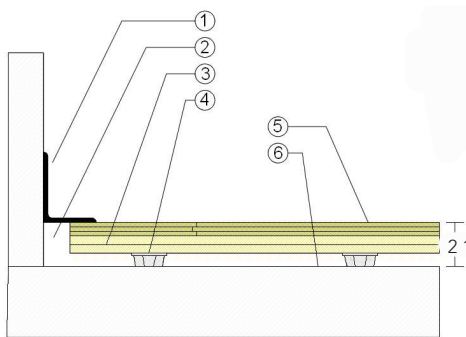
Programme Dance IV

Full subfloor panels resting on highly resilient TriPower pads to provide very high shock absorption under impacts.



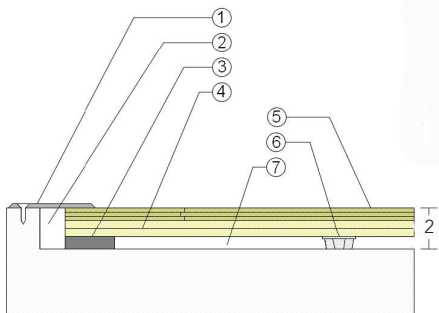
1. Precision-milled Aacer Maple
2. Programme Plywood Subfloor Panel
3. 3/4" (19mm) TriPower Pad

WALLBASE



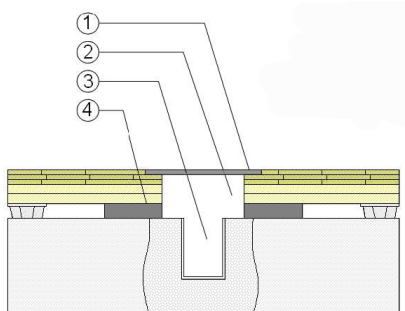
1. 3" x 4" (76mm x 101mm) Vent Cove Base
2. 1-1/2" (38mm) Min. Expansion Space
3. Programme Plywood Subfloor Panels
4. 3/4" (19mm) TriPower Pad
5. 25/32" (20mm) MFMA Maple Flooring
6. Vapor Retarder

THRESHOLD



1. 1/4" (6mm) Aluminum Threshold
2. 1-1/2" (38mm) Min. Expansion Space
3. Solid Blocking at Doorway
4. Programme Plywood Subfloor Panels
5. 25/32" (20mm) MFMA Maple Flooring
6. 3/4" (19mm) TriPower Pad
7. Vapor Retarder

EQUIPMENT



1. Floor Plate
2. 1-1/2" (38mm) Min. Expansion Space at all Inserts & Electrical Penetrations
3. Concrete Floor Penetration
4. Solid Blocking at Insert

Green Status
and LEED
Contributors



- FSC® Certified Maple - MR
- FSC® Certified Subfloor Components - MR
- Environmental Quality - EQ
- Regional Materials - MR

Resilience

3/4 (19mm) TriPower Pad

Slab
Depression

- 25/32" (20mm) flooring - 2 1/2" (64mm)

Optional
Programme
Dance Systems

Programme Dance I
Programme Dance II
Programme Dance III

Subfloor
Construction

Plywood Panels

System Type

Floating

Testing
Laboratory
Partners



It is the policy of Infinity Wood Floors to continuously improve its line of products. Therefore, Infinity Wood Floors reserves the right to change, modify or discontinue systems, specifications and accessories of all products at any time without notice or obligation to purchaser.