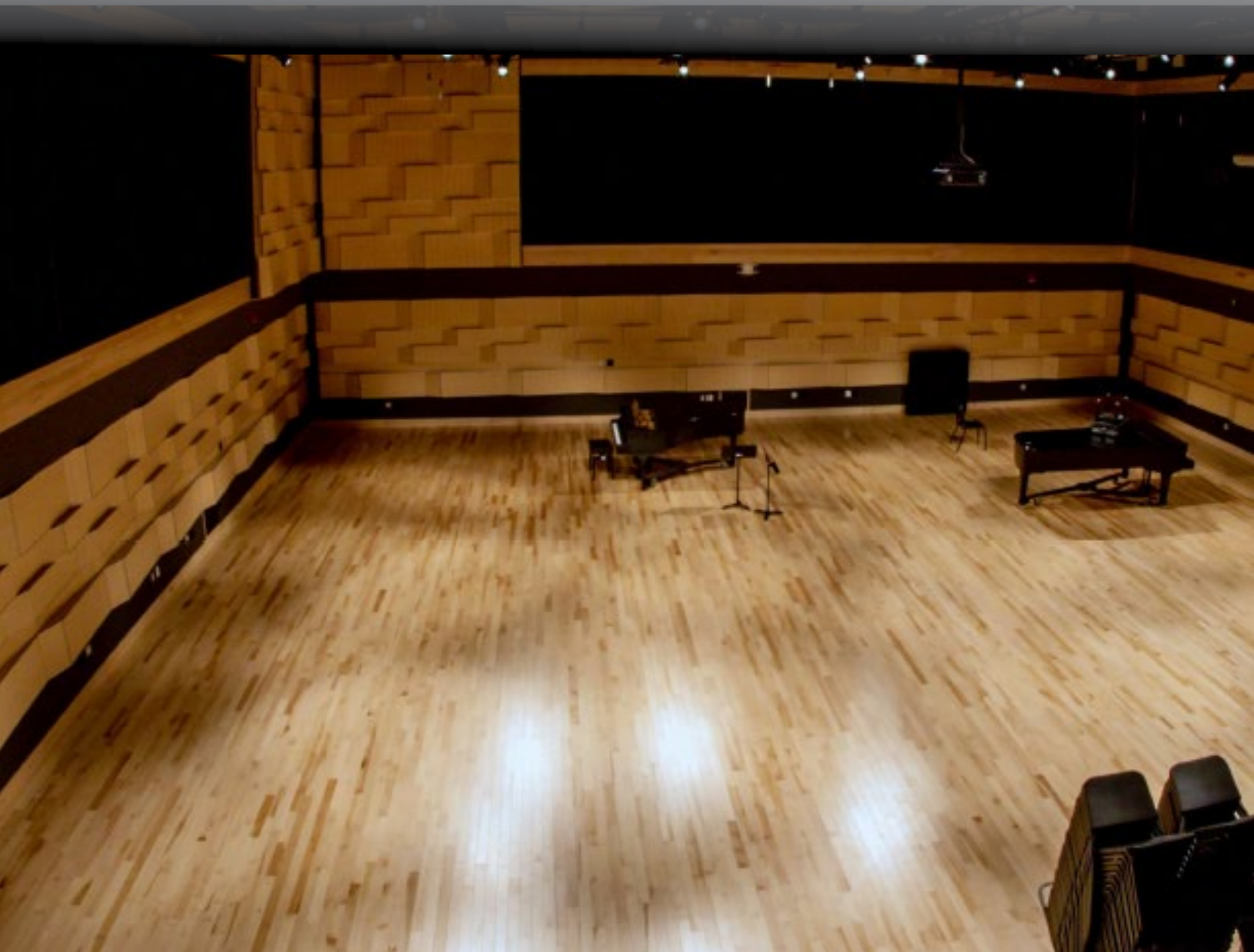


# Programme I Stage

FIXED RESILIENT SYSTEM

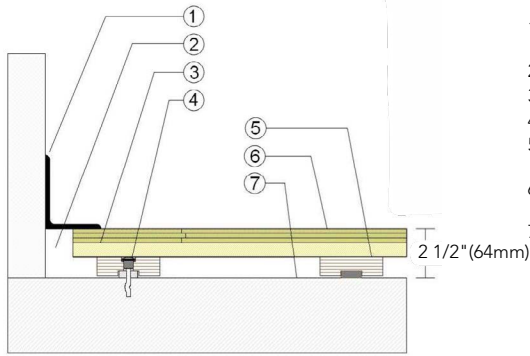


An excellent choice for responding to activities, impacts and loads applied under a wide range of stage floor usage. Programme I Stage includes ECO resilient pads manufactured from recycled rubber material. Special machined sleepers include recessed pad housing to limit pressure on elastic material as well as on subfloor components when impacted by heavy loads.



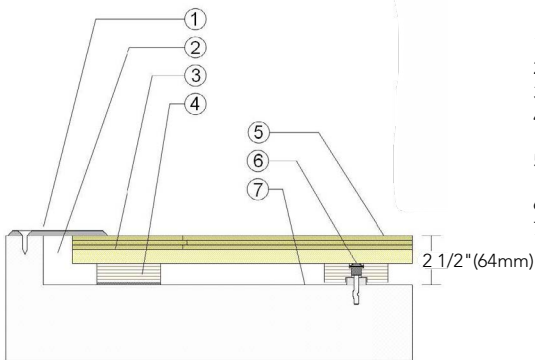
# Programme I Stage

## WALLBASE Maple Floor Surface



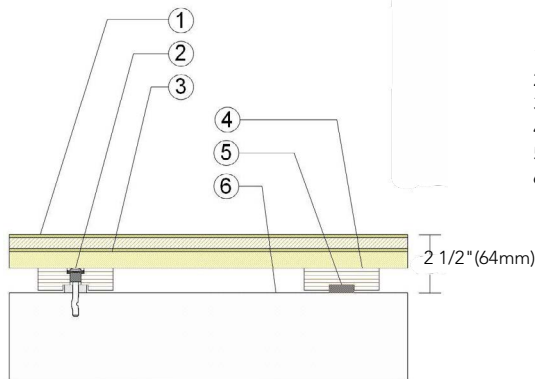
1. 3" x 4" (76mm x 101mm) Vent Cove Base
2. 1-1/2" (38mm) Min. Expansion Space
3. 23/32" (19mm) Plywood Subfloor
4. Steel Concrete Anchor and Bushing
5. Engineered Plywood Sleeper with recessed 1/2" (12mm) ECO Pad
6. 25/32" (20mm) MFMA Maple Flooring
7. Vapor Retarder

## THRESHOLD Maple Floor Surface



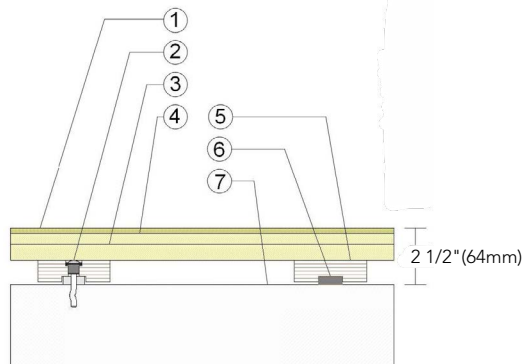
1. 1/4" (6mm) Aluminum Threshold
2. 1-1/2" (38mm) Min. Expansion Space
3. 23/32" (19mm) Plywood Subfloor
4. Engineered Plywood Sleeper with Solid Blocking Attached
5. 25/32" (20mm) MFMA Maple Flooring
6. Steel Concrete Anchor and Bushing
7. Vapor Retarder

## HARDBOARD Panel Floor Surface



1. Hardboard Faced Laminate Panel
2. Steel Concrete Anchor and Bushing
3. 23/32" (19mm) Plywood Subfloor
4. Engineered Plywood Sleeper
5. Recessed ECO Resilient Pad
6. Vapor Retarder

## HARDBOARD Layer Floor Surface



1. 1/4" (6mm) Hardboard Surface Layer
2. Steel Concrete Anchor and Bushing
3. 23/32" (19mm) Plywood Subfloor
4. 15/32" (12mm) Added Plywood Layer
5. Engineered Plywood Sleeper
6. Recessed ECO Resilient Pad
7. Vapor Retarder

### Anchorage

### Green Status and LEED Contributors

### Drill and Pin



- FSC® Certified Maple - MR
- FSC® Certified Subfloor Components - MR
- Environmental Quality - EQ
- Regional Materials - MR

### Resilience

1/2" (12mm) ECO Pad

### Slab Depression

- 25/32" (20mm) Flooring - 2-1/2" (64mm)

### Optional Programme Systems

Programme II Stage  
Programme III Stage

### Optional Protection System

PowerVent™ Advanced Airflow System

### Subfloor Construction

Engineered sleepers and subfloor

### System Type

Fixed Resilient

### Testing Laboratory Partners



It is the policy of Infinity Wood Floors to continuously improve its line of products. Therefore, Infinity Wood Floors reserves the right to change, modify or discontinue systems, specifications and accessories of all products at any time without notice or obligation to purchaser.