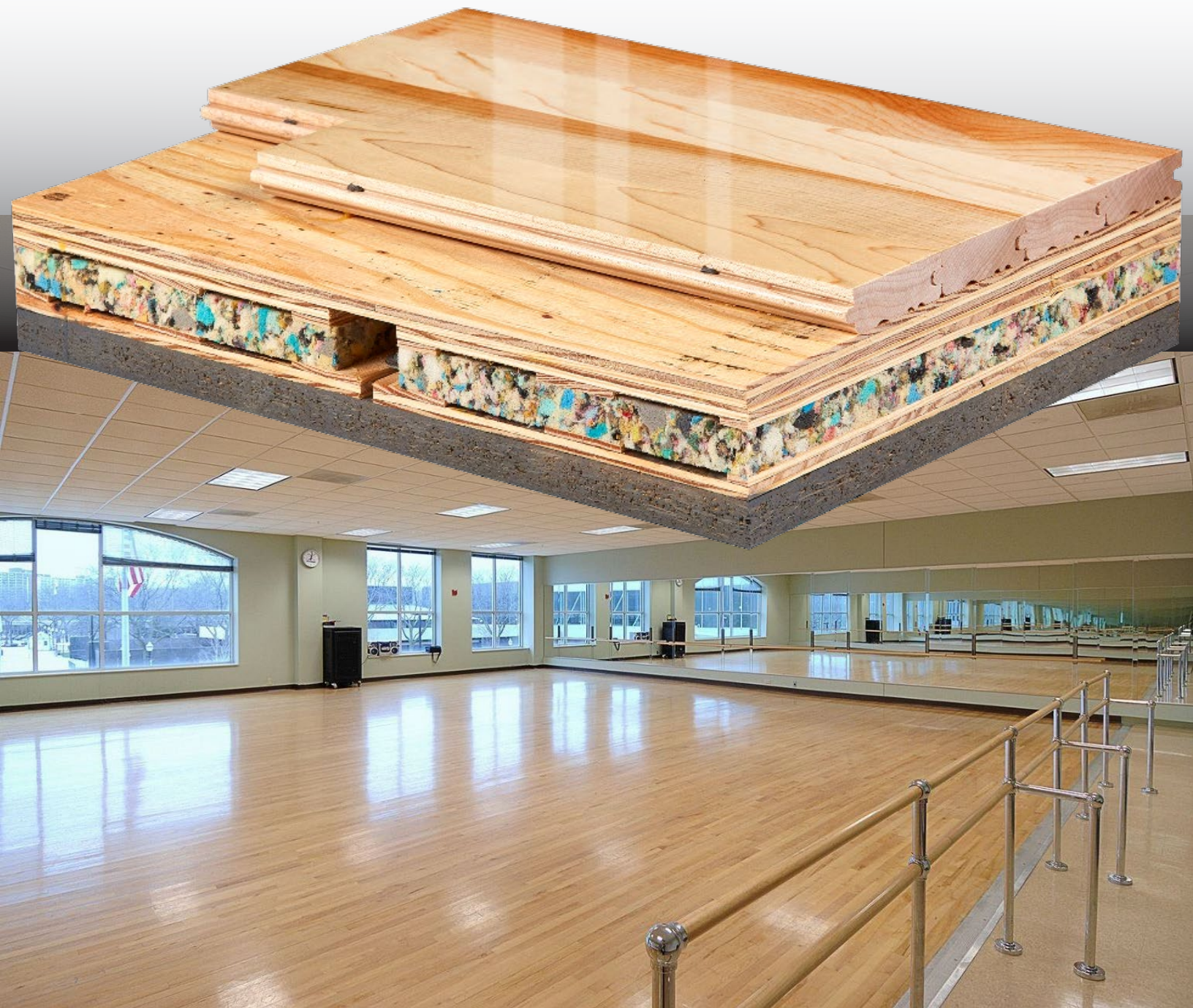


# Programme Dance I

FIXED RESILIENT SYSTEM



Programme Dance panels provide a unique manner to engage high-density resilient cushioning at pressure points in alignment from above and below. Thereby creating quick reacting shock absorption whether lightly impacting the floor or under aggressive landing movement.



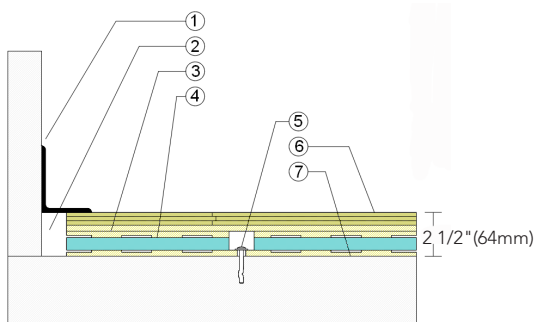
# Programme Dance I

Programme Dance I provides high shock absorption and uniformity, along with the vibration damping affect of blanket cushion resiliency.



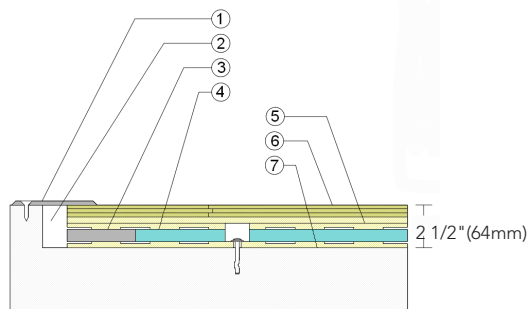
- |   |  |
|---|--|
| 1. Precision-milled Aacer Maple             | 4. Resilient Programme Dance I Cushion |
| 2. Programme Dance I Plate Anchored to Slab | 5. Vapor Retarder                      |
| 3. Pre-manufactured Programme Dance         | 6. Concrete Substrate                  |

## WALLBASE



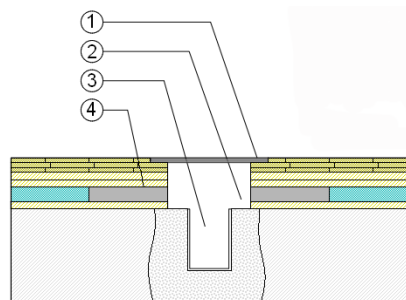
- 3" x 4" (76mm x 101mm) Vent Cove Base
- 1-1/2" (38mm) Min. Expansion Space
- Programme Dance I Subfloor Panel
- Programme Dance I Resilient Cushion
- Concrete Anchor Pin Assembly
- 25/32" (20mm) MFMA Maple Flooring
- Vapor Retarder

## THRESHOLD



- 1/4" (6mm) Aluminum Threshold
- 1-1/2" (38mm) Min. Expansion Space
- Solid Blocking at Doorway
- Programme Dance I Resilient Cushion
- Programme Dance I Subfloor Cushion
- 25/32" (20mm) MFMA Maple Flooring
- Vapor Retarder

## EQUIPMENT



- Floor Plate
- 1-1/2" (38mm) Min. Expansion Space at all Inserts & Electrical Penetrations
- Concrete Floor Penetration
- Solid Blocking at Insert

Certification



Anchorage

Steel Drive Pin / Lateral Movement Allowed

Green Status and LEED Contributors



- FSC® Certified Maple - MR
- FSC® Certified Subfloor Components - MR
- Environmental Quality - EQ
- Regional Materials - MR

Resilience

3/4" (19mm) Blanket Cushion

Slab Depression

- 25/32" (20mm) flooring - 2 1/2" (64mm)

Optional Programme Dance Systems

Programme Dance II  
Programme Dance III  
Programme Dance IV

Subfloor Construction

Pre-manufactured Panels

System Type

Fixed Resilient

Testing Laboratory Partners



It is the policy of Infinity Wood Floors to continuously improve its line of products. Therefore, Infinity Wood Floors reserves the right to change, modify or discontinue systems, specifications and accessories of all products at any time without notice or obligation to purchaser.



see us at  
**Sweets.com**

