

PowerPlay™ Cradle

FIXED RESILIENT SYSTEM



Prefabricated PowerPlay™ Cradles are assembled with recessed resilient pad housing to limit pressure when applying heavy non-athletic impacts. Aacer's cradle floor system provides desired shock absorption and ball response. Air-flow pockets directly below the floor surface and concrete anchorage provides added stability and uniformity.



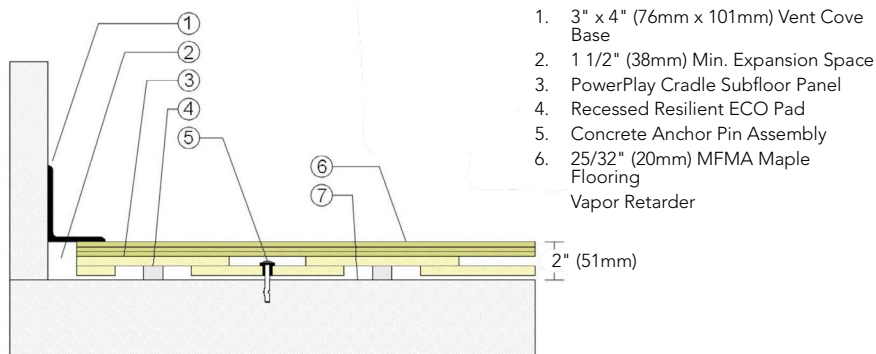
PowerPlay™ Cradle

PowerPlay™ Cradle provides desired resiliency and basketball rebound, protective recessed pad housing, beneficial airflow, and stabilizing concrete anchorage.

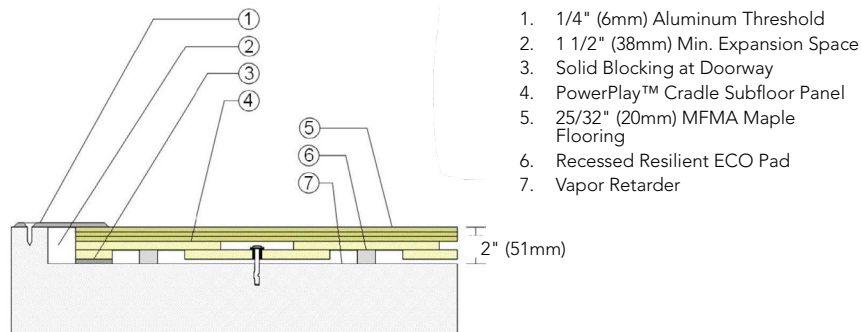


1. Infinity MFMA Maple
2. Heavy-Duty Concrete Fastener
3. Pre-assembled Panels
4. Recessed ECO Resilient Pad
5. Vapor Retarder
6. Concrete Substrate

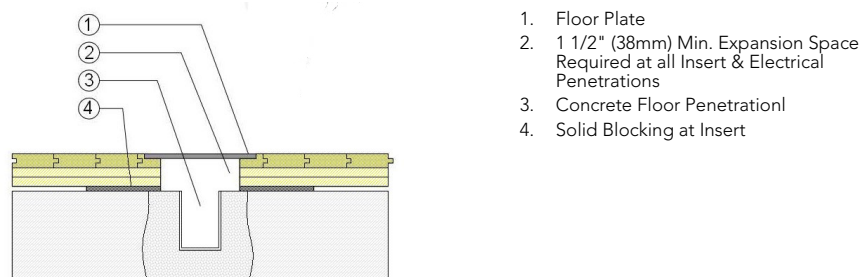
WALL BASE



THRESHOLD



EQUIPMENT



Certified



Anchorage

Collared Steel Drive Pin

Green Status
and LEED
Contributors



- FSC® Certified Maple - MR
- FSC® Certified Subfloor Components - MR
- Environmental Quality - EQ
- Regional Materials - MR

Resilience

3/4" (19mm) ECO Pad

Slab
Depression

- 25/32" (20mm) Flooring - 2" (51mm)

Optional
PowerPlay™ TP
PowerPlay™ Panel
PowerPlay™ Edge
PowerPlay™ Trax

PowerPlay™ TP
PowerPlay™ Panel
PowerPlay™ Edge
PowerPlay™ Trax

Subfloor
Construction

Pre-assembled panels

System Type

Fixed Resilient

Testing
Laboratory
Partners



It is the policy of Infinity Wood Floors to continuously improve its line of products. Therefore, Infinity Wood Floors reserves the right to change, modify or discontinue systems, specifications and accessories of all products at any time without notice or obligation to purchaser.



see us at
Sweets.com



an2024