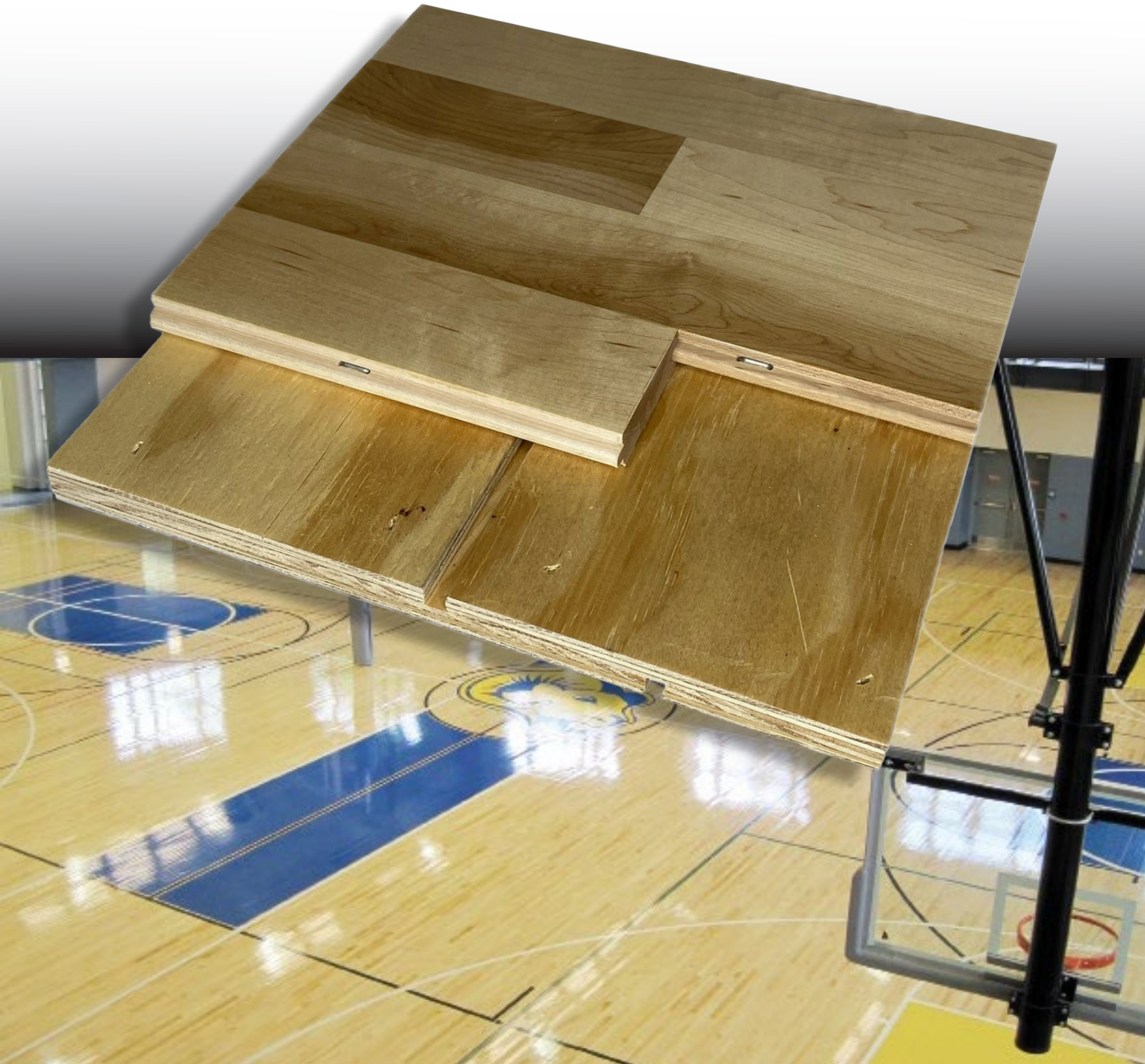


# AacerFlex™ II TP

RESILIENT FLOATING SYSTEM



AacerFlex II TP pre-assembled subfloor panels including highly resilient TriPower pads offering a hardwood sports floor having been tested and shown to have met the most stringent athletic floor performance standard.



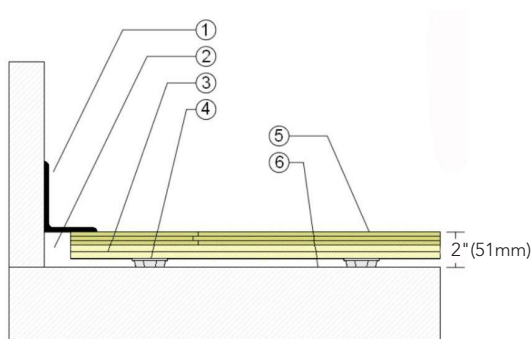
# AacerFlex™ II TP

Pre-assembled subfloor panels with resilient TriPower pads offering high shock absorbance and ball rebound uniformity.



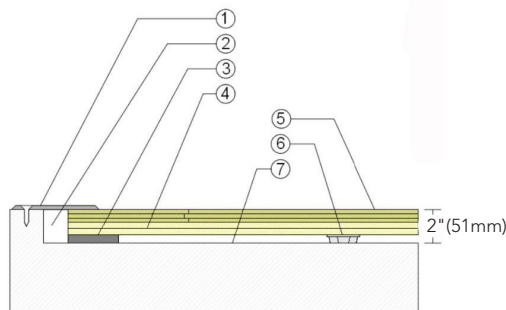
1. Precision-milled Aacer Maple
2. AacerFlex II Plywood Subfloor Panels
3. 1/2" (12mm) TriPower Pad
4. Vapor Retarder

## WALLBASE



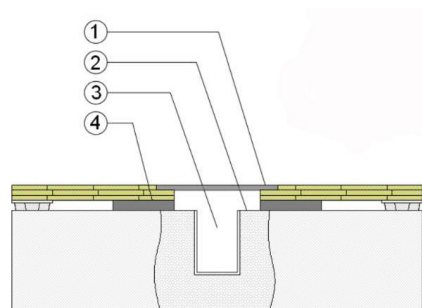
1. 3" x 4" (76mm x 101mm) Vent Cove Base
2. 1-1/2" (38mm) Min. Expansion Space
3. AacerFlex II Plywood Subfloor Panels
4. 1/2" (12mm) TriPower Pad Resilient Blanket Section
5. 25/32" (20mm) MFMA Maple Flooring
6. Vapor Retarder

## THRESHOLD



1. 1/4" (6mm) Aluminum Threshold
2. 1-1/2" (38mm) Min. Expansion Space
3. Solid Blocking at Doorway
4. AacerFlex II Plywood Subfloor Panels
5. 25/32" (20mm) MFMA Maple Flooring
6. 1/2" (12mm) TriPower Pad
7. Vapor Retarder

## EQUIPMENT



1. Floor Plate
2. 1-1/2" (38mm) Min. Expansion Space at all Inserts & Electrical Penetrations
3. Concrete Floor Penetration
4. Solid Blocking at Insert

## Certification



## Green Status and LEED Contributors



- FSC® Certified Maple - MR
- FSC® Certified Subfloor Components - MR
- Environmental Quality - EQ
- Regional Materials - MR

## Resilience

1/2" (12mm) TriPower Pad

## Slab Depression

- 25/32" (20mm) flooring - 2" (51mm)

## Optional AacerFlex II Systems

AacerFlex II CB

## Subfloor Construction

Pre-manufactured Panels

## System Type

Resilient Floating

## Testing Laboratory Partners



It is the policy of Infinity Wood Floors to continuously improve its line of products. Therefore, Infinity Wood Floors reserves the right to change, modify or discontinue systems, specifications and accessories of all products at any time without notice or obligation to purchaser.



see us at  
**Sweets.com**

