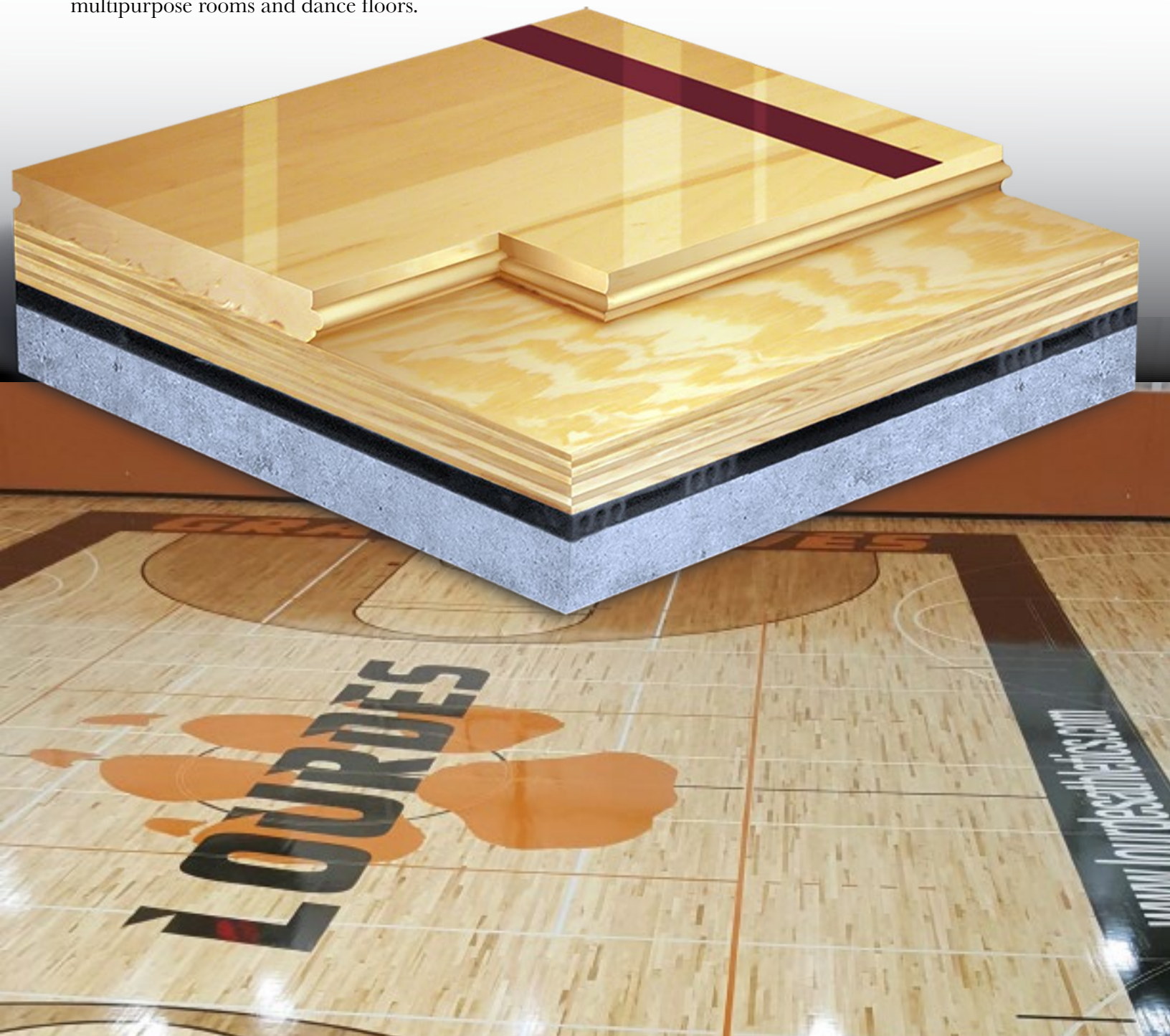


AacerCush II

FLOATING SYSTEM

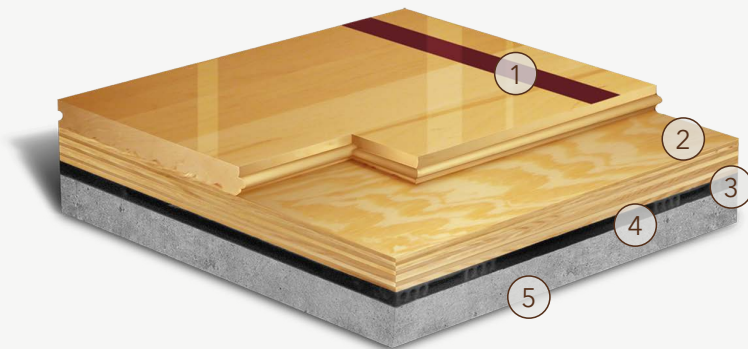


The AacerCush II floor system combines Aacer maple flooring with 2 layers of APA underlayment and resilient pads. The result is an economic, versatile athletic floor with increased shock absorbency and energy return that helps reduce injuries. This widely used floating sport floor system is chosen for field houses, gymnasiums, multipurpose rooms and dance floors.



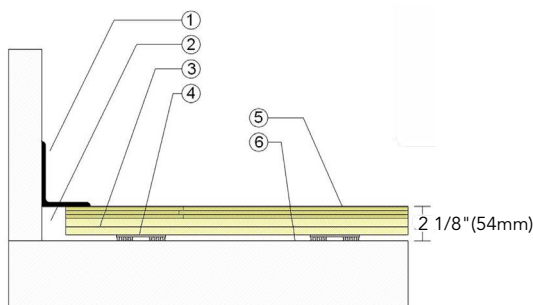
AacerCush II

Increased structural integrity, shock absorbency and energy return make AacerCush II an athletic flooring system selected for field houses, combination synthetic and wood facilities, gymnasiums, dance floors, stages and multipurpose rooms.



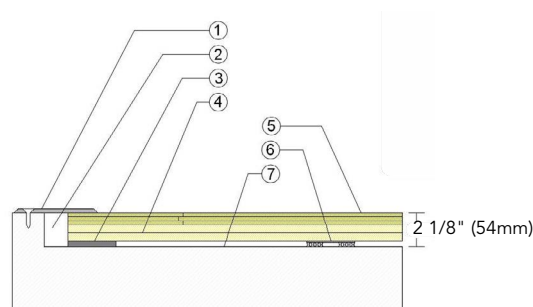
1. Infinity MFMA Maple
2. Two layers of 15/32" (12mm) Exposure 1, APA Rated Sheathing
3. 3/8" (10mm) AacerCush Resilient Pad
4. Vapor Retarder
5. Concrete

WALL BASE



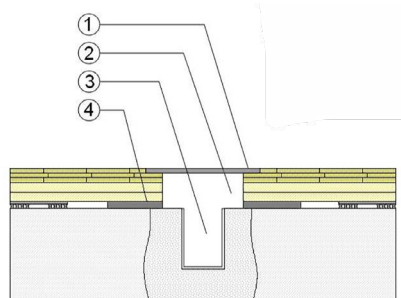
1. 3" x 4" (76mm x 101mm) Vent Cove Base
2. 1-1/2" (38mm) Min. Expansion Space
3. AacerCush Plywood Subfloor Panels
4. 3/8" (10mm) AacerCush Pad
5. 25/32" (20mm) MFMA Maple Flooring
6. Vapor Retarder

THRESHOLD



1. 1/4" (6mm) Aluminum Threshold
2. 1-1/2" (38mm) Min. Expansion Space
3. Solid Blocking at Doorway
4. AacerCush Plywood Subfloor Panels
5. 25/32" (20mm) MFMA Maple Flooring
6. 3/8" (10mm) AacerCush Pad
7. Vapor Retarder

EQUIPMENT



1. Floor Plate
2. 1-1/2" (38mm) Expansion Space at all Insert & Electrical Penetrations
3. Concrete Floor Penetration
4. Solid Blocking at Insert

Green Status
and LEED
Contributors



- FSC® Certified Maple - MR
- FSC® Certified Subfloor Components - MR
- Environmental Quality - EQ
- Regional Materials - MR

Resilience

3/8" (10mm) AacerCush Pads
**Other pad options available*

Slab
Depression

- 25/32" (20mm) flooring
-2 1/8" (54mm)

Optional
AacerCush
Systems

AacerCush I
AacerCush I+
Anchored AacerCush I
Anchored AacerCush I+

Subfloor
Construction

Plywood

System Type

Floating

Testing
Laboratory
Partners



It is the policy of Infinity Wood Floors to continuously improve its line of products. Therefore, Infinity Wood Floors reserves the right to change, modify or discontinue systems, specifications and accessories of all products at any time without notice or obligation to purchaser.



see us at
Sweets.com



Jan 2024