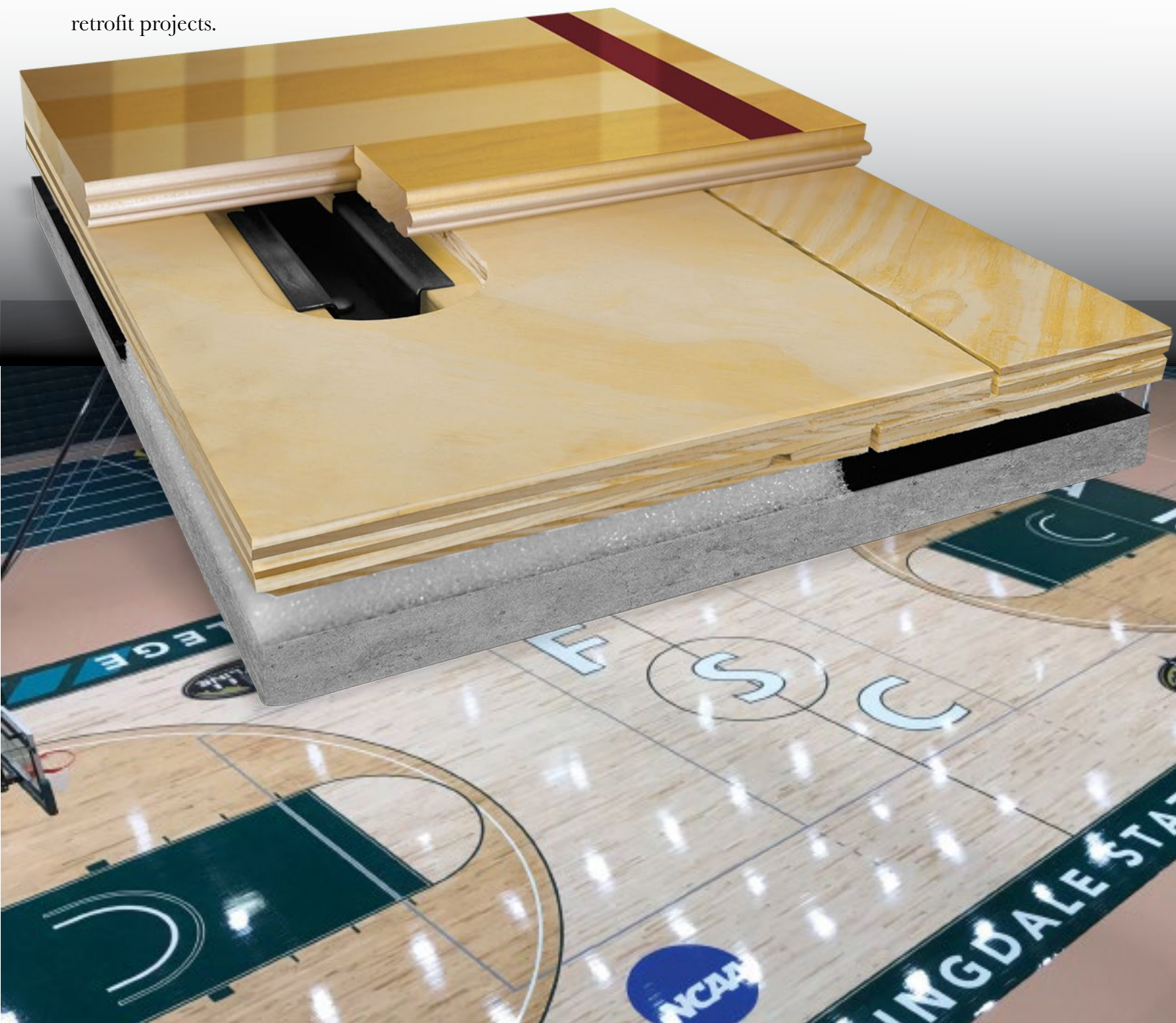


AacerChannel™ VLP HC

FIXED RESILIENT SYSTEM

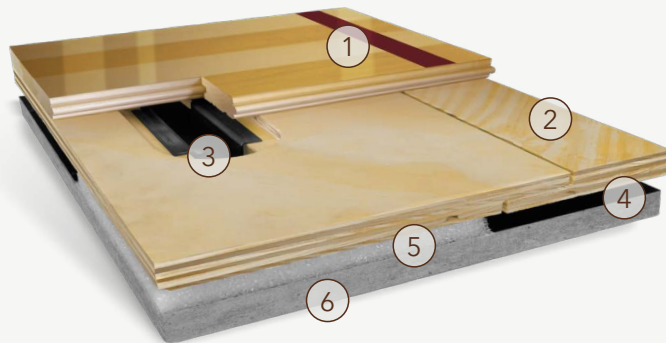


The AacerChannel™ VLP HC performance floor system provides the resiliency and safety of a floating floor and the stability of an anchored system. Factory assembled panels utilize Aacer heavy-duty sectional steel channels to provide fast installation and uniform performance. AacerChannel™ VLP HC is a MFMA-PUR compliant performance floor that offers a low profile which can also be considered if satisfying certain heights in retrofit projects.



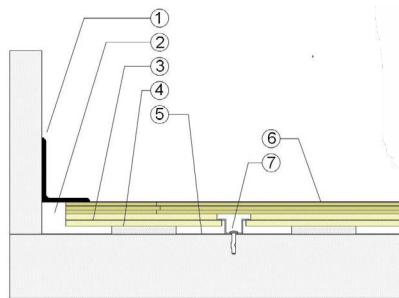
AacerChannel™ VLP HC

AacerChannel™ VLP HC is a fixed resilient sports performance floor system that features a monolithic subfloor with full flex and a full-thickness APA engineered underlayment to maximize system performance. The result is a MFMA PUR compliant floor with increased stability, shock absorbency, energy return and low vibration.



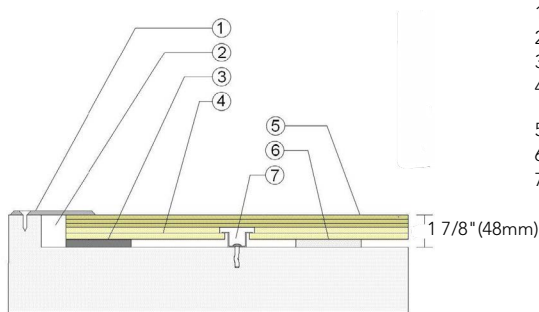
- | | |
|---|---------------------|
| 1. Infinity MFMA Maple | 4. Vapor Retarder |
| 2. Integrated Panels form a Monolithic Subfloor | 5. Performance Foam |
| 3. Sectional Steel Channel | 6. Concrete |

WALL BASE



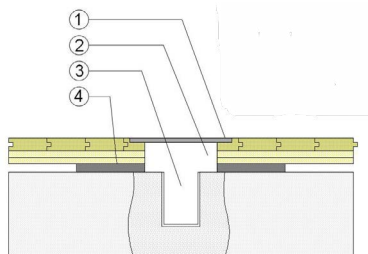
- 3" x 4" (76mm x 101mm) Vent Cove Base
- 1 1/2" (38mm) Min. Expansion Space
- AacerChannel VLP HC Subfloor
- Resilient Foam Section
- Vapor Retarder
- 25/32" (20mm) MFMA Maple Flooring
- Steel Channel and Concrete Anchor

THRESHOLD



- 1/4" (6mm) Aluminum Threshold
- 1 1/2" (38mm) Min. Expansion Space
- Solid Blocking at Doorway
- AacerChannel™ VLP HC Subfloor Panel
- 25/32" (20mm) MFMA Maple Flooring
- Resilient Foam Section
- Steel Channel and Concrete Anchor

EQUIPMENT



- Floor Plate
- 1 1/2" (38mm) Min. Expansion Space Required at all Insert & Electrical Penetrations
- Concrete Floor Penetration
- Solid Blocking at Insert

Anchorage

Certified



Green Status and LEED Contributors



- FSC® Certified Maple - MR
- FSC® Certified Subfloor Components - MR
- Environmental Quality - EQ
- Regional Materials - MR

Resilience

1/2" (12mm) Performance Foam

*Other pad options available.

Slab Depression

- 25/32" (20mm) flooring
- 1 7/8" (48mm)

Optional AacerChannel™ Systems

AacerChannel VLP

Subfloor Construction

Pre-manufactured panels

System Type

Fixed Resilient

Testing Laboratory Partners



It is the policy of Infinity Wood Floors to continuously improve its line of products. Therefore, Infinity Wood Floors reserves the right to change, modify or discontinue systems, specifications and accessories of all products at any time without notice or obligation to purchaser.



see us at
Sweets.com



Jan 2024