



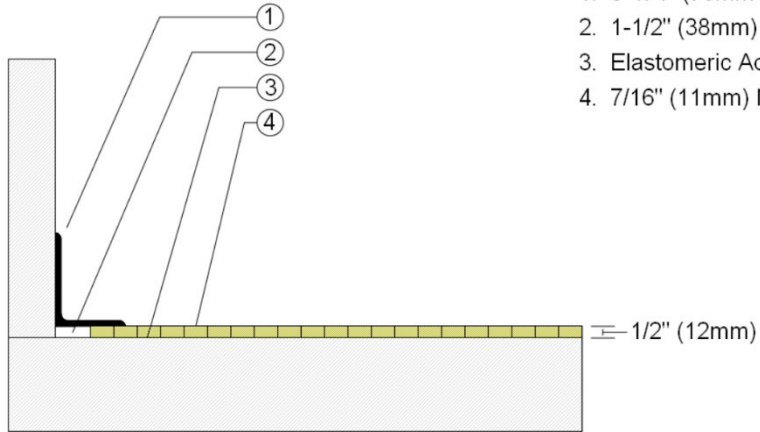
**Description:** SUPERBOND

**Resilience:**

**Drawn By:** RR **Date:** 1/1/2025

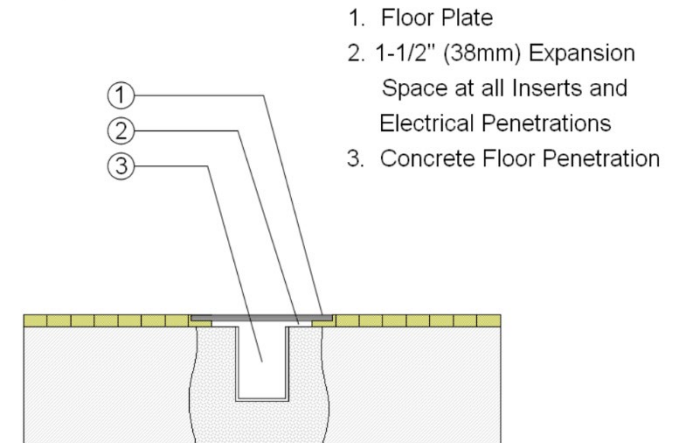
Revisions			
ID	Description	By	Date

### WALLBASE



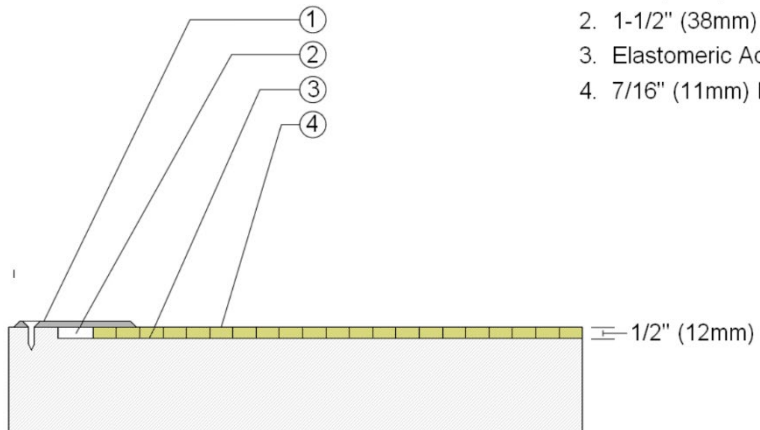
1. 3" x 4" (76mm x 101mm) Vent Cove Base
2. 1-1/2" (38mm) min. Expansion Space
3. Elastomeric Adhesive
4. 7/16" (11mm) Maple Flooring

### EQUIPMENT



1. Floor Plate
2. 1-1/2" (38mm) Expansion Space at all Inserts and Electrical Penetrations
3. Concrete Floor Penetration

### THRESHOLD



1. 1/4" (6mm) Aluminum Threshold
2. 1-1/2" (38mm) min. Expansion Space
3. Elastomeric Adhesive
4. 7/16" (11mm) Maple Flooring