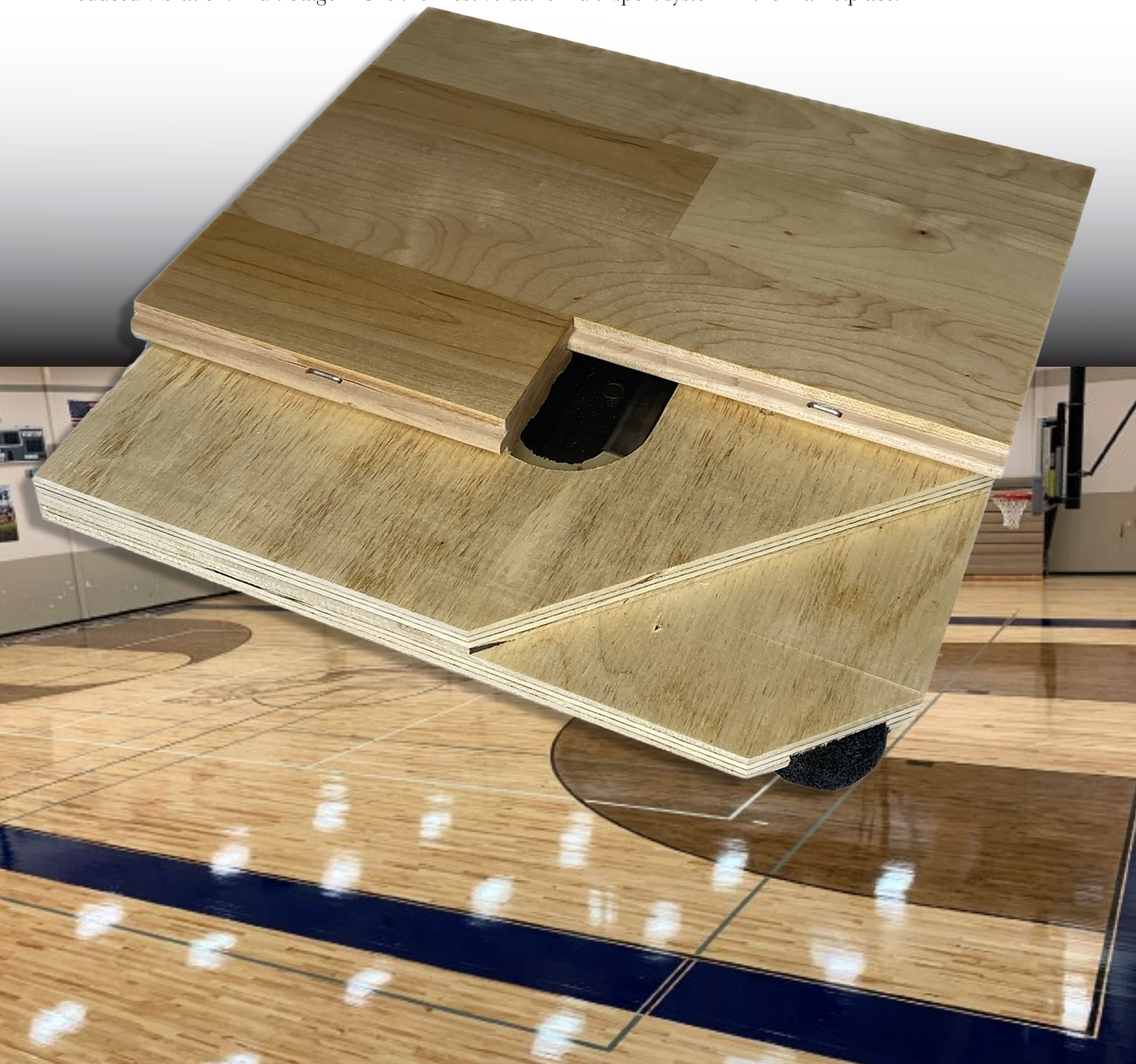


MultiStage HC

FIXED RESILIENT SYSTEM



MultiStage HC is a computer design dual stage fixed resilient system that offers high performance with stability reduced vibration. MultiStage HC is the most versatile multi-sport system in the marketplace.



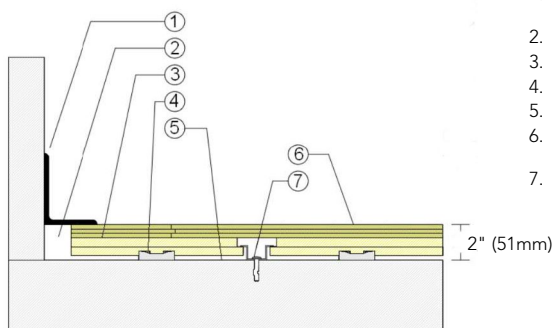
MultiStage HC

MultiStage HC is a computer designed dual stage fixed resilient system that offers high performance with dimensional stability and reduced vibration. It is a good selection for new and retrofit sports floor applications.



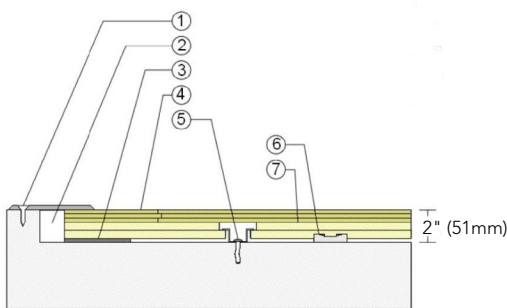
- | | |
|--------------------------------------|----------------------------------|
| 1. Aacer MFMA Maple | 4. Vapor Retarder |
| 2. Engineered MultiStage Subfloor | 5. 1/2" (12mm) ECO Resilient Pad |
| 3. Steel Channel and Concrete Anchor | |

WALL BASE



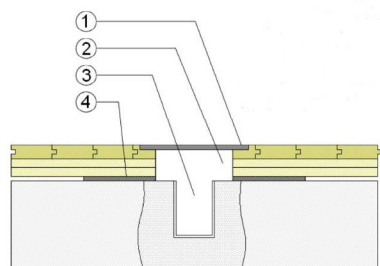
- 3" x 4" (76mm x 101mm) Vent Cove Base
- 1 1/2" (38mm) Min. Expansion Space
- Engineered MultiStage Subfloor
- 1/2" (12mm) ECO Resilient Pad
- Vapor Retarder
- 25/32" (20mm) MFMA Maple Flooring
- Steel Channel and Concrete Anchor

THRESHOLD









- 1/4" (6mm) Aluminum Threshold
- 1 1/2" (38mm) Min. Expansion Space
- Solid Blocking at Doorway
- 25/32" (20mm) MFMA Maple Flooring
- Steel Channel and Concrete Anchor
- 1/2" (12mm) ECO Resilient Pad
- Engineered MultiStage Subfloor

EQUIPMENT



- Floor Plate
- 1 1/2" (38mm) Min. Expansion Space Required at all Insert & Electrical Penetrations
- Concrete Floor Penetration
- Solid Blocking at Floor Insert

Anchorage	Sectional Channel
Certification	
Green Status and LEED Contributors	  <ul style="list-style-type: none"> • FSC® Certified Maple - MR • FSC® Certified Subfloor Components - MR • Environmental Quality - EQ • Regional Materials - MR
Resilience	1/2" (12mm) ECO Resilient Pad
Slab Depression	• 25/32" (20mm) flooring – 2" (51mm)
Optional MultiStage Systems	MultiStage (floating option)
Subfloor Construction	Pre-manufactured panels
System Type	Fixed Resilient
Testing Partners	  

It is the policy of Infinity Wood Floors to continuously improve its line of products. Therefore, Infinity Wood Floors reserves the right to change, modify or discontinue systems, specifications and accessories of all products at any time without notice or obligation to purchaser.