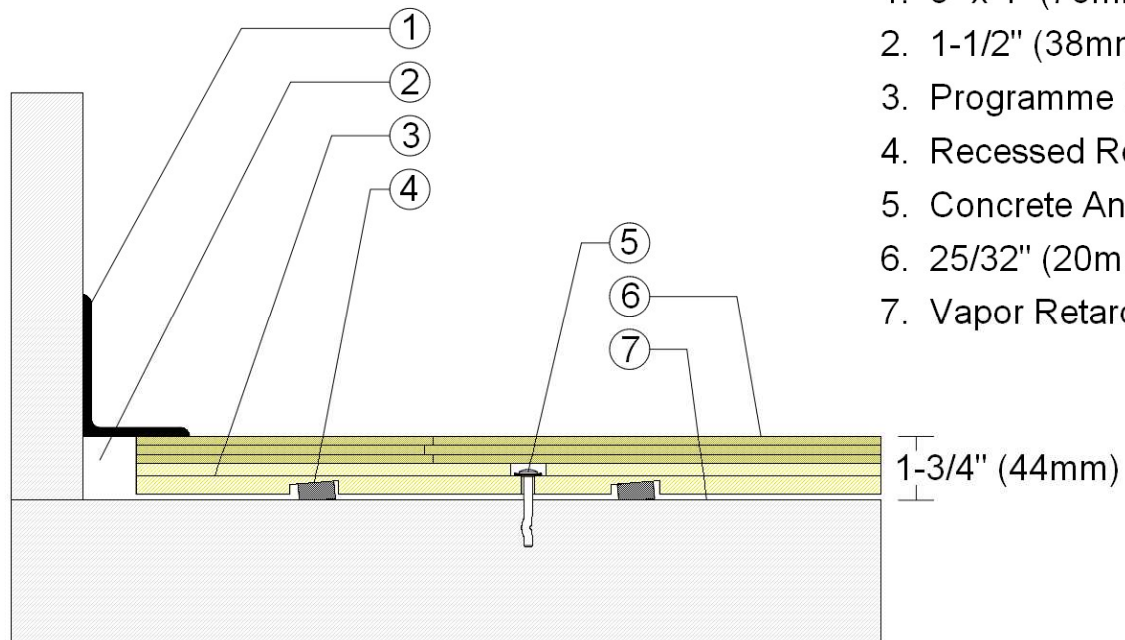


Revision	Description	Drawn By / Date
A	Programme III Stage – Maple Floor Surface	RR / 1-1-23

PROGRAMME III Stage Floor F1 Maple Floor Surface Option

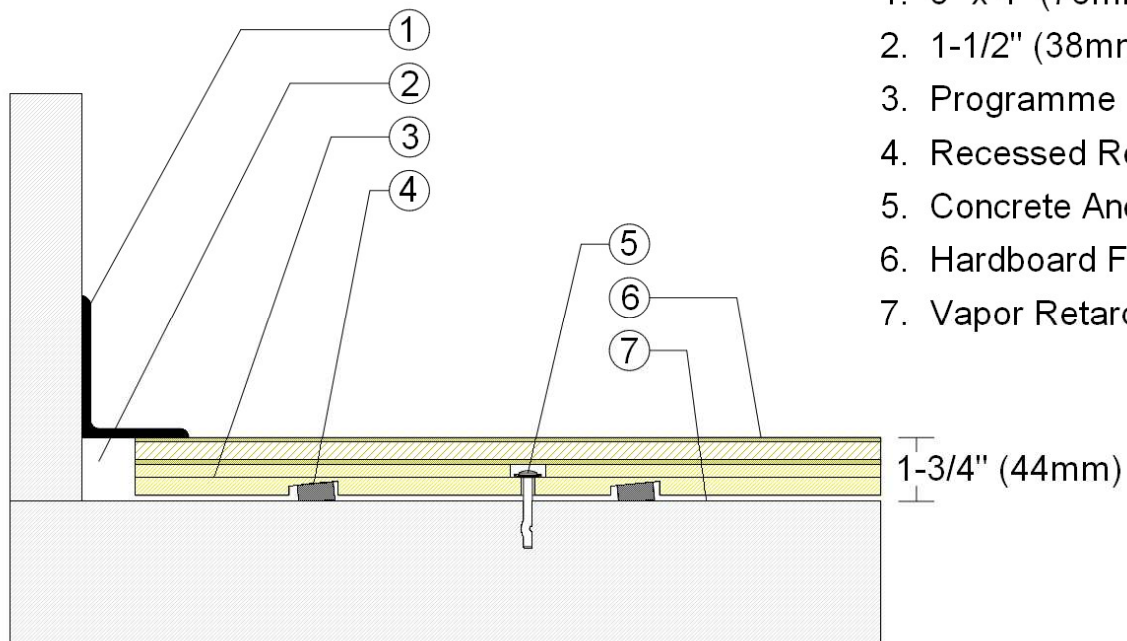


1. 3" x 4" (76mm x 101mm) Vent Cove Base
2. 1-1/2" (38mm) min. Expansion Space
3. Programme III Subfloor Panel
4. Recessed Resilient ECO Pad
5. Concrete Anchor Pin Assembly
6. 25/32" (20mm) MFMA Maple Flooring
7. Vapor Retarder

Revision	Description	Drawn By / Date
A	Programme III Stage – Hardboard Faced Laminate Surface	RR / 1-1-23

PROGRAMME III Stage Floor

F2 Hardboard Faced Laminate Panel Surface Option



1. 3" x 4" (76mm x 101mm) Vent Cove Base
2. 1-1/2" (38mm) min. Expansion Space
3. Programme III Subfloor Panel
4. Recessed Resilient ECO Pad
5. Concrete Anchor Pin Assembly
6. Hardboard Faced Laminate Panel
7. Vapor Retarder



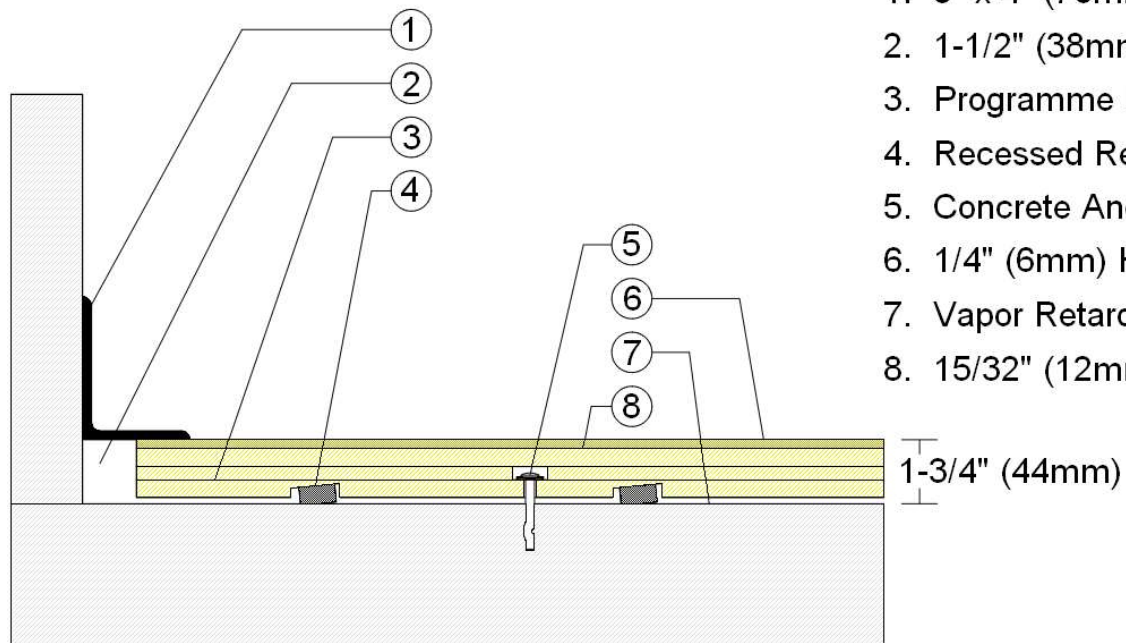
AACER
SPORTS FLOORING
an Infinity Wood Floors Company

Revision	Description	Drawn By / Date
A	Programme III Stage – Hardboard Floor Surface	RR / 1-1-23

PROGRAMME III Stage Floor

F3 Hardboard Surface Option

[Added 15/32" (12mm) plywood layer]



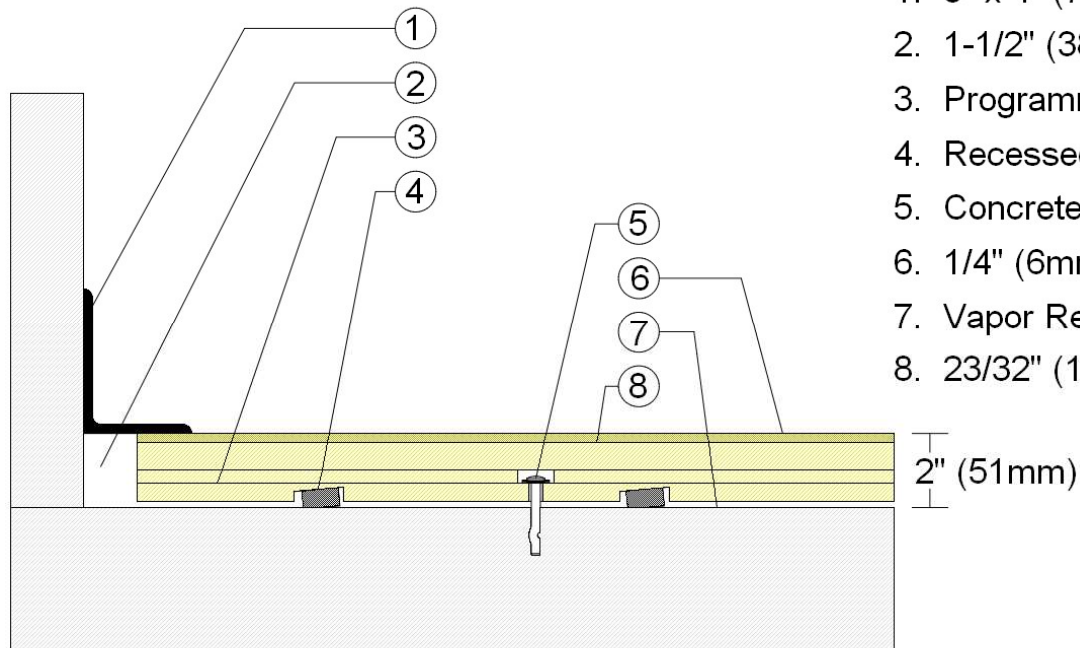
1. 3" x 4" (76mm x 101mm) Vent Cove Base
2. 1-1/2" (38mm) min. Expansion Space
3. Programme III Subfloor Panel
4. Recessed Resilient ECO Pad
5. Concrete Anchor Pin Assembly
6. 1/4" (6mm) Hardboard Surface Layer
7. Vapor Retarder
8. 15/32" (12mm) Added Plywood Layer

Revision	Description	Drawn By / Date
A	Programme III Stage – Hardboard Floor Surface	RR / 1-1-23

PROGRAMME III Stage Floor

F3 Hardboard Surface Option

[Added 23/32" (19mm) plywood layer]



1. 3" x 4" (76mm x 101mm) Vent Cove Base
2. 1-1/2" (38mm) min. Expansion Space
3. Programme III Subfloor Panel
4. Recessed Resilient ECO Pad
5. Concrete Anchor Pin Assembly
6. 1/4" (6mm) Hardboard Surface Layer
7. Vapor Retarder
8. 23/32" (19mm) Added Plywood Layer