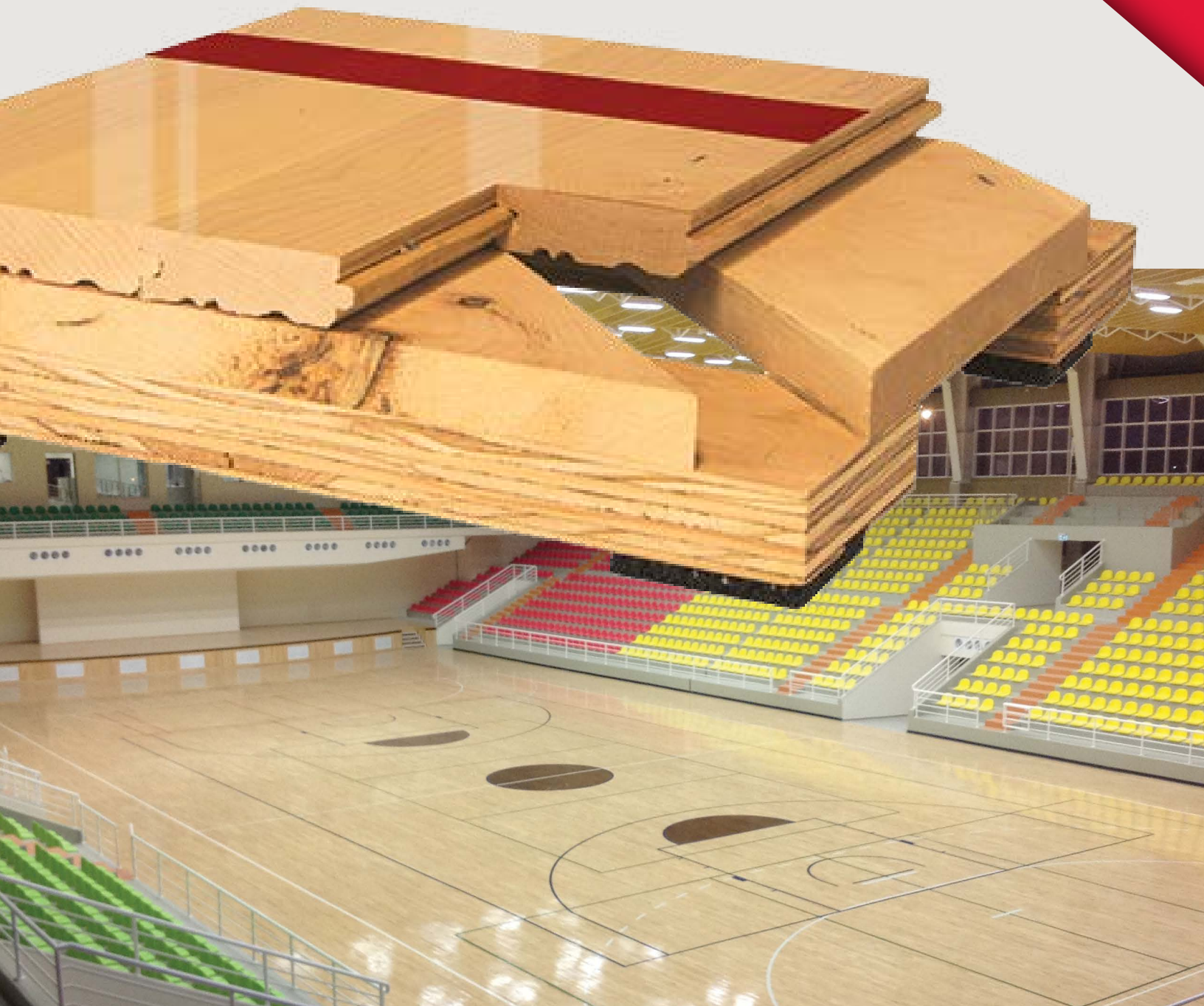


PowerLoc

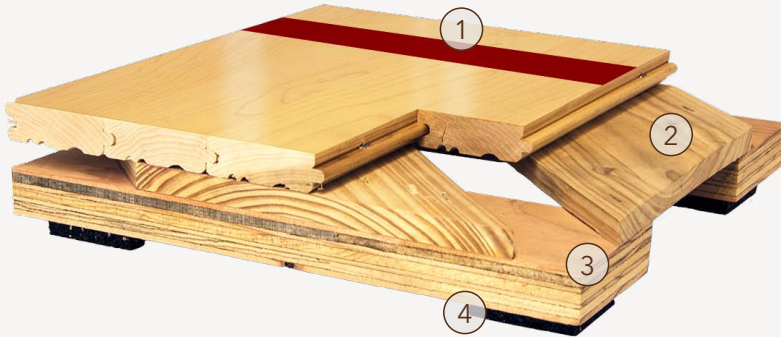
FLOATING SYSTEMS

PowerLoc is a hybrid of our ever popular ScissorLoc and PowerSleeper systems. The combination of these systems delivers a dimensionally stable floor with excellent ventilation capabilities. The option of the PowerVent™ Airflow system adds a feature which will detect moisture and start drying the system with mechanical airflow. The floor's uniform performance makes it a good selection for new and retrofit sports floor applications.



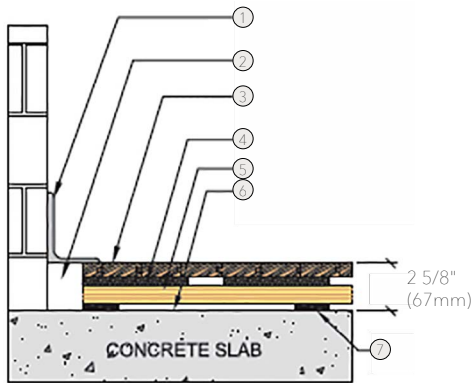
PowerLoc

PowerLoc is a hybrid of our ever popular ScissorLoc and PowerSleeper systems. The floor is a good selection for new and retrofit sports floor applications.



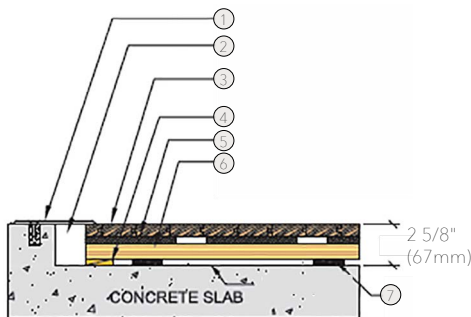
- 1. Precision-milled Acer Maple
- 2. 1/2" x 6" (12mm x 140mm) Dimensional Pine
- 3. Pre-Engineered Plywood Sleeper
- 4. Resilient Pad

WALL BASE



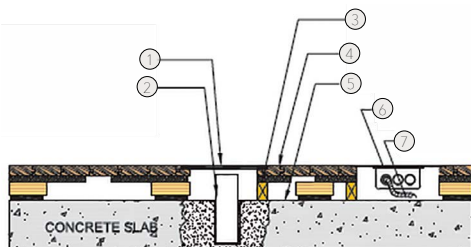
- 1. 3" x 4" (76mm x 101mm) Vent Cove Base
- 2. 2" (51mm) Min. Expansion Space
- 3. MFMA Maple Flooring 25/32" x 2 1/4" (20mm x 57mm)
- 4. 1/2" x 6" (12mm x 140mm) Dimensional Pine
- 5. Pre-Engineered Plywood Sleeper
- 6. Vapor Barrier
- 7. Resilient Pad

THRESHOLD



- 1. 1/4" (6mm) Aluminum Threshold
- 2. 2" (51mm) Min. Expansion Space
- 3. MFMA Maple Flooring 25/32" x 2 1/4" (20mm x 57mm)
- 4. Solid Blocking
- 5. 1/2" x 6" (12mm x 140mm) Dimensional Pine
- 6. Pre-Engineered Plywood Sleeper
- 7. Resilient Pad

EQUIPMENT



- 1. Floor Plate
- 2. 1 1/2" (38mm) Min. Expansion Space Required at all Insert & Electrical Penetrations
- 3. Solid Blocking at Floor Insert Penetrations
- 4. MFMA Maple Flooring 25/32" x 2 1/4" (20mm x 57mm)
- 5. Vapor Barrier
- 6. Flush Electrical Box or Scorer's Box
- 7. Flexible Conduit

Green Status and LEED Contributors



- FSC® Certified Maple - MRC7
- FSC® Certified Subfloor Components - MRC7
- EQ - 4.2
- Regional Materials - MRC5.1 & 5.2

Optional Version

Fixed Resilient

Resilience

TriPower™, AacerFlex, AacerCush, EcoDIN Pads, Performance Foam

Slab Depression 1/2" x 6"

7/16" (11mm) EcoDIN - or - 1/2" (12mm) TriPower™ Pads
 • 25/32" (20mm) flooring - 2 5/8" (67mm)
 • 33/32" (26mm) flooring - 2 7/8" (73mm)

Slab Depression 1" x 6"

7/16" (11mm) EcoDIN - or - 1/2" (12mm) TriPower™ Pads
 • 25/32" (20mm) flooring - 2 7/8" (73mm)
 • 33/32" (26mm) flooring - 3 1/8" (80mm)

Optional Accessory

PowerVent™

Subfloor Construction

Engineered Sleeper and Subfloor

System Type

Floating

Testing Laboratory



Warranty

Lifetime available

It is the policy of Aacer Flooring to continuously improve its line of products. Therefore, Aacer Flooring reserves the right to change, modify or discontinue systems, specifications and accessories of all products at any time without notice or obligation to purchaser.



see us at Sweets.com

