

UltraChannel DC

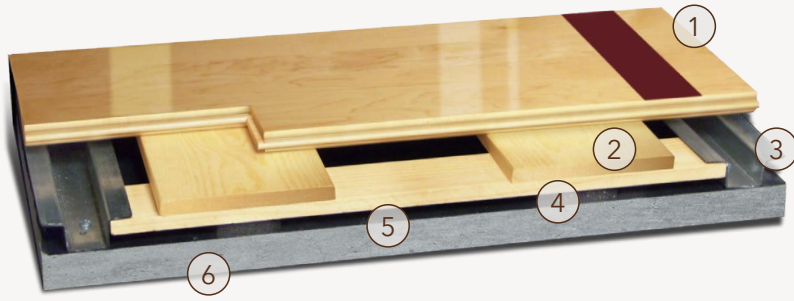
FIXED RESILIENT SYSTEMS

UltraChannel DC is a solid wood fixed resilient floor system designed to produce high performance while maintaining a stable platform. The fixed resilient design has enabled UltraChannel to produce high levels of force reduction while uniquely controlling deformation control.



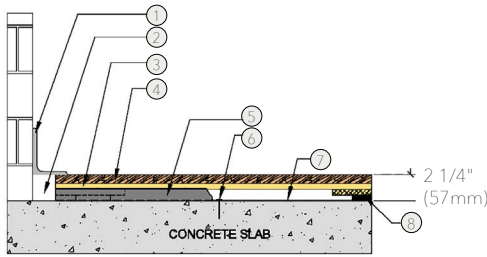
UltraChannel DC

Designed for the highest level of performance, UltraChannel's unique fixed resilient design enables an unparalleled combination of comfort and play in a stable floor system.



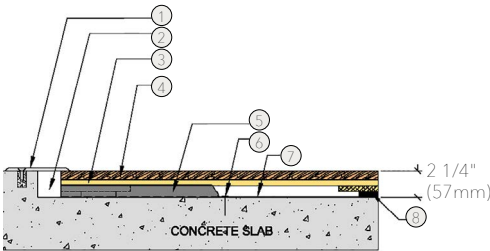
- | | |
|--|------------------------------------|
| 1. Precision-milled Acer Maple | 4. 7/16" (11mm) EcoDIN Pad |
| 2. (2) Layers of Solid Pine Underlayment | 5. 6mil Polyethylene Vapor Barrier |
| 3. 16 gauge Steel UltraChannel | 6. Concrete |

WALL BASE



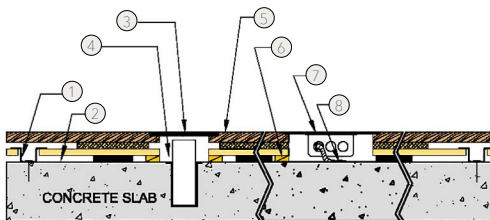
- 3" x 4" (76mm x 101mm) Vent Cove Base
- 2" (51mm) Min. Expansion Space
- UltraChannel Panel
- MFMA Maple Flooring 25/32" x 2 1/4" (20mm x 57mm)
- Steel Channel
- Steel Concrete Anchor
- Vapor Barrier
- 7/16" (11mm) EcoDIN Pad

THRESHOLD



- 1/4" (6mm) Aluminum Threshold
- 2" (51mm) Min. Expansion Space
- UltraChannel Panel
- MFMA Maple Flooring 25/32" x 2 1/4" (20mm x 57mm)
- Steel Channel
- Steel Concrete Anchor
- Vapor Barrier
- 7/16" (11mm) EcoDIN Pad

EQUIPMENT



- Steel Channel
- Vapor Barrier
- Floor Plate
- 1 1/2" (38mm) Min. Expansion Space Required at all Insert & Electrical Penetrations
- MFMA Maple Flooring 25/32" x 2 1/4" (20mm x 57mm)
- Solid Blocking at Floor Insert Penetration
- Flush Electrical Box or Scorer's Box
- Flexible Conduit

Anchorage

Certified

Green Status and LEED Contributors

Resilience

Optional Version

Optional Accessory

Slab Depression

Subfloor Construction

System Type

Testing Laboratory

Warranty

Steel Channel



- FSC® Certified Maple - MRC7
- FSC® Certified Subfloor Components - MRC7
- EQ - 4.2
- Regional Materials - MRC5.1 & 5.2

EcoDIN Pads

Other pad options available. Contact your Regional Sales Manager.

PowerVent™ Airflow System

7/16" (11mm) EcoDIN

- 25/32" (20mm) flooring – 2 1/4" (57mm)
- 33/32" (26mm) flooring – 2 1/2" (64mm)

Solid Pine

Fixed Resilient



Lifetime available

It is the policy of Acer Flooring to continuously improve its line of products. Therefore, Acer Flooring reserves the right to change, modify or discontinue systems, specifications and accessories of all products at any time without notice or obligation to purchaser.



see us at
Sweets.com

