

AACER™

SPORTS FLOORING

ScissorLoc™

Aacer ScissorLoc's criss-cross, solid wood subfloor creates a dimensionally stable system with excellent natural ventilation capabilities. The option of the PowerVent™ Airflow system adds a feature which will detect moisture and start drying the system with mechanical airflow.



see us at
Sweets.com



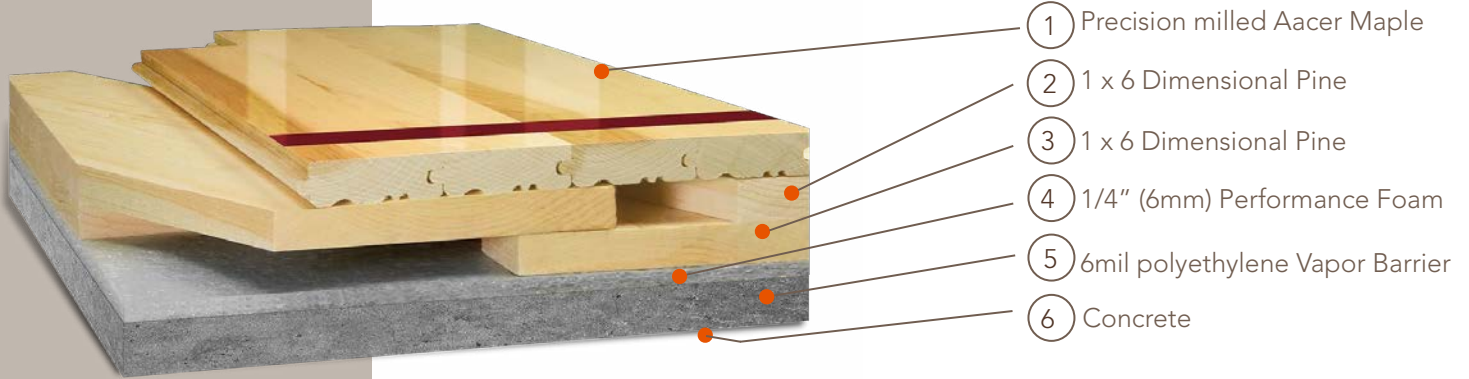
The mark of responsible forestry

FLOATING



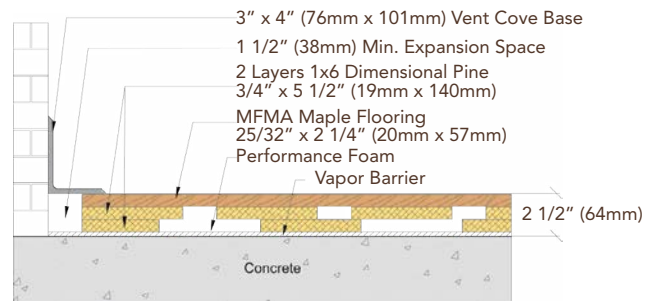
ScissorLoc™

Available ScissorLoc™ Floor Systems: I, II, III, DC and LP

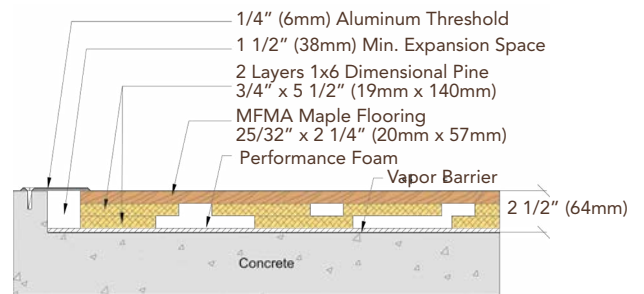


Certified	
Green Status LEED Contributors	<p>FSC® Certified Maple - MRc7 FSC® Certified Subfloor Components - MRc7 EQ - 4.2 Regional Materials - MRc5.1 & 5.2</p>
Optional Versions	I, II, III, DC, LP, PowerVent™
Resilience	1/4" Performance Foam <i>*other pad options available</i>
Slab Depression	<p>ScissorLoc™ I, II 25/32" (20mm) flooring - 2 1/2" (64mm) 33/32" (26mm) flooring - 2 3/4" (70mm)</p> <p>ScissorLoc™ LP 25/32" (20mm) flooring - 2" (51mm) 33/32" (26mm) flooring - 2 1/4" (57mm)</p> <p>ScissorLoc™ III with 3/4" TriPower™ Pad 25/32" (20mm) flooring - 3" (76mm) 33/32" (26mm) flooring - 3 1/4" (83mm)</p> <p>ScissorLoc™ DC with 3/4" Performance Foam 25/32" (20mm) flooring - 2 1/2" (64mm) 33/32" (26mm) flooring - 2 3/4" (70mm)</p>
Retrofit	System may be adjusted to fit any slab profile
Subfloor Construction	Solid Pine
System Type	Floating System
Testing Laboratory	
U.S. Patent#	#5,299,401
Warranty	Lifetime available

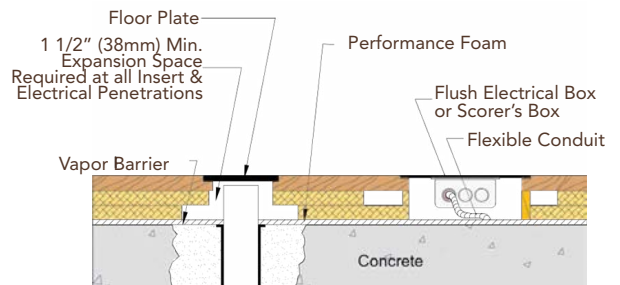
WALL BASE



THRESHOLD



EQUIPMENT



AacerFlooring.com

877.582.1181

It is the policy of Aacer Flooring to continuously improve its line of products. Therefore, Aacer Flooring reserves the right to change, modify or discontinue systems, specifications and accessories of all products at any time without notice or obligation to purchaser.

May 2016