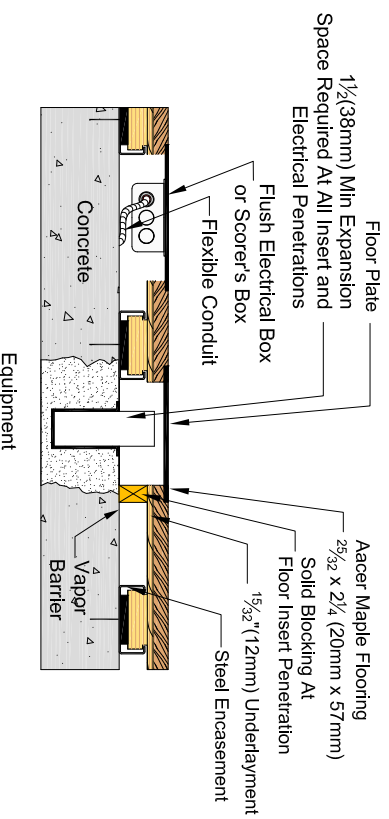
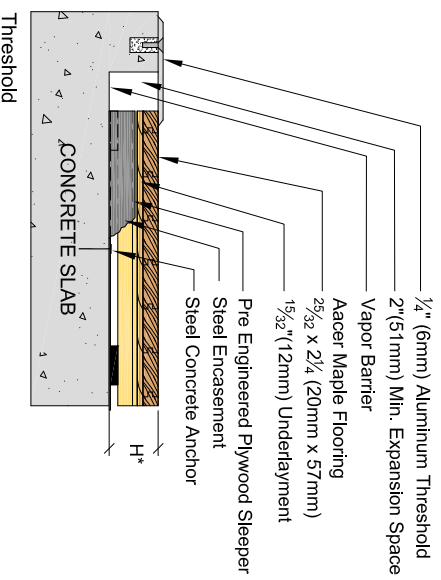
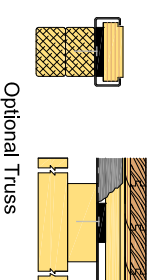
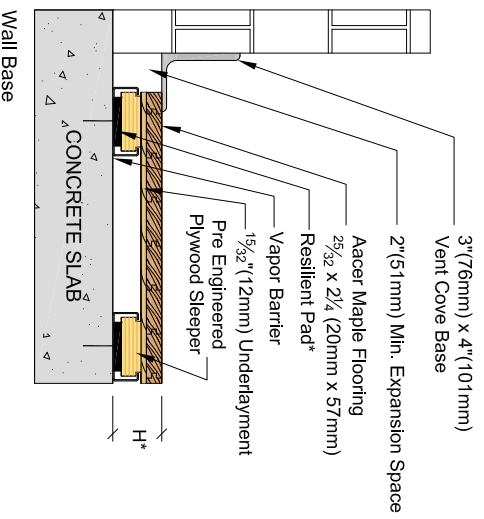


# Anchored PowerSleeper Steel Encased

Resilient Pad Options*	Pad Description	Profile Height (H*)
	1/2" (12mm) Tri-Power Pad, ASTM Harness 55	2 5/8" (67mm)
	7/16" (11mm) EcoDin	2 5/8" (67mm)

\* Refer to key for pad options and system heights



REVISIONS		
Description	Date	Who

<p>Acerc Flooring LLC 970 Ogden Rd Peshigo, WI 54157</p> <p>Phone: 715-582-1181 Fax: 715-582-1182</p>	<p>DESCRIPTION: <b>Anchored PowerSleeper Steel Encased</b></p> <p>PART NUMBER: n/a</p> <p>DATE: 3-24-2015</p> <p>DRAWN BY: S Daniel</p> <p>CHECKED BY:</p>	<p>FILE: AnchoredPwSlp_SE</p> <p>SHEET: 1</p>
---	--	---

