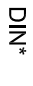

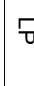
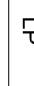

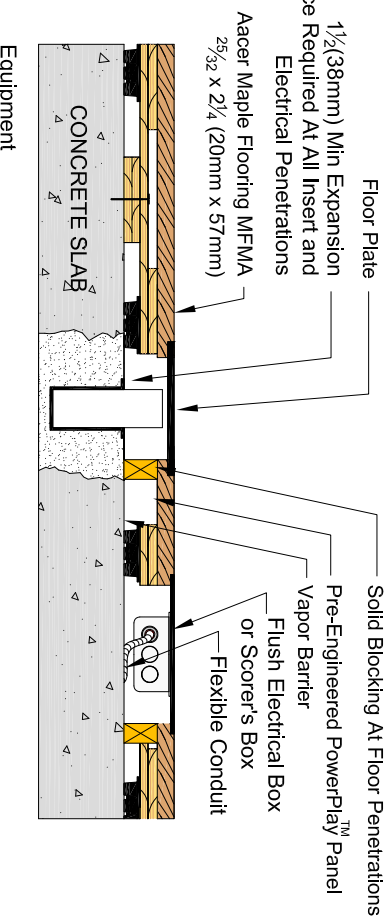
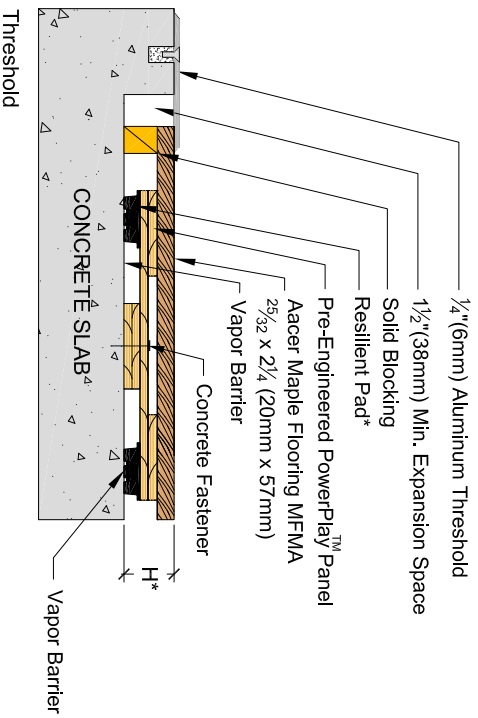
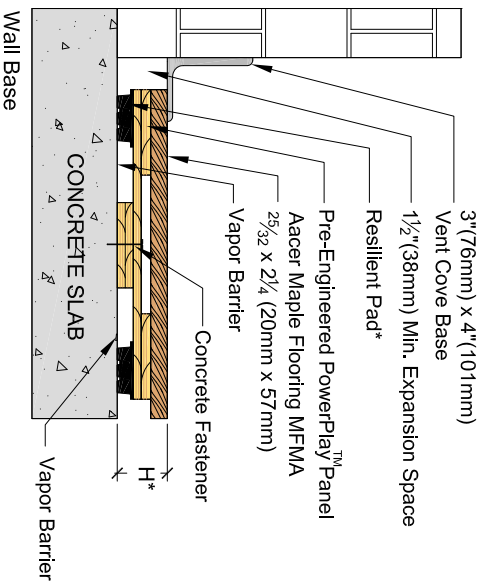


# Acerc PowerPlay™

System	Resilient Pad Options*	Pad Description	Profile Height (H*)
DIN*		3/4" (19mm) Tri-Power Pad. Available in 3 ASTM Harnesses - 50, 60, 70	2 3/8" (60mm)
II		3/4" (19mm) Acer Flex	2 3/8" (60mm)
LP		1/2" (12mm) Tri-Power Pad. ASTM Harness 55	2 1/8" (54mm)
LP		7/16" (11mm) EcoDin	2 1/8" (53mm)
VLP		3/8" (10mm) AcerCush	1 7/8" (48mm)

\* Refer to key for pad options and system heights



## REVISIONS

ID.	DESCRIPTION	WHEN	WHO
-			

Acerc Flooring LLC  
970 Ogden Rd  
Peshigo, WI 54157

Phone: 715-582-1181  
Fax: 715-582-1182

DESCRIPTION:  
**Acerc PowerPlay**

PART NUMBER:  
n/a

SCALE:  
n/a



**ACERC**  
SPORTS FLOORING

DATE:  
**3-24-2015**

DRAWN BY:  
S Daniel

FILE:  
AcercPowerPlay

CHECKED BY:

SHEET:  
**1**