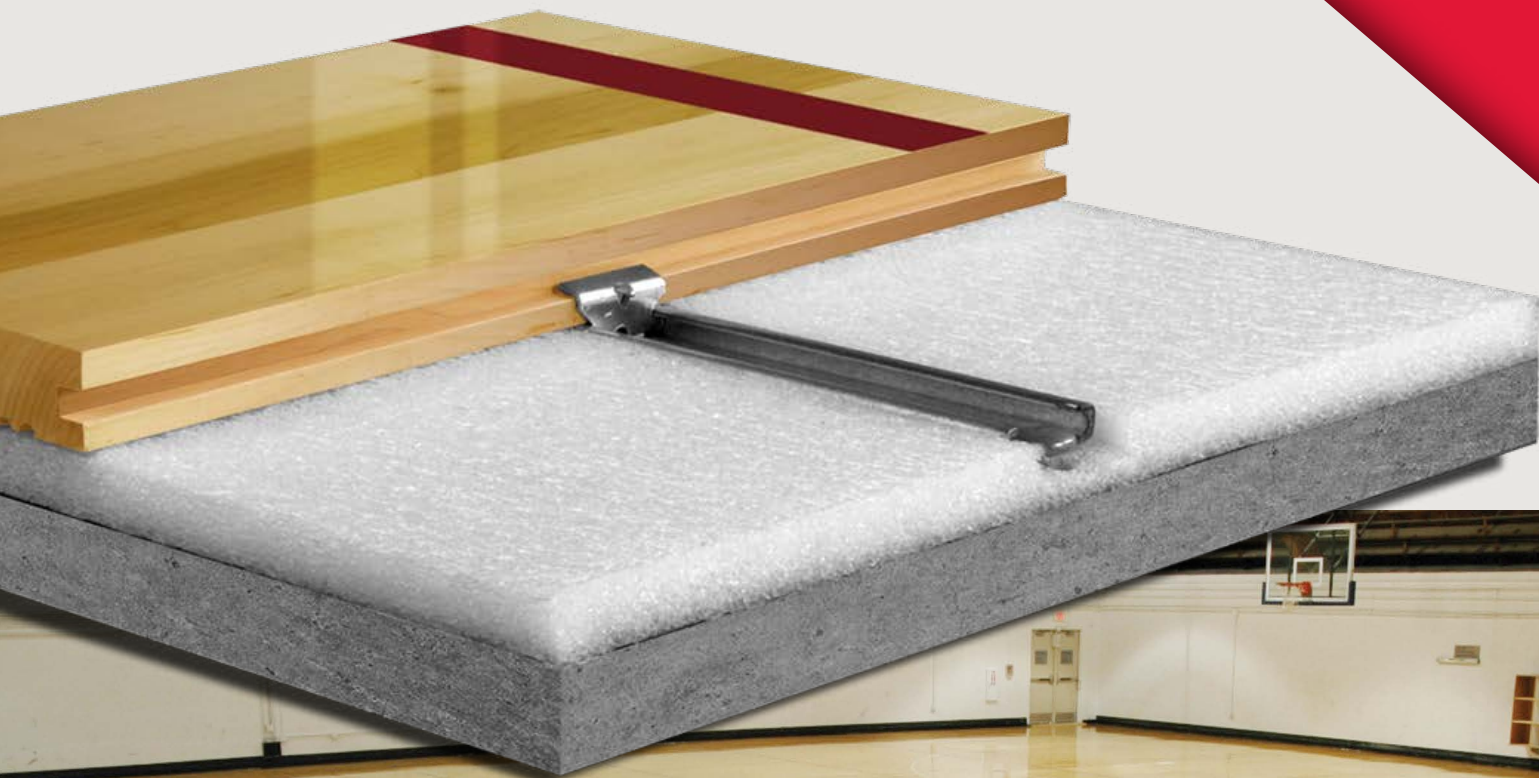
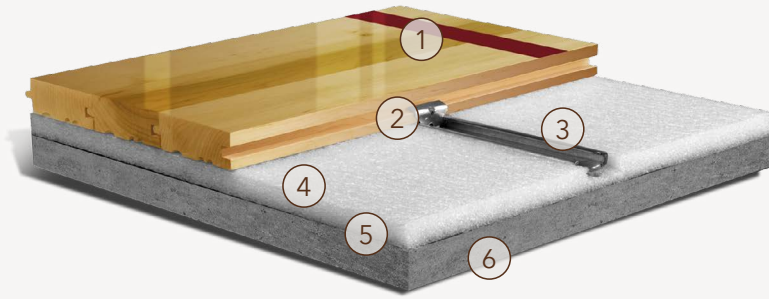


AacerLoc™


FIXED SYSTEMS

AacerLoc™ is a fixed, low profile system with fast ball response, longevity and integrated expansion provisions to make it the system least prone to buckling. Ideal for retrofits and remodels.

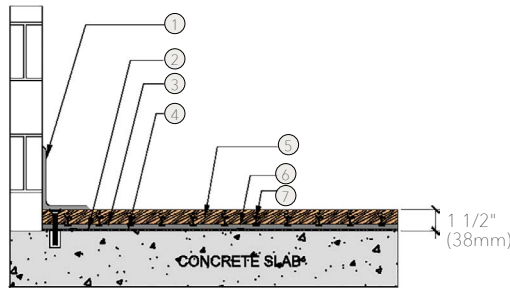




- | | |
|---------------------------------|------------------------------------|
| 1. Precision-milled Acer Maple | 4. Channeled Performance Foam |
| 2. AacerLoc™ Clip | 5. 6mil Polyethylene Vapor Barrier |
| 3. Heavy 16 gauge Steel Channel | 6. Concrete |

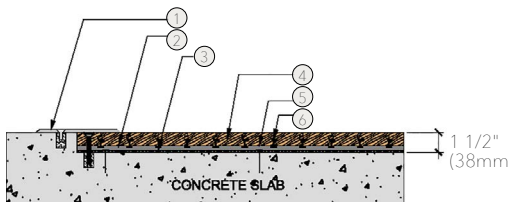
Anchorage	Clip and Channel
Green Status and LEED Contributors	 <ul style="list-style-type: none"> • FSC® Certified Maple - MRc7 • FSC® Certified Subfloor Components - MRc7 • EQ - 4.2 • Regional Materials - MRc5.1 & 5.2
Resilience	1/2" (12mm) Channeled Performance Foam
Slab Depression	33/32" (26mm) flooring – 1 1/2" (38mm) 27/32" (22mm) flooring – 1 1/4" (32mm)
Subfloor Construction	Foam and Steel Channel
System Type	Fixed
Warranty	Lifetime available

WALL BASE



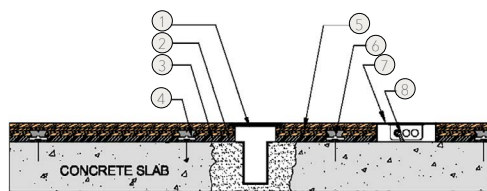
1. 3" x 4" (76mm x 101mm) Vent Cove Base
2. Vapor Barrier
3. AacerLoc™ Channel
4. 1/2" (12mm) Channeled Performance Foam
5. MFMA Maple Flooring 33/32" x 2 1/4" (26mm x 57mm)
6. Concrete Fastener
7. Steel Clip

THRESHOLD



1. 1/4" (6mm) Aluminum Threshold
2. AacerLoc™ Channel
3. Vapor Barrier
4. MFMA Maple Flooring 33/32" x 2 1/4" (26mm x 57mm)
5. Concrete Fastener
6. Steel Clip

EQUIPMENT



1. Floor Plate
2. Vapor Barrier
3. 1/2" (12mm) Channeled Performance Foam
4. AacerLoc™ Clip and Channel
5. MFMA Maple Flooring 33/32" x 2 1/4" (26mm x 57mm)
6. Concrete Fastener
7. Flush Electrical Box or Scorer's Box
8. Flexible Conduit

It is the policy of Aacer Flooring to continuously improve its line of products. Therefore, Aacer Flooring reserves the right to change, modify or discontinue systems, specifications and accessories of all products at any time without notice or obligation to purchaser.



see us at
Sweets.com

