

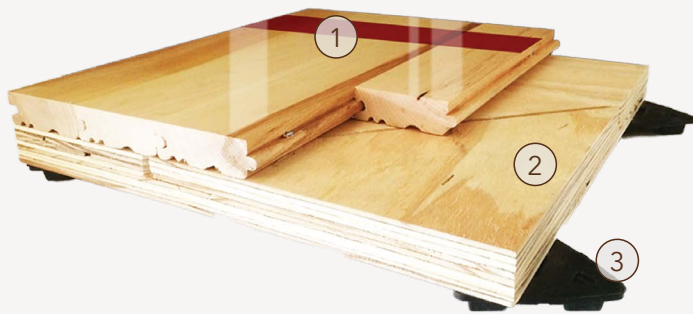
# AacerFlex™

## FLOATING SYSTEMS

AacerFlex™ is a performance sports floor system which meets the ergonomic needs of today's athlete through sufficient force reduction, increased energy return, as well as outstanding ball rebound characteristics. AacerFlex's unique pad minimizes potential deadspots by increasing pad surface contact area without compromising the load bearing ability of the system.

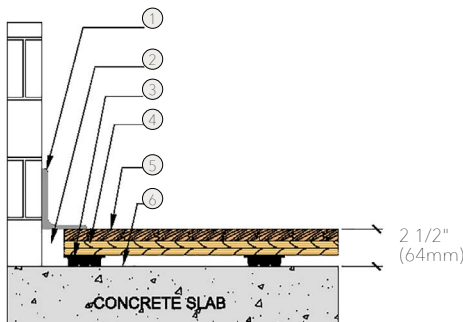


AacerFlex™ incorporates precision engineered pads that integrates load bearing ability with enhanced athletic performance. AacerFlex can be specified for multipurpose rooms, competitive sports applications and dance/aerobics. Available in AacerFlex™, AacerFlex™ TP and AacerFlex™ EN-DIN.



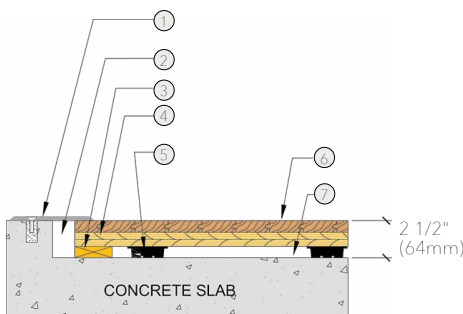
- 1. Precision-milled Aacer Maple
- 2. Two layers of 15/32" (12mm) NOM. Exposure 1, APA Rated Sheathing
- 3. 3/4" (19mm) TriPower™ Pad

## WALL BASE



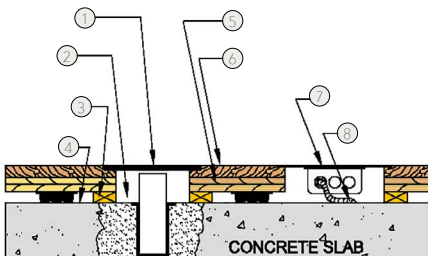
- 1. 3" x 4" (76mm x 101mm) Vent Cove Base
- 2. 1 1/2" (38mm) Min. Expansion Space
- 3. 3/4" (19mm) TriPower™ Pad
- 4. Two layers 15/32" (12mm) NOM. Exposure 1, APA Rated Sheathing
- 5. MFMA Maple Flooring 25/32" x 2 1/4" (20mm x 57mm)
- 6. Vapor Barrier

## THRESHOLD



- 1. 1/4" (6mm) Aluminum Threshold
- 2. 1 1/2" (38mm) Min. Expansion Space
- 3. Solid Blocking
- 4. Two layers 15/32" (12mm) NOM. Exposure 1, APA Rated Sheathing
- 5. 3/4" (19mm) TriPower™ Pad
- 6. MFMA Maple Flooring 25/32" x 2 1/4" (20mm x 57mm)
- 7. Vapor Barrier

## EQUIPMENT



- 1. Floor Plate
- 2. 1 1/2" (38mm) Min. Expansion Space Required at all Insert & Electrical Penetrations
- 3. Solid Blocking at Floor Insert Penetrations
- 4. Vapor Barrier
- 5. Two layers 15/32" (12mm) NOM. Exposure 1, APA Rated Sheathing
- 6. MFMA Maple Flooring 25/32" x 2 1/4" (20mm x 57mm)
- 7. Flush Electrical Box or Scorer's Box
- 8. Flexible Conduit

Certified



Green Status and LEED Contributors



- FSC® Certified Maple - MRC7
- FSC® Certified Subfloor Components - MRC7
- EQ - 4.2
- Regional Materials - MRC5.1 & 5.2

Optional Versions

AacerFlex, EcoDIN, TriPower Pads:

- Black, 1/2" (12mm), 50D
- Red, 3/4" (19mm), 70D
- Black, 3/4" (19mm), 60D
- Blue, 3/4" (19mm), 50D

\*Other pad options available. Contact your Regional Sales Manager.

Resilience

Aacer TriPower™ Pad

Slab Depression

3/4" (19mm) TriPower™, AacerFlex Pads

- 25/32" (20mm) flooring – 2 1/2" (64mm)
- 33/32" (26mm) flooring – 2 3/4" (70mm)

1/2" (12mm) TriPower™ Pad

- 25/32" (20mm) flooring – 2 1/4" (57mm)
- 33/32" (26mm) flooring – 2 1/2" (64mm)

7/16" (11mm) EcoDIN Pad

- 25/32" (20mm) flooring – 2 1/8" (55mm)
- 33/32" (26mm) flooring – 2 3/8" (60mm)

Subfloor Construction

Plywood

System Type

Floating

Testing Laboratory



Warranty

Lifetime available

*It is the policy of Aacer Flooring to continuously improve its line of products. Therefore, Aacer Flooring reserves the right to change, modify or discontinue systems, specifications and accessories of all products at any time without notice or obligation to purchaser.*



see us at [Sweets.com](http://Sweets.com)

