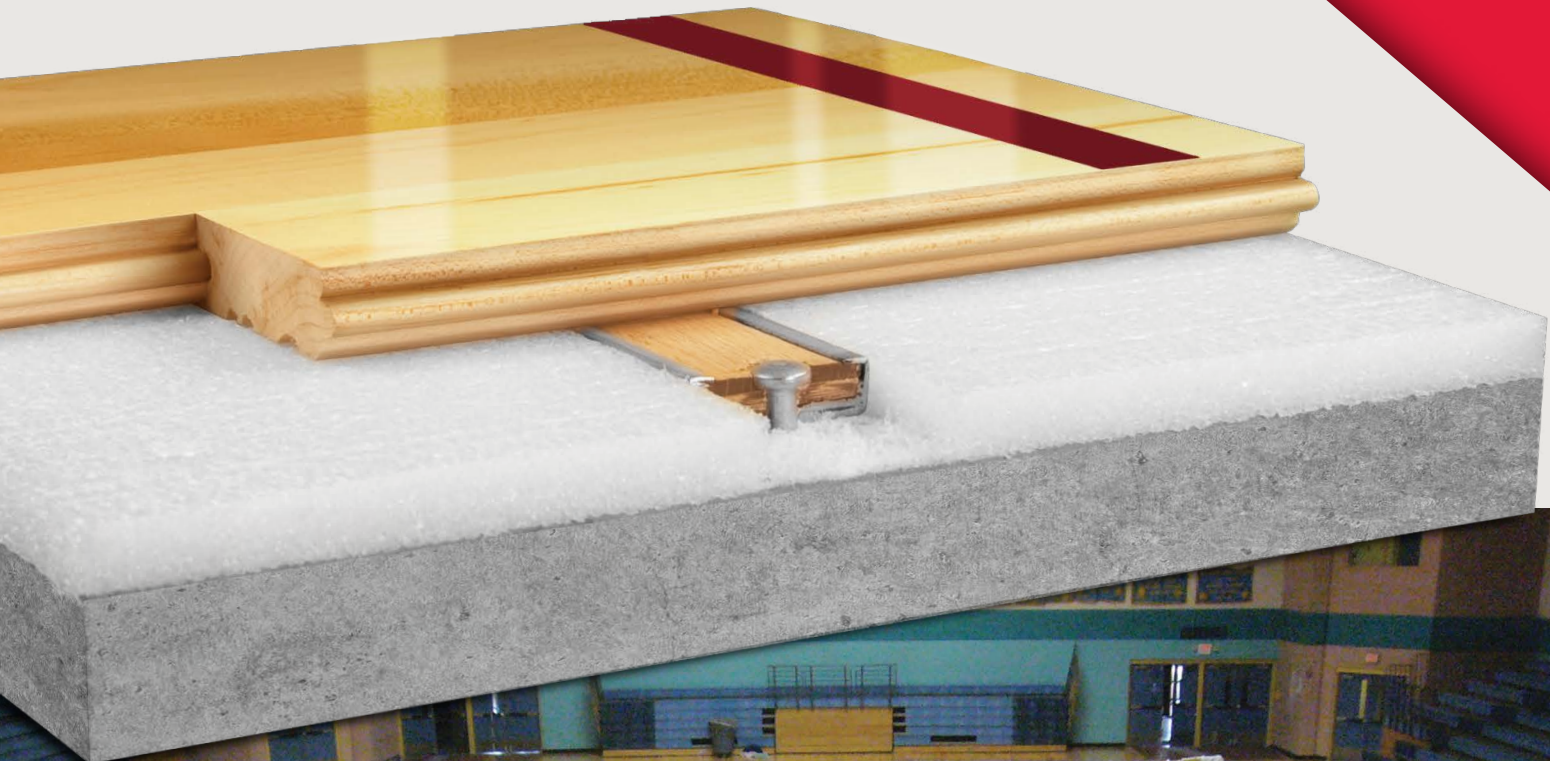
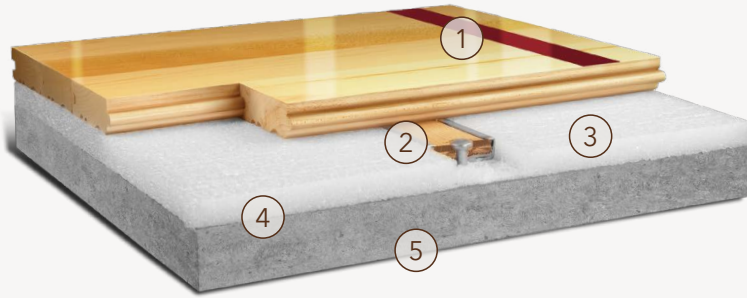


# AacerFast™

## FIXED SYSTEMS

AacerFast™ is an anchored low profile system. This system combines the benefits of a nail down floor with the stability of an anchored floor. It is suitable for new and retrofit commercial projects and sports flooring applications.

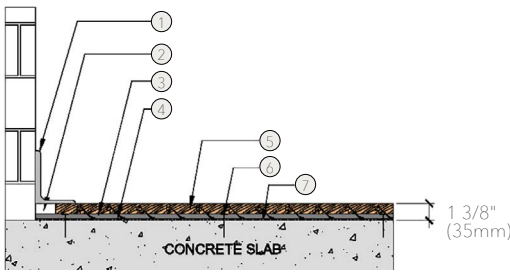




- 1. Precision-milled Aacer Maple
- 2. AacerFast™ Channel
- 3. Channeled Performance Foam
- 4. 6mil Polyethylene Vapor Barrier
- 5. Concrete

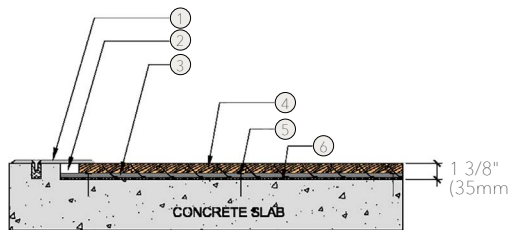
Anchorage	Channel and Nail
Green Status and LEED Contributors	<ul style="list-style-type: none"> <li>• FSC® Certified Maple - MRc7</li> <li>• EQ - 4.2</li> <li>• Regional Materials - MRc5.1 &amp; 5.2</li> </ul>
Resilience	1/2" (12mm) Channeled Performance Foam
Slab Depression	25/32" (20mm) flooring – 1 3/8" (35mm) 33/32" (26mm) flooring – 1 5/8" (41mm)
Subfloor Construction	Foam and Wood Steel Encased Channel
System Type	Fixed
Testing Laboratory	
Warranty	Lifetime available

## WALL BASE



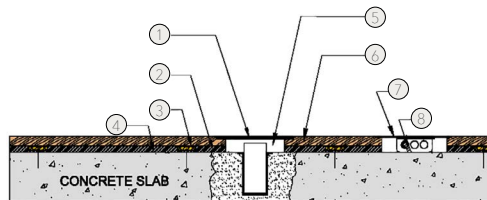
- 1. 3" x 4" (76mm x 101mm) Vent Cove Base
- 2. 1 1/2" (38mm) Min. Expansion Space
- 3. AacerFast™ Channel
- 4. 1/2" (12mm) Channeled Performance Foam
- 5. MFMA Maple Flooring 25/32" x 2 1/4" (20mm x 57mm)
- 6. Concrete Fastener
- 7. Vapor Barrier

## THRESHOLD



- 1. 1/4" (6mm) Aluminum Threshold
- 2. 1 1/2" (38mm) Min. Expansion Space
- 3. AacerFast™ Channel
- 4. MFMA Maple Flooring 25/32" x 2 1/4" (20mm x 57mm)
- 5. Concrete Fastener
- 6. Vapor Barrier

## EQUIPMENT



- 1. Floor Plate
- 2. 1/2" (12mm) Channeled Performance Foam
- 3. AacerFast™ Channel
- 4. Vapor Barrier
- 5. 1 1/2" (38mm) Min. Expansion Space Required at all Insert & Electrical Penetrations
- 6. MFMA Maple Flooring 25/32" x 2 1/4" (20mm x 57mm)
- 7. Flush Electrical Box or Scorer's Box
- 8. Flexible Conduit

*It is the policy of Aacer Flooring to continuously improve its line of products. Therefore, Aacer Flooring reserves the right to change, modify or discontinue systems, specifications and accessories of all products at any time without notice or obligation to purchaser.*



see us at  
**Sweets.com**

