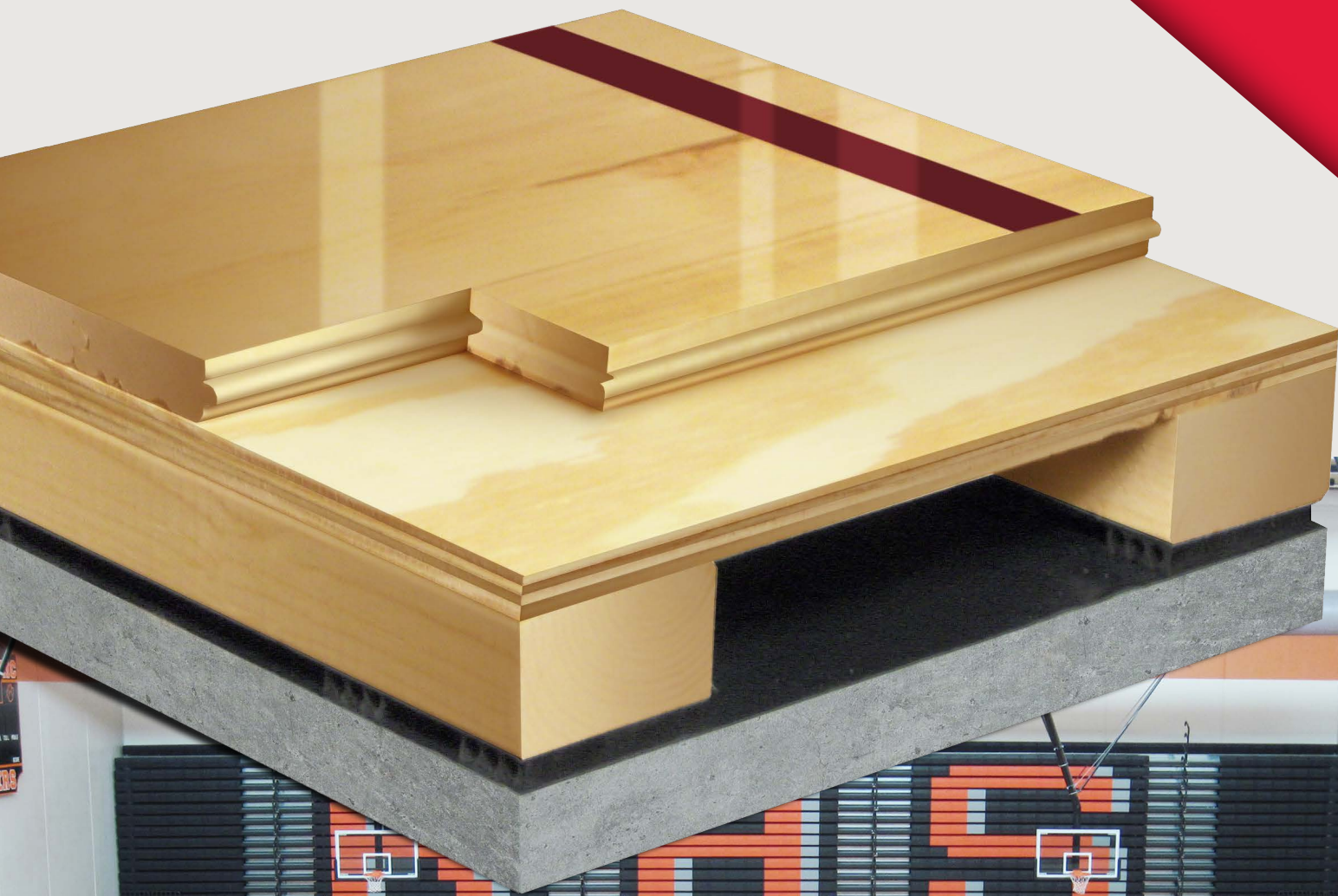


AacerCush I+

FLOATING SYSTEMS

AacerCush I+ is a shock absorbent variable profile system. This system combines sleepers with a plywood layer for greater dimensional strength. This system is ideal for new and retrofit commercial and athletic applications.

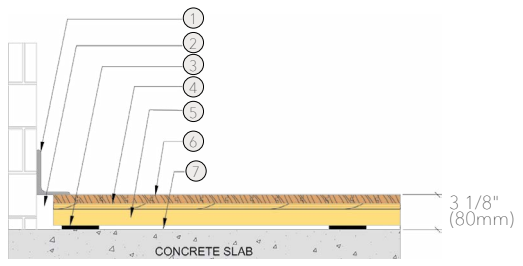


AacerCush I+



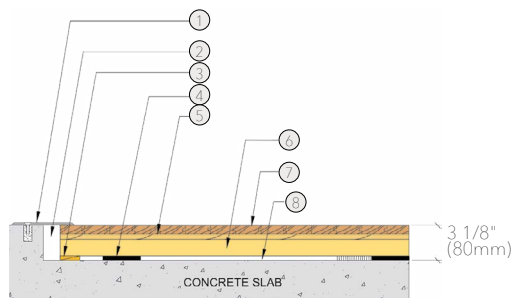
- 1. Precision-milled Aacer Maple
- 2. Layer of 15/32" (12mm) NOM. Exposure 1, APA Rated Sheathing
- 3. 2" x 3" (38mm x 64mm) AacerCush Sleeper
- 4. 3/8" (10mm) AacerCush Pad
- 5. 6mil Polyethylene Vapor Barrier
- 6. Concrete

WALL BASE



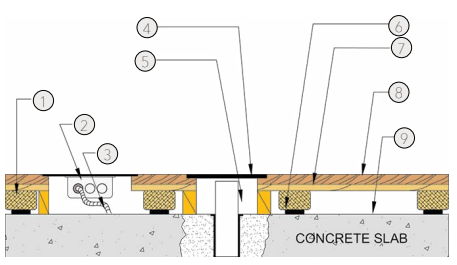
- 1. 3" x 4" (76mm x 101mm) Vent Cove Base
- 2. 1 1/2" (38mm) Min. Expansion Space
- 3. 3/8" (10mm) AacerCush Pad
- 4. 15/32" (12mm) NOM. Exposure 1 APA rated Sheathing
- 5. AacerCush Sleeper
- 6. MFMA Maple Flooring 25/32" x 2 1/4" (20mm x 57mm)
- 7. Vapor Barrier

THRESHOLD



- 1. 1/4" (6mm) Aluminum Threshold
- 2. 1 1/2" (38mm) Min. Expansion Space
- 3. Solid Blocking
- 4. 3/8" (10mm) AacerCush Pad
- 5. 15/32" (12mm) NOM. Exposure 1 APA rated Sheathing
- 6. AacerCush Sleeper
- 7. MFMA Maple Flooring 25/32" x 2 1/4" (20mm x 57mm)
- 8. Vapor Barrier

EQUIPMENT



- 1. AacerCush Sleeper
- 2. Flush Electrical Box or Scorer's Box
- 3. Flexible Conduit
- 4. Floor Plate
- 5. 1 1/2" (38mm) Min. Expansion Space Required at all Insert & Electrical Penetrations
- 6. 3/8" (10mm) AacerCush Pad
- 7. 15/32" (12mm) NOM. Exposure 1 APA rated Sheathing
- 8. MFMA Maple Flooring 25/32" x 2 1/4" (20mm x 57mm)
- 9. Vapor Barrier

Certified



Green Status and LEED Contributors



- FSC® Certified Maple - MRc7
- FSC® Certified Subfloor Components - MRc7
- EQ - 4.2
- Regional Materials - MRc5.1 & 5.2

Resilience

3/8" (10mm) and 5/8" (16mm) AacerCush Pad
*other pad options available

Slab Depression

3/8" (10mm) AacerCush Pad

- 25/32" (20mm) flooring – 3 1/8" (80mm)
- 33/32" (26mm) flooring – 3 3/8" (86mm)

5/8" (16mm) AacerCush Pad

- 25/32" (20mm) flooring – 3 3/8" (86mm)
- 33/32" (26mm) flooring – 3 5/8" (92mm)

Subfloor Construction

Sleeper Plywood

System Type

Floating

Testing Laboratory



Warranty

Lifetime available

It is the policy of Aacer Flooring to continuously improve its line of products. Therefore, Aacer Flooring reserves the right to change, modify or discontinue systems, specifications and accessories of all products at any time without notice or obligation to purchaser.