

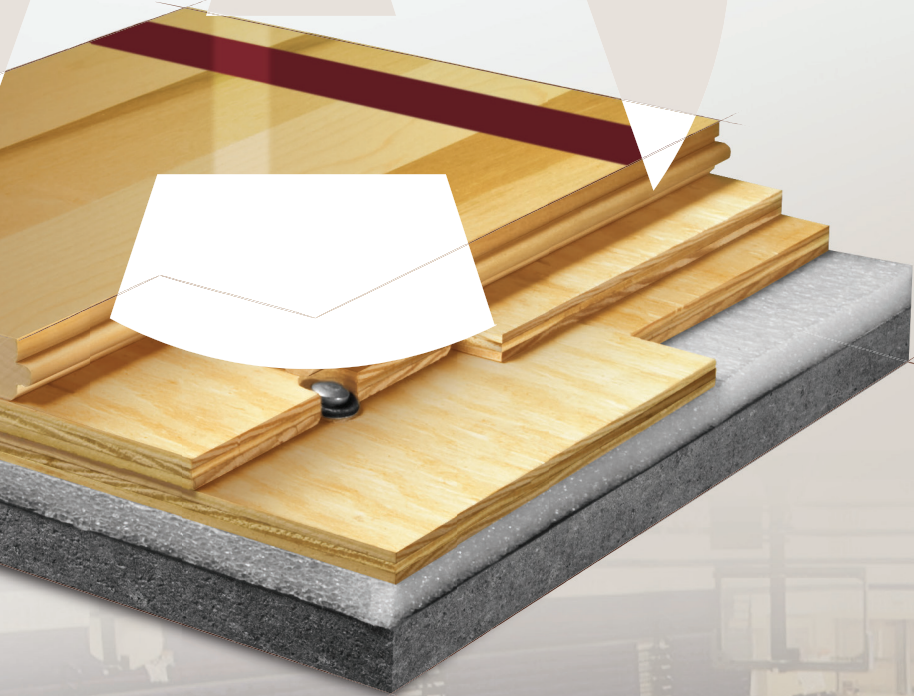


AACER

SPORTS FLOORING

AacerChannel™ VLP

The AacerChannel™ VLP performance sports floor system provides the resiliency and safety of a floating floor and the stability of an anchored system. The floor's 100% factory assembled panels ensure uniform performance and fast installation making it ideal for facility retrofit projects and facilities requiring lower profile systems.



see us at
Sweets.com



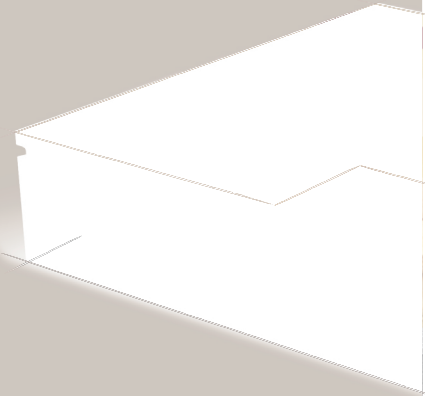
FIXED RESILIENT



AACER
SPORTS FLOORING

AacerChannel™ VLP

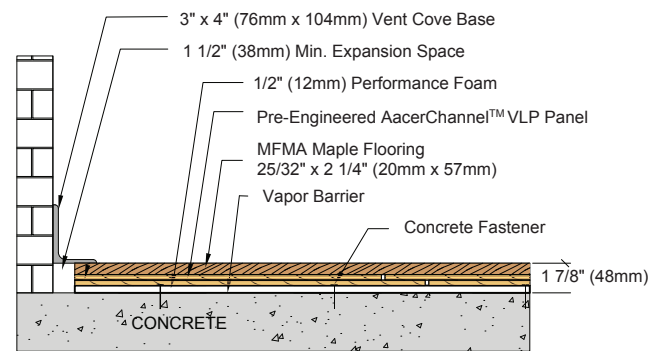
The AacerChannel™ VLP is a fixed resilient sports performance floor system that features a monolithic subfloor with full flex and a full thickness APA engineered underlayment to maximize system performance. The result is a DIN certified floor with increased stability, shock absorbency, energy return and **low vibration**.



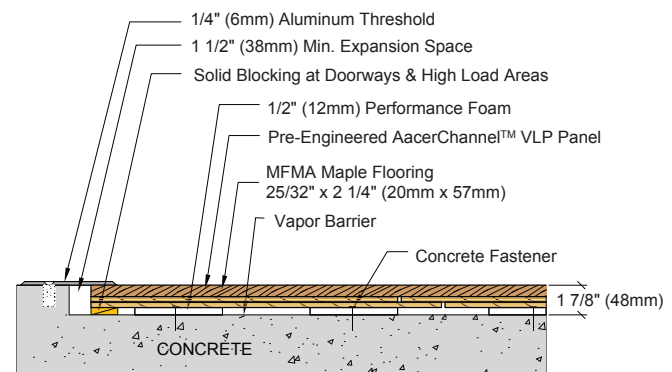
- 1 Precision milled Aacer Maple
- 2 Integrated Panels form a monolithic subfloor
- 3 Performance Foam
- 4 Collared Steel Drive Pin
- 5 6mil polyethylene Vapor Barrier
- 6 Concrete

Anchorage	Drill and Pin
Certified	
Green Status LEED Contributors	<p>FSC® Certified Maple - MRc7 FSC® Certified SubFloor Components - MRc7 EQ - 4.2 Regional Materials - MRc5.1 & 5.2</p>
Optional Versions	Channeled Foam, 12mm TriPower™ Pad, EcoDIN
Resilience	Performance Foam
Slab Depression	1/2" (12mm) Performance Foam, 1/2" (12mm) TriPower™ Pad 25/32" (20mm) flooring - 1 7/8" (48mm) 33/32" (26mm) flooring - 2 1/8" (54mm)
Subfloor Construction	Pre-manufactured panels
System Type	Fixed Resilient / Floating
Testing Laboratory	
U.S. Patent#	# 5,647,183
Warranty	Lifetime available

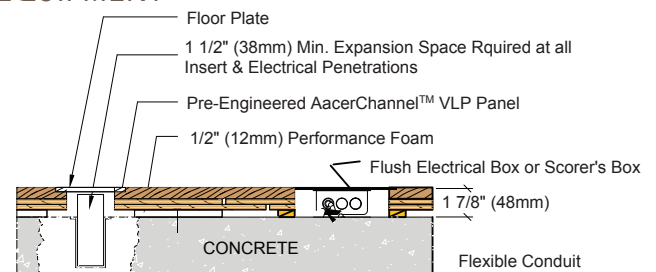
WALL BASE



THRESHOLD



EQUIPMENT



AacerFlooring.com (877) 582-1181

It is the policy of Aacer Flooring to continuously improve its line of products. Therefore, Aacer Flooring reserves the right to change, modify or discontinue systems, specifications and accessories of all products at any time without notice or obligation to purchaser.

October 2014