



# AACER

SPORTS FLOORING

## ScissorLoc™

Aacer ScissorLoc's criss-cross solid wood sub floor creates a dimensionally stable system with excellent natural ventilation capabilities. The option of the PowerVent™ Airflow system adds a feature which will detect moisture and start drying the system with mechanical airflow.



Sweets.com

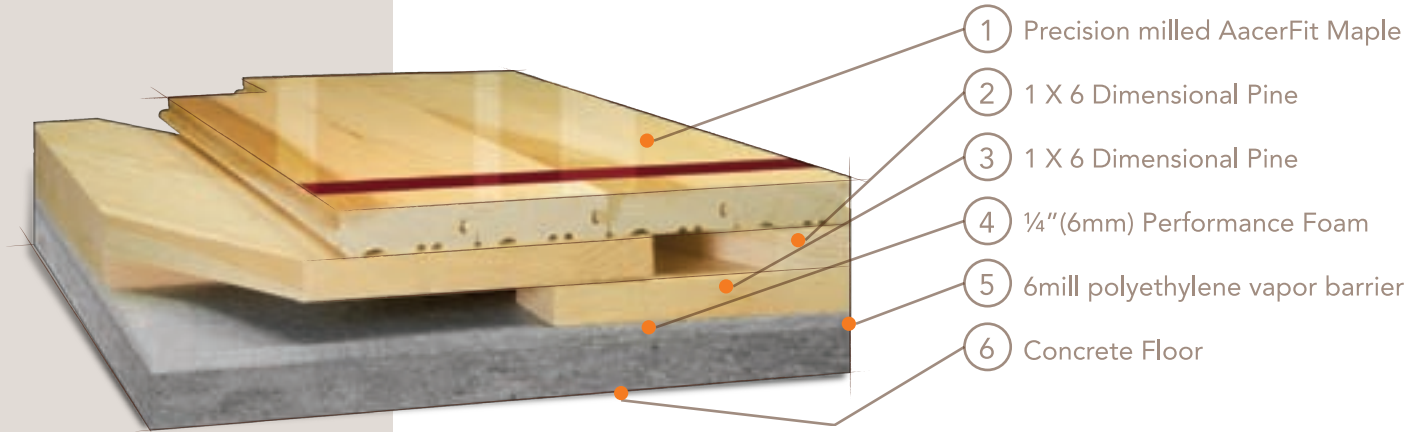


# FLOATING



## ScissorLoc™

Available are these ScissorLoc™ Floor Systems: I, II, III, DC and LP.



Certified



Green Status  
LEED Contributors



FSC Maple - MRc7  
FSC SubFloor Components - MRc7  
EQ - 4.2  
Regional Materials MRc5.1 & 5.2

Optional Versions

I, II, III, DC, LP, Powervent™

Resilience

Performance Foam

Slab Depression

**ScissorLoc™, I, II, D.C.**

25/32" (20 mm) flooring - 2 1/2" (64mm)  
33/32" (26 mm) flooring - 2 3/4" (70mm)

**ScissorLoc™ LP**

25/32" (20 mm) flooring - 2" (51mm)  
33/32" (26 mm) flooring - 2 1/4" (57mm)

**ScissorLoc™ III**

25/32" (20 mm) flooring - 3" (76mm)  
33/32" (26 mm) flooring - 3 1/4" (83mm)

Retrofit

System maybe adjusted to fit any slab profile

Subfloor Construction

Solid Pine

System Type

Floating System

Testing Laboratory



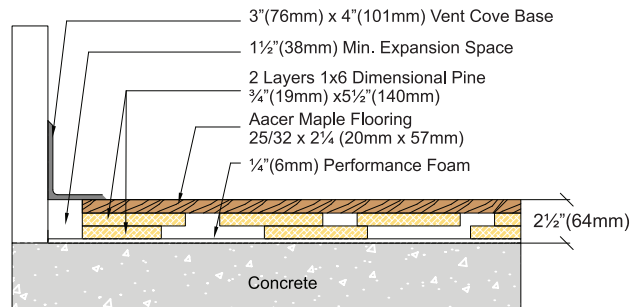
U.S. Patent#

#5,299,401

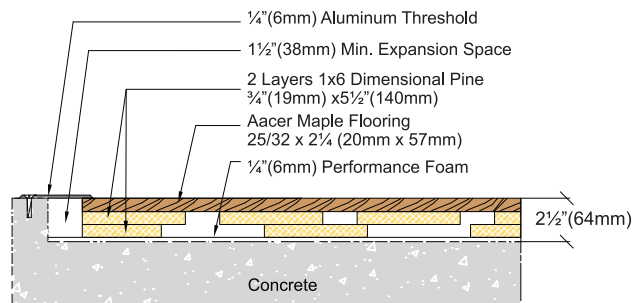
Warranty

Lifetime available

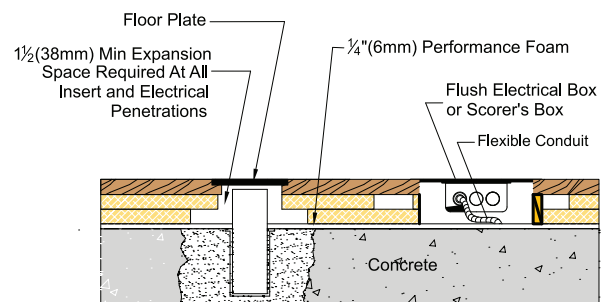
### WALL BASE



### THRESHOLD



### EQUIPMENT



It is the policy of Aacer Flooring to continuously improve its line of products. Therefore, Aacer Flooring reserves the right to change, modify or discontinue systems, specifications and accessories of all products at any time without notice or obligation to purchaser.

**AacerFlooring.com**

**(877) 582-1181**