



AACER

SPORTS FLOORING



PowerPlay™

A performance sports floor system with shock absorption and resilience at the highest value. This unique combination of high performance, economics and short installation time enhances athletic effectiveness in competition gymnasiums, multipurpose rooms and dance floors. Specify PowerPlay™ in a DIN certified version where maximum performance is essential.



Sweets.com

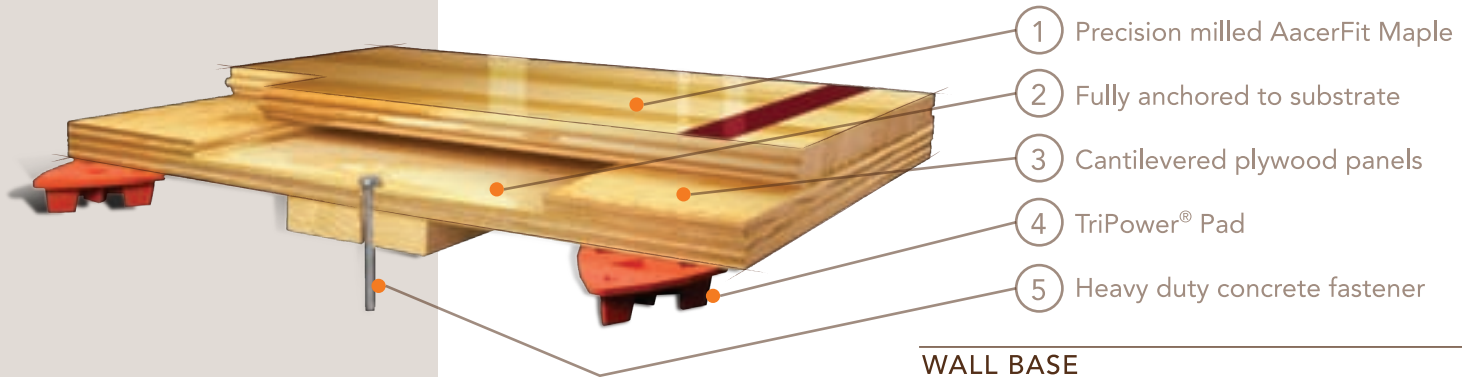


FIXED RESILIENT



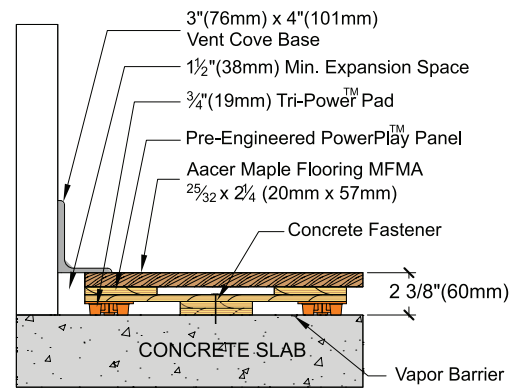
PowerPlay™

An anchored performance sports floor system consisting of vapor barrier, pre-engineered cushioned panels, and Acer maple flooring.

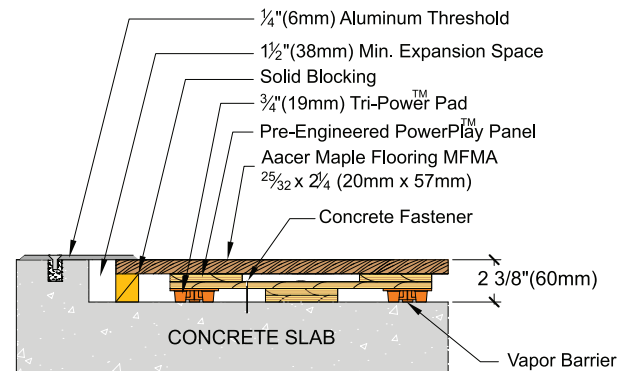


Anchorage	Drill and Pin / Shoot
Certified	
Green Status LEED Contributors	<p>FSC Maple - MRc7 FSC SubFloor Components - MRc7 EQ – 4.2 Regional Materials - MRc5.1 & 5.2</p>
Optional Versions	PowerPlay LP, VLP, II, *W, DIN
Resilience	TriPower, AcerFlex, AcerCush, EcoDin
Slab Depression	<p>3/8" (10mm) AcerCush Pad Powerplay VLP 25/32" (20mm) flooring - 1-7/8" (48mm) 33/32" (26mm) flooring - 2-1/8" (54mm)</p> <p>7/16" (11mm) EcoDin PowerPlay LP 25/32" (20mm) flooring - 2-1/8" (54mm) 33/32" (26mm) flooring - 2-3/8" (60mm)</p> <p>3/4" (19mm) TriPower Pad Power Play DIN 25/32" (20mm) flooring - 2-3/8" (60mm) 33/32" (26mm) flooring - 2-5/8" (67mm)</p>
Subfloor Construction	Pre manufactured panels
System Type	Fixed Resilient
Testing Laboratory	
U.S. Patent#	*Pending
Warranty	Lifetime available

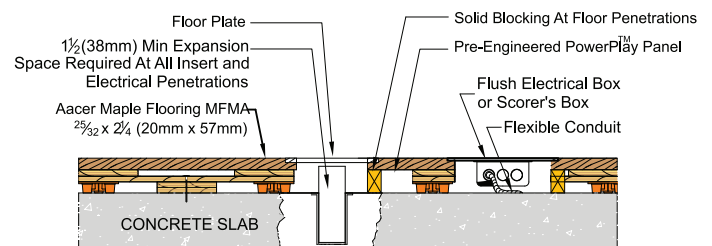
WALL BASE



THRESHOLD



EQUIPMENT



AacerFlooring.com (877) 582-1181

It is the policy of Aacer Flooring to continuously improve its line of products. Therefore, Aacer Flooring reserves the right to change, modify or discontinue systems, specifications and accessories of all products at any time without notice or obligation to purchaser.