

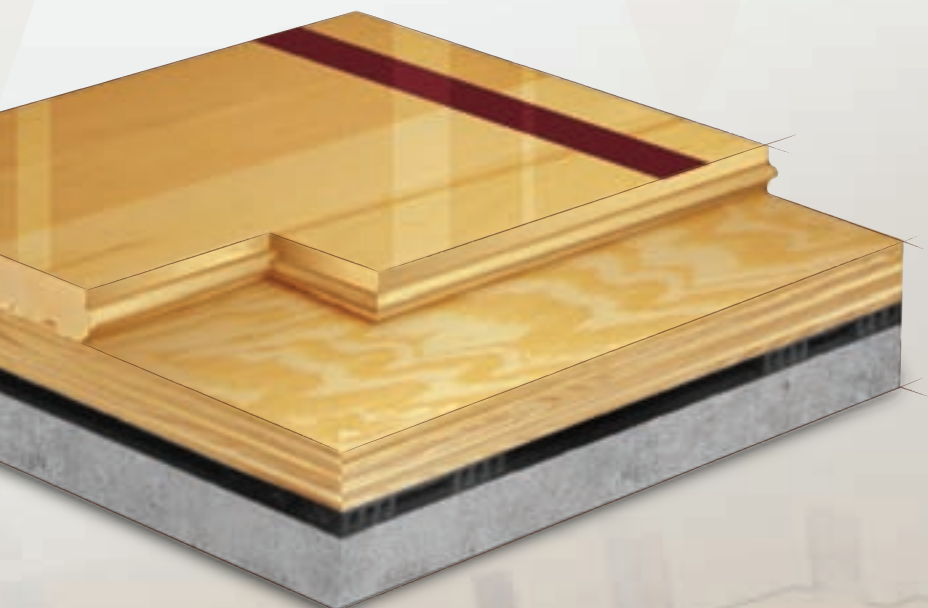


AACER

SPORTS FLOORING

AacerCush II

The AacerCush II floor system combines Aacer maple flooring with 2 layers of underlayment and resilient pads. The result is an economic, versatile athletic floor with increased shock absorbency and energy return that helps reduce injuries. This widely used floating sport floor system is ideal for field houses, gymnasiums, multi-purpose rooms and dance floors.



Sweets.com

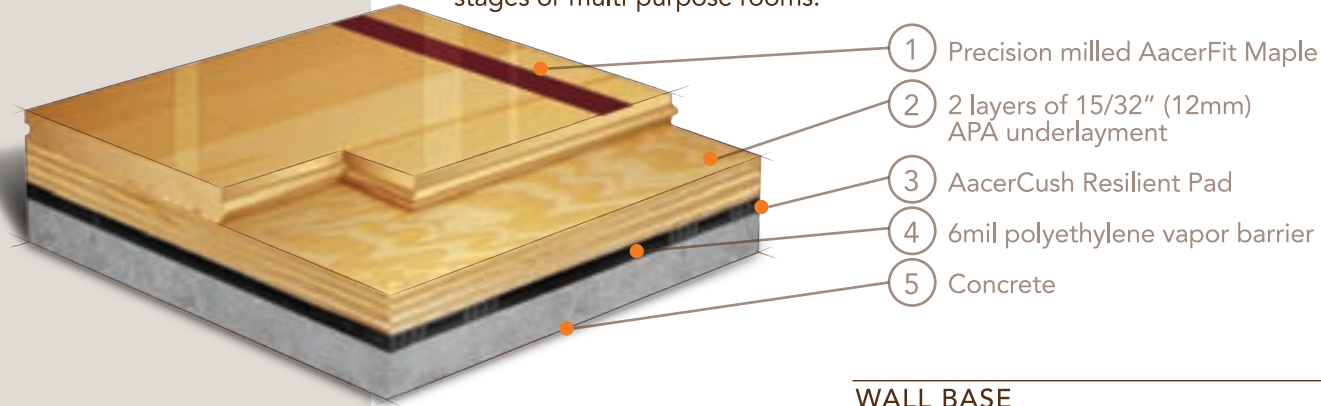


FLOATING



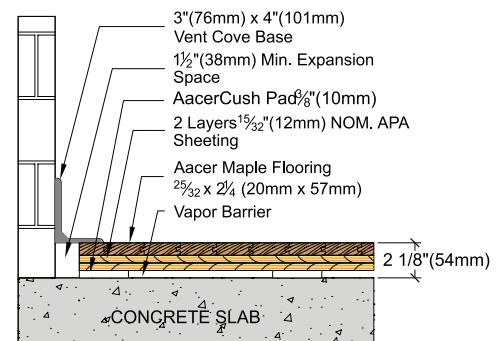
AacerCush II

Increased structural integrity, shock absorbency and energy return make the AacerCush II one of the most widely accepted athletic flooring systems for field houses, combination synthetic and wood facilities, gymnasiums, dance floors, stages or multi-purpose rooms.

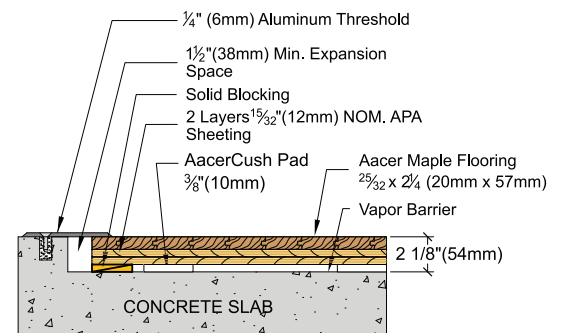


Certified*	
Green Status LEED Contributors	<p>FSC Maple - MRc7 FSC SubFloor Components - MRc7 EQ - 4.2 Regional Materials - MRc5.1 & 5.2</p>
Optional Versions	EcoDin, 1/4" and 1/2" Performance Foam, P3*
Resilience	AacerCush PVC Pads
Slab Depression	<p>3/8" (10 mm) PVC Pad 25/32" (20mm) flooring – 2 1/8" (54mm) 33/32" (26mm) flooring – 2 3/8" (60mm)</p> <p>7/16" (11mm) EcoDin Pad 25/32" (20mm) flooring – 2 1/8" (48mm) 33/32" (26mm) flooring – 2 7/8" (61mm)</p> <p>3/4" (20mm) P3 Pad 25/32" (20mm) flooring – 2 1/2" (64mm) 33/32" (26mm) flooring – 2 3/4" (70mm)</p>
Subfloor Construction	Plywood
System Type	Floating Floor System
Testing Laboratory	
Warranty	Lifetime available

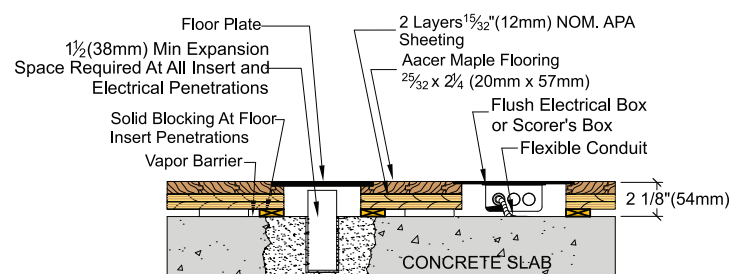
WALL BASE



THRESHOLD



EQUIPMENT



AacerFlooring.com (877) 582-1181

It is the policy of Aacer Flooring to continuously improve its line of products. Therefore, Aacer Flooring reserves the right to change, modify or discontinue systems, specifications and accessories of all products at any time without notice or obligation to purchaser.