

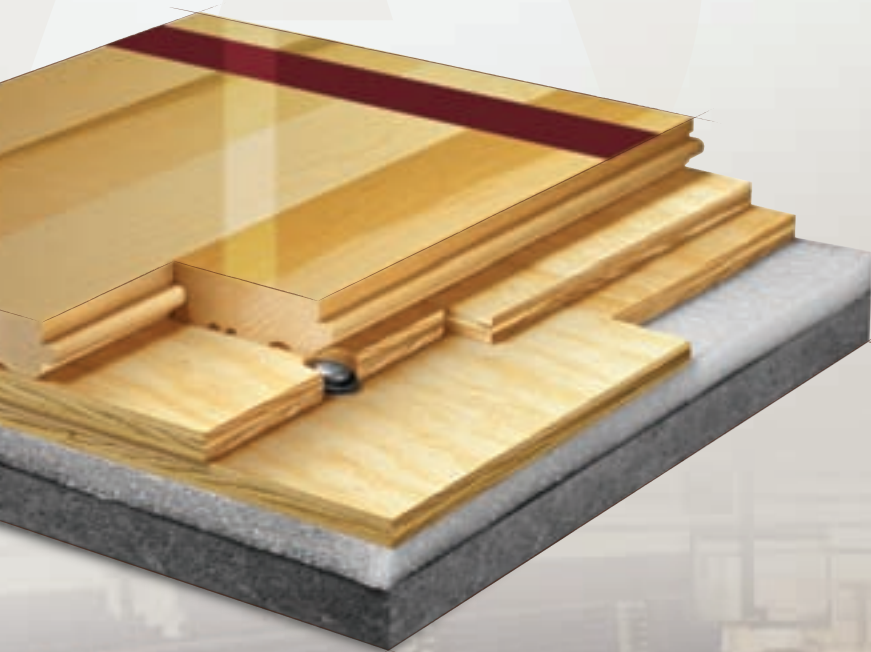


# AACER

SPORTS FLOORING

## AacerChannel™ VLP

The AacerChannel™ VLP performance sports floor system provides the resiliency and safety of a floating floor and the stability of an anchored system. The floor's 100% factory assembled panels ensure uniform performance and fast installation making it ideal for facility retrofit projects and facilities requiring lower profile systems. AacerChannel™ VLP is fully EN14904 and DIN18032-2 certified.



Sweets.com

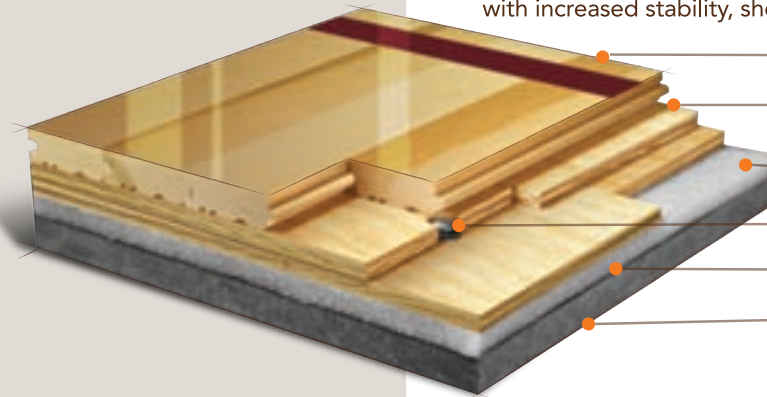


# FIXED RESILIENT



## AacerChannel™ VLP

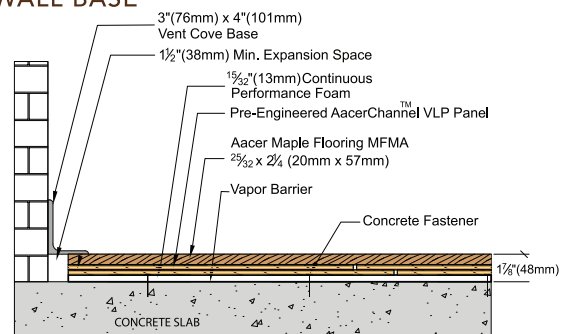
The AacerChannel™ VLP is a fixed resilient sports performance floor system that features a monolithic subfloor with full flex and a full-thickness APA engineered underlayment to maximize system performance. The result is a DIN certified floor with increased stability, shock absorbency, energy return and **low vibration**.



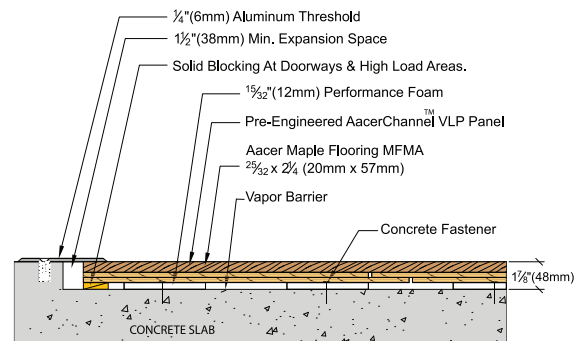
- 1 Precision milled AacerFit Maple
- 2 Integrated Panels form a monolithic subfloor
- 3 Performance Foam
- 4 Collared steel drive pin
- 5 6mil polyethylene vapor barrier
- 6 Concrete

Anchorage	Drill and Pin
Certified	
Green Status LEED Contributors	<p>FSC Maple - MRc7 FSC SubFloor Components - MRc7 EQ - 4.2 Regional Materials - MRc5.1 &amp; 5.2</p>
Optional Versions	Channeled foam, 12mm Tri Power Pad
Resilience	Performance Foam
Slab Depression	<b>1/2" (12mm) Performance Foam</b> 25/32" (20mm) flooring – 1 7/8" (48mm) 33/32" (26mm) flooring – 2 1/8" (54mm)
Subfloor Construction	Pre manufactured pannels
System Type	Fixed Resilient
Testing Laboratory	
U.S. Patent#	# 5,647,183
Warranty	Lifetime available

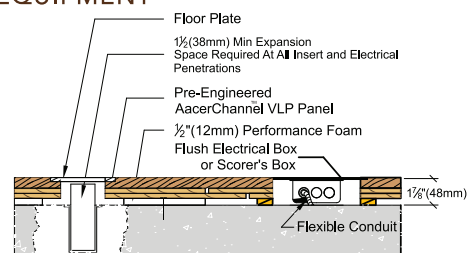
### WALL BASE



### THRESHOLD



### EQUIPMENT



**AacerFlooring.com**

**(877) 582-1181**

It is the policy of Aacer Flooring to continuously improve its line of products. Therefore, Aacer Flooring reserves the right to change, modify or discontinue systems, specifications and accessories of all products at any time without notice or obligation to purchaser.