



AACER

SPORTS FLOORING

ScissorLoc™

Aacer ScissorLoc's criss-cross solid wood sub floor creates a dimensionally stable system with excellent natural ventilation capabilities. The option of the PowerVent™ Airflow system adds a feature which will detect moisture and start drying the system with mechanical airflow.



Sweets.com

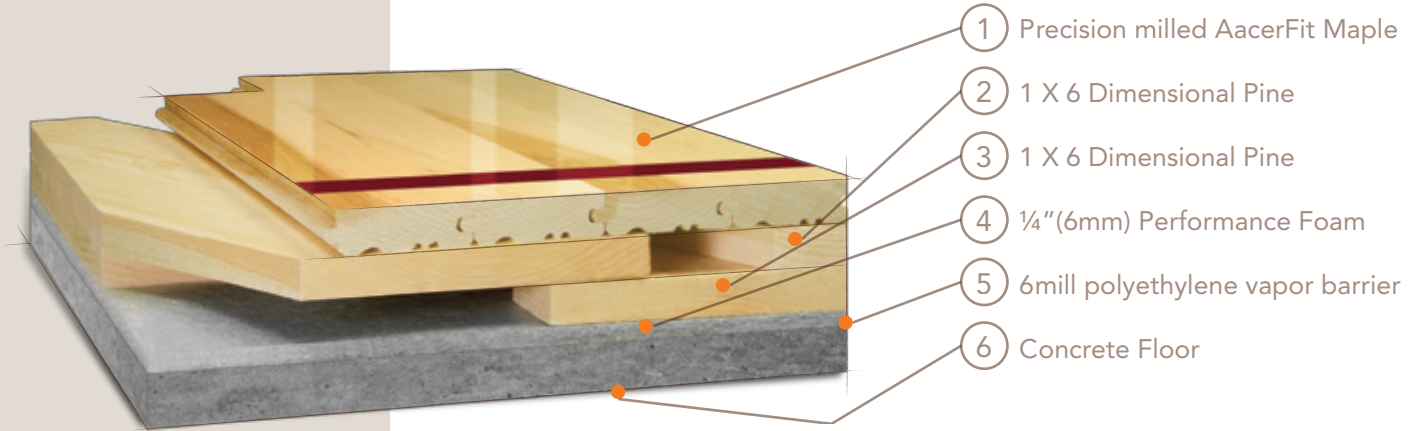


FLOATING



ScissorLoc™

Available are these ScissorLoc™ Floor Systems: I, II, III, DC and LP.



Certified



Green Status
LEED Contributors



FSC Maple - MRc7
FSC SubFloor Components - MRc7
EQ - 4.2
Regional Materials MRc5.1 & 5.2

Optional Versions

I, II, III, DC, LP, Powervent™

Resilience

Performance Foam

Slab Depression

ScissorLoc™, I, II, D.C.
25/32" (20 mm) flooring - 2 1/2" (64mm)
33/32" (26 mm) flooring - 2 3/4" (70mm)

ScissorLoc™ LP
25/32" (20 mm) flooring - 2" (51mm)
33/32" (26 mm) flooring - 2 1/4" (57mm)

ScissorLoc™ III
25/32" (20 mm) flooring - 3" (76mm)
33/32" (26 mm) flooring - 3 1/4" (83mm)

Retrofit

System maybe adjusted to fit any slab profile

Subfloor Construction

Solid Pine

System Type

Floating System

Testing Laboratory



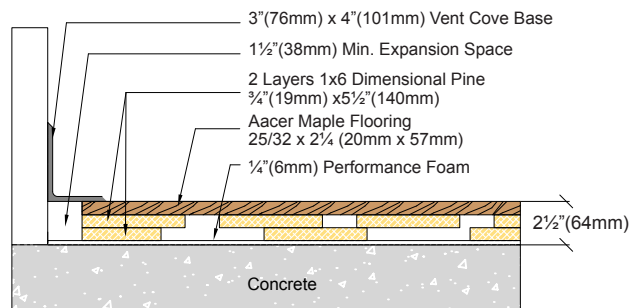
U.S. Patent#

#5,299,401

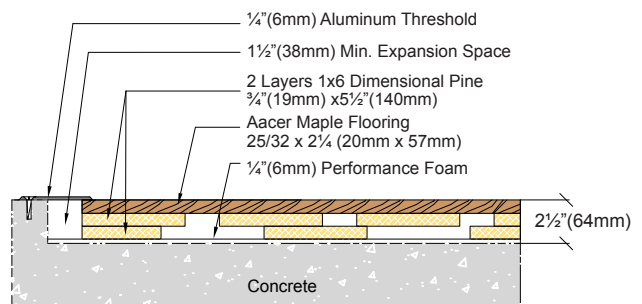
Warranty

Lifetime available

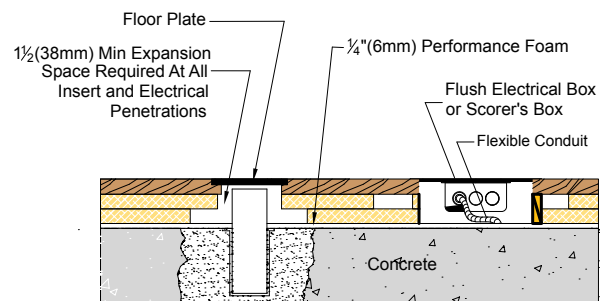
WALL BASE



THRESHOLD



EQUIPMENT



AacerFlooring.com

(877) 582-1181

It is the policy of Aacer Flooring to continuously improve its line of products. Therefore, Aacer Flooring reserves the right to change, modify or discontinue systems, specifications and accessories of all products at any time without notice or obligation to purchaser.