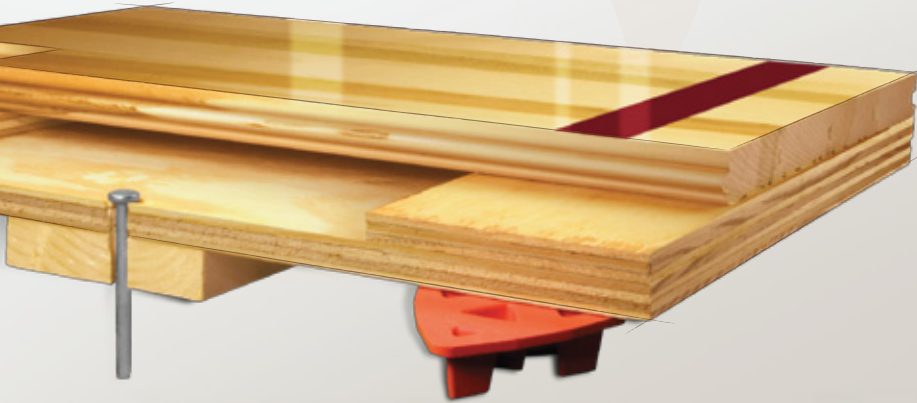




# AACER

SPORTS FLOORING



## PowerPlay™

A performance sports floor system with shock absorption and resilience at the highest value. This unique combination of high performance, economics and short installation time enhances athletic effectiveness in competition gymnasiums, multipurpose rooms and dance floors. Specify PowerPlay™ in a DIN certified version where maximum performance is essential.



Sweets.com

iHRSA

SMARTWOOD  
Certified Forestry

NIRSA

FSC

Member  
NATFA

MEMBER  
AMERICAN  
SPORTS BUILDERS  
ASSOCIATION

FIBA  
OFFICIAL  
FLOOR

AMERICAN  
SPORTS BUILDERS  
ASSOCIATION

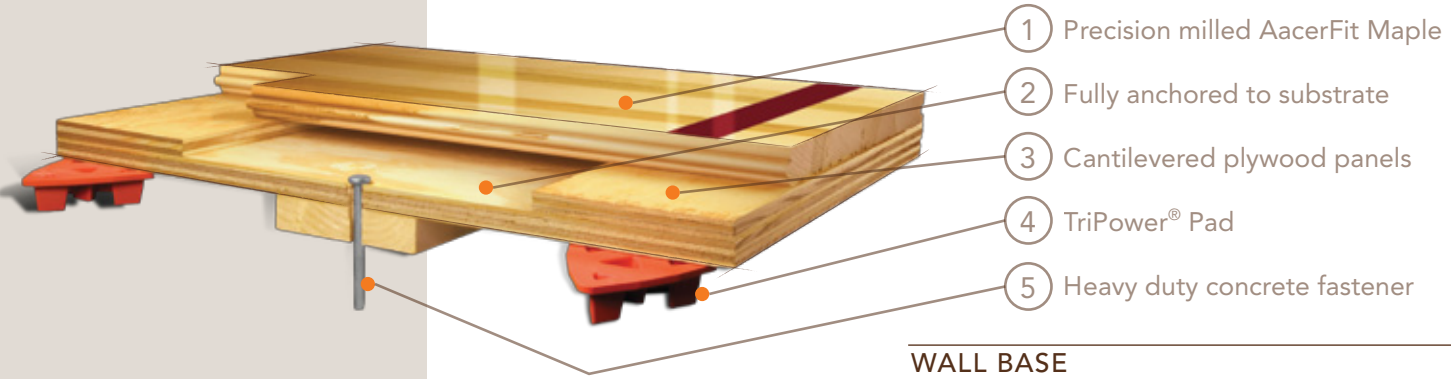
AMERICAN  
SPORTS BUILDERS  
ASSOCIATION

AMERICAN  
SPORTS BUILDERS  
ASSOCIATION



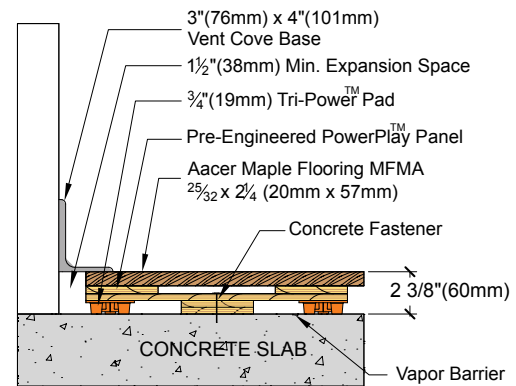
## PowerPlay™

An anchored performance sports floor system consisting of vapor barrier, pre-engineered cushioned panels, and Acer maple flooring.

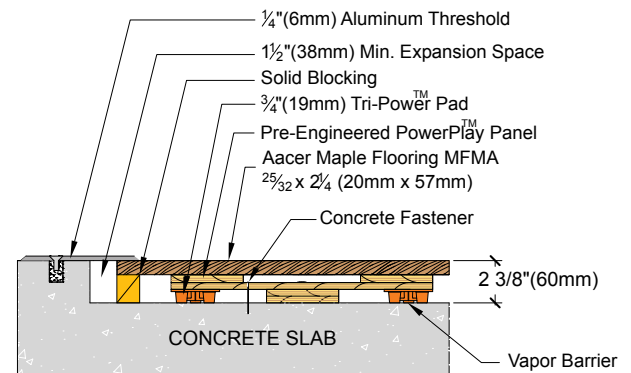


Anchorage	Drill and Pin / Shoot
Certified	
Green Status LEED Contributors	<p>FSC Maple - MRc7 FSC SubFloor Components - MRc7 EQ - 4.2 Regional Materials - MRc5.1 &amp; 5.2</p>
Optional Versions	PowerPlay LP, VLP, II, *W, DIN
Resilience	TriPower, AcerFlex, AcerCush, EcoDin
Slab Depression	<p><b>1/2" (14mm) EcoDin PowerPlay LP</b> 25/32" (20mm) flooring - 2-1/8" (54mm) 33/32" (26mm) flooring - 2-3/8" (60mm)</p> <p><b>3/8" (10mm) AcerCush Pad PowerPlay VLP</b> 25/32" (20mm) flooring - 1-7/8" (48mm) 33/32" (26mm) flooring - 2-1/8" (54mm)</p> <p><b>3/4" (20mm) TriPower Pad Power Play DIN</b> 25/32" (20mm) flooring - 2-3/8" (60mm) 33/32" (26mm) flooring - 2-5/8" (67mm)</p>
Subfloor Construction	Pre manufactured panels
System Type	Fixed Resilient
Testing Laboratory	
U.S. Patent#	*Pending
Warranty	Lifetime available

### WALL BASE



### THRESHOLD



### EQUIPMENT

