



# AACER

SPORTS FLOORING



## Anchored PowerSleeper™ SE

Aacer's Anchored PowerSleeper™ SE is a system that fully engages the resilient pad inside a steel channel, ensuring uniform performance and increased structural stability. It is suitable for new and retrofit sports floor applications and commercial projects.



Sweets.com

iHRSA

SMARTWOOD  
Certified Forestry

NIRSA

FSC

Member  
NATFA

Member  
AMERICAN  
SPORTS BUILDERS  
ASSOCIATION

FIBA  
OFFICIAL  
PARTNER

AFSA  
MEMBER

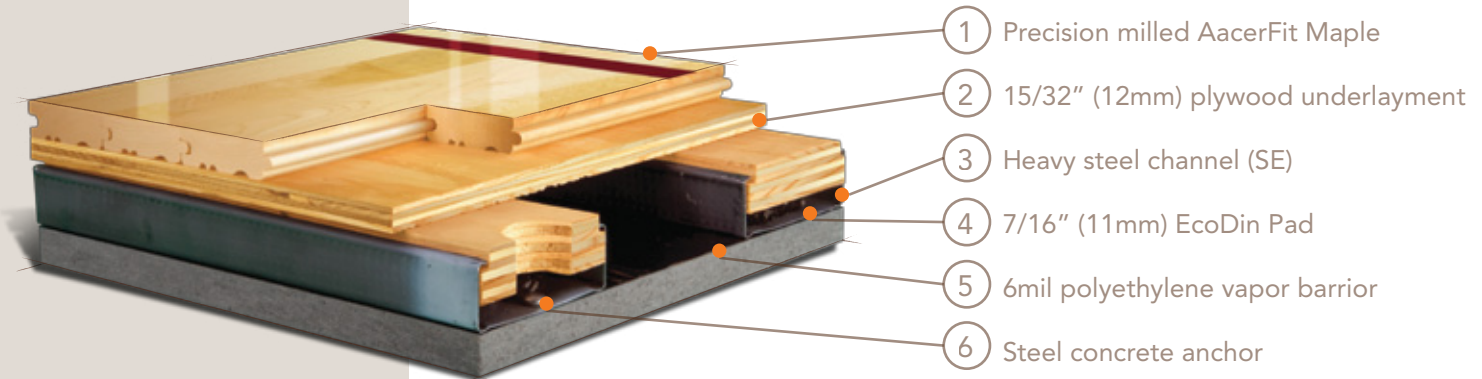
CONSTRUCTION  
SOLUTIONS

CONTINUING EDUCATION  
IAA



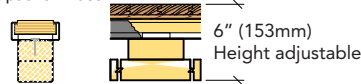
## Anchored PowerSleeper™ SE

Anchored PowerSleeper™ SE is the perfect uniform, stable floor system for new and retro fit projects. This floor system is fully shimable for uneven substrats.

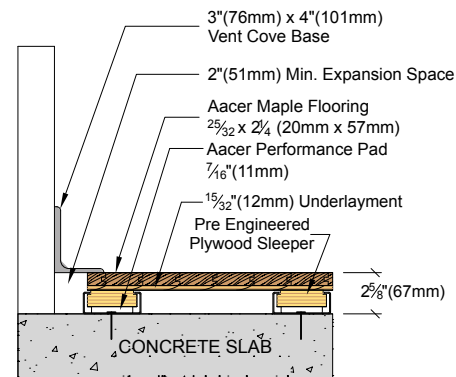


Anchorage	Drill and Pin
Certified	
Green Status LEED Contributors	<p>FSC Maple - MRc7 FSC SubFloor Components - MRc7 EQ - 4.2 Regional materials MRc5.1&amp;5.2</p>
Resilience	EcoDin, TriPower
Slab Depression	<b>7/16" (11 mm) EcoDin Pads</b> 25/32" (20 mm) flooring - 2 5/8" (67 mm) 33/32" (26 mm) flooring - 2 5/8" (73mm)
Subfloor Construction	Sleeper Plywood
System Type	Fixed Resilient / Floating
Testing Laboratory	
Warranty	Lifetime available
*Option	Retrofit with optional Truss easily adjusted to required slab depressions

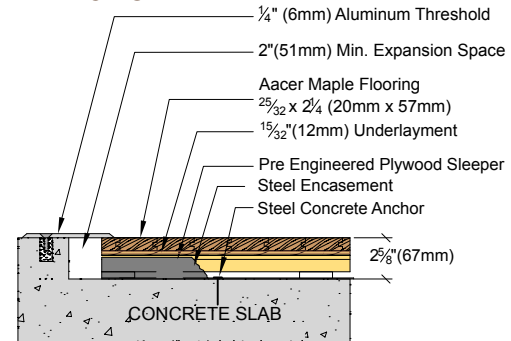
\*Optional Truss



### WALL BASE



### THRESHOLD



### EQUIPMENT

