



AACER

SPORTS FLOORING



Anchored PowerSleeper™ DIN

Anchored PowerSleeper™ DIN is an anchored system that fully engages the resilient pad ensuring uniform performance and increased structural stability. This system combines pre-engineered sleepers with a plywood underlayment for greater dimensional strength and stability. It is suitable for new and retrofit sports floor applications and commercial projects.



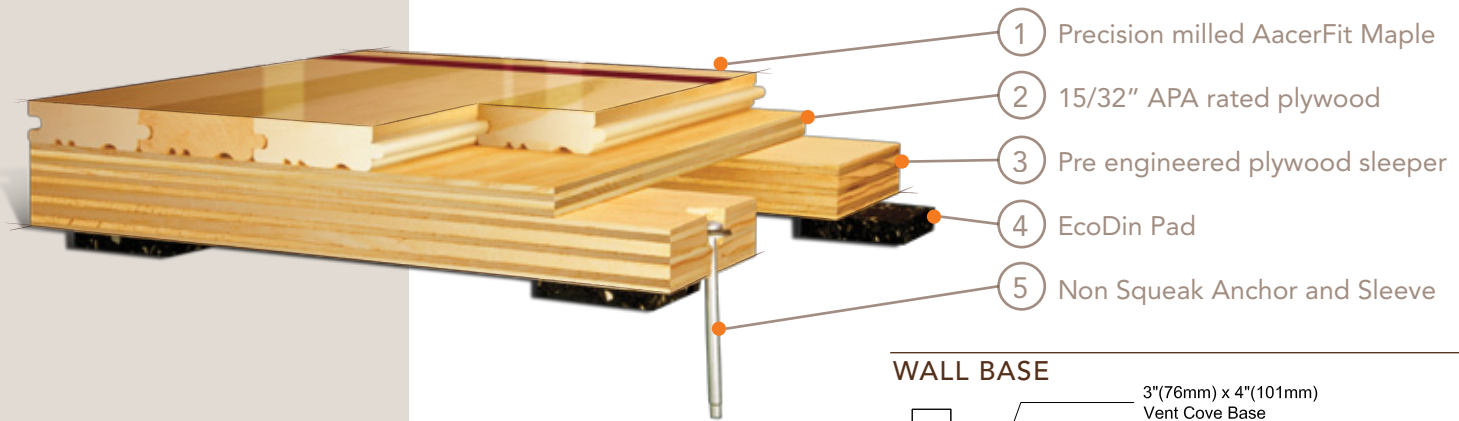
Sweets.com





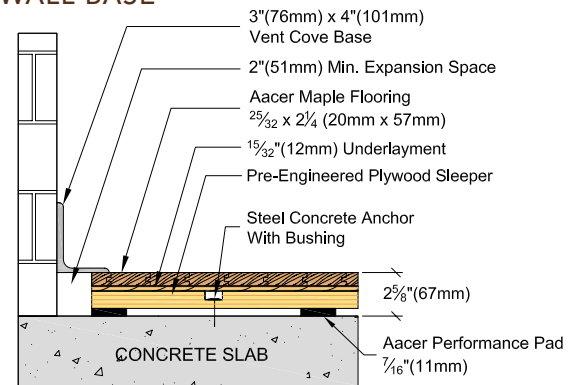
Anchored PowerSleeper™ DIN

Anchored PowerSleeper™ DIN is the perfect, traditional basketball floor where maximum performance and structural integrity are essential.

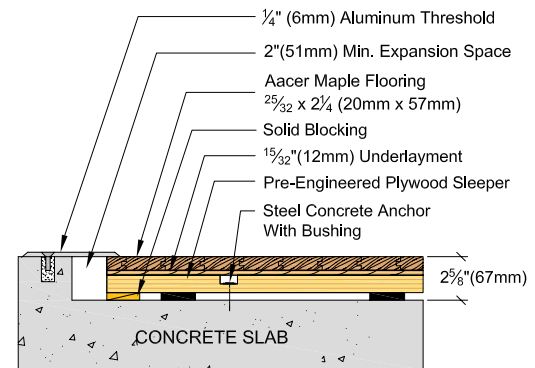


Anchorage	Drill and Pin
Certified	
Green Status LEED Contributors	<p>FSC Maple - MRc7 FSC SubFloor Components - MRc7 EQ - 4.2 Regional materials - MRc5.1 & 5.2</p>
Resiliency	EcoDin
Slab Depression	<p>1/2" (11 mm) EcoDin Pads</p> <p>25/32" (20mm) flooring - 2 5/8" (67mm)</p> <p>33/32" (26mm) flooring - 2 7/8" (73mm)</p>
Subfloor Construction	Sleeper Plywood
System Type	Fixed Resilient
Testing Laboratory	
U.S. Patent#	Pending
Warranty	Lifetime available

WALL BASE



THRESHOLD



EQUIPMENT

