



# AACER

SPORTS FLOORING

## AacerChannel®

A high performance sports floor system with the resiliency and safety of a floating floor and the stability of an anchored system. This unique combination is ideal for large field house and combination wood and synthetic facilities.



Sweets.com

ihrsa

SMARTWOOD  
Certified Forestry

NIRSA

FSC

Member  
NATFA

MEMBER  
AMERICAN  
SPORTS BUILDERS  
ASSOCIATION

FIBA  
OFFICIAL COURT  
FLOOR

MEMBER  
NATFA

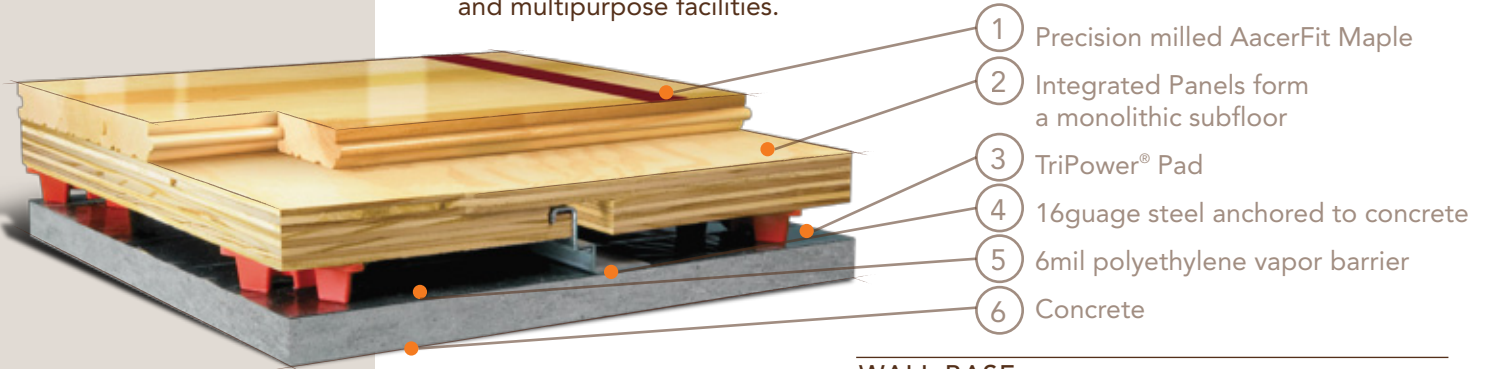
MEMBER  
NATFA

CONTINUING EDUCATION  
NATFA



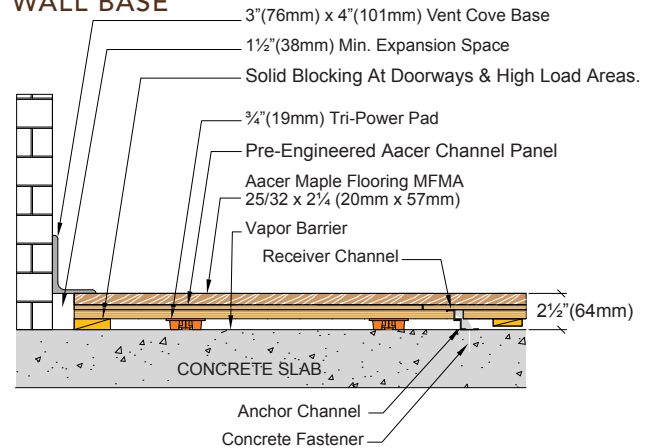
## AacerChannel®

AacerChannel® enhances performance in gymnasiums, dance floors and multipurpose facilities.

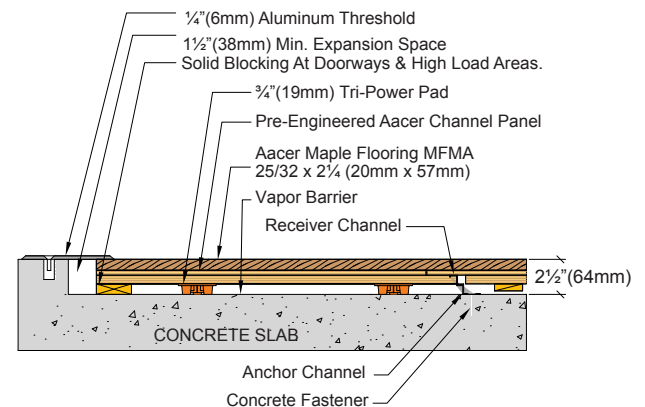


Anchorage	Steel Channel
Certified	
Green Status LEED Contributors	<p>FSC Maple - MRc7 FSC SubFloor Components - MRc7 EQ - 4.2 Regional Materials - MRc5.1 &amp; 5.2</p>
Optional Versions	AacerChannel V.L.P
Resilience	TriPower Pads
Slab Depression	<p><b>¾" (20 mm) TriPower Pads</b> 25/32" (20 mm) flooring - 2 ½" (64mm) 33/32" (26 mm) flooring - 2 ¾" (70mm)</p> <p><b>½" (13mm) VLP Performance Foam</b> 25/32" (20 mm) flooring - 1 ½" (48mm) 33/32" (26 mm) flooring - 2 ½" (54mm)</p>
Subfloor Construction	Pre manufactured panels
System Type	Fixed Resilient
Testing Laboratory	
U.S. Patent#	# 5,647,183
Warranty	Lifetime available

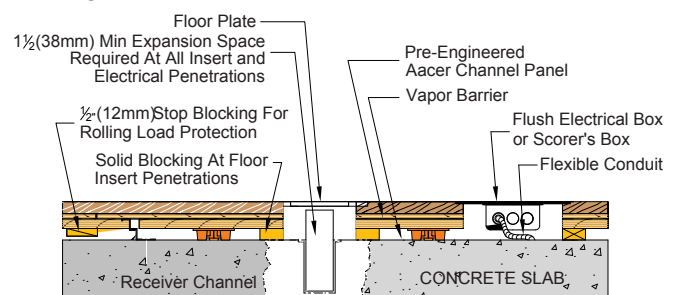
### WALL BASE



### THRESHOLD



### EQUIPMENT



AacerFlooring.com

(877) 582-1181

It is the policy of Aacer Flooring to continuously improve its line of products. Therefore, Aacer Flooring reserves the right to change, modify or discontinue systems, specifications and accessories of all products at any time without notice or obligation to purchaser.