

# AacerCush I Anchored

## FIXED RESILIENT SYSTEMS

Resilience, low cost and ease of installation make AacerCush I Anchored one of the most widely utilized athletic floors. AacerCush I Anchored is ideal for racquetball and squash courts, stage floors, gymnasiums and multipurpose rooms.

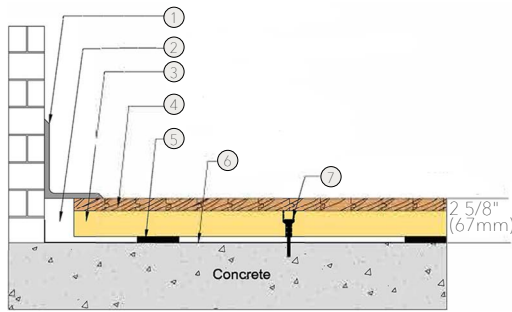


# AcerCush I Anchored



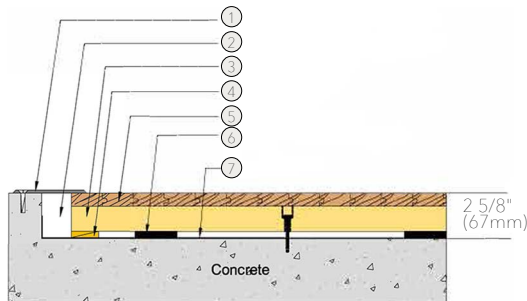
- 1. Precision-milled Acer Maple
- 2. 2" x 3" (38mm x 64mm) AcerCush Sleeper
- 3. 3/8" (10mm) AcerCush Pad

## WALL BASE



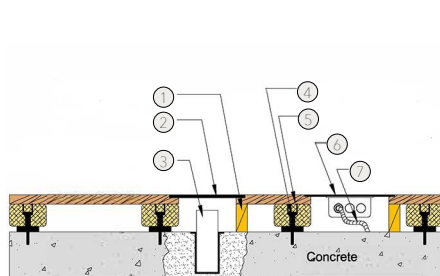
- 1. 3" x 4" (76mm x 101mm) Vent Cove Base
- 2. 1 1/2" (38mm) Min. Expansion Space
- 3. AcerCush Sleeper
- 4. MFMA Maple Flooring 25/32" x 2 1/4" (20mm x 57mm)
- 5. 3/8" (10mm) AcerCush Pad
- 6. Vapor Barrier
- 7. Steel Drive Pin with Rubber Coating Bushing

## THRESHOLD



- 1. 1/4" (6mm) Aluminum Threshold
- 2. 1 1/2" (38mm) Min. Expansion Space
- 3. AcerCush Sleeper
- 4. Solid Blocking
- 5. MFMA Maple Flooring 25/32" x 2 1/4" (20mm x 57mm)
- 6. 3/8" (10mm) AcerCush Pad
- 7. Vapor Barrier

## EQUIPMENT



- 1. Solid Blocking at Floor Insert Penetrations
- 2. Floor Plate
- 3. 1 1/2" (38mm) Min. Expansion Space Required at all Insert & Electrical Penetrations
- 4. AcerCush Sleeper
- 5. MFMA Maple Flooring 25/32" x 2 1/4" (20mm x 57mm)
- 6. Flush Electrical Box or Scorer's Box
- 7. Flexible Conduit

Certified



Green Status and LEED Contributors



- FSC® Certified Maple - MRc7
- FSC® Certified Subfloor Components - MRc7
- EQ - 4.2
- Regional Materials - MRc5.1 & 5.2

Resilience

3/8" (10mm) and 5/8" (16mm) AcerCush Pad  
\*other pad options available

Slab Depression

3/8" (10mm) AcerCush Pad  
• 25/32" (20mm) flooring – 2 5/8" (67mm)  
• 33/32" (26mm) flooring – 2 7/8" (73mm)

5/8" (16mm) AcerCush Pad  
• 25/32" (20mm) flooring – 2 7/8" (73mm)  
• 33/32" (26mm) flooring – 3 1/8" (80mm)

Subfloor Construction

Sleeper

System Type

Fixed Resilient

Testing Laboratory



Warranty

Lifetime available

*It is the policy of Acer Flooring to continuously improve its line of products. Therefore, Acer Flooring reserves the right to change, modify or discontinue systems, specifications and accessories of all products at any time without notice or obligation to purchaser.*



see us at  
**Sweets.com**

