

AacerCush I+ Anchored

FIXED RESILIENT SYSTEMS

AacerCush I+ Anchored is a shock absorbent variable profile system. This system combines sleepers with a plywood layer for greater dimensional strength. This system is ideal for new and retrofit commercial and athletic applications.

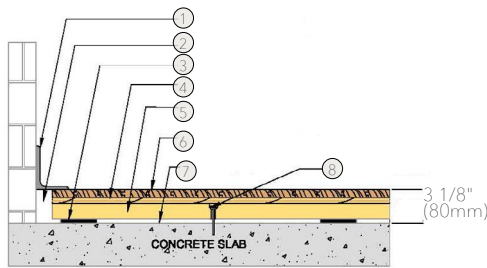


AacerCush I+ Anchored



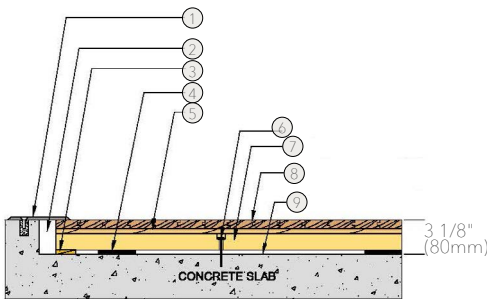
- 1. Precision-milled Acer Maple
- 2. Layer of 15/32" (12mm) or 23/32" (20mm) NOM. Exposure 1, APA Rated Sheathing
- 3. 2" x 3" (38mm x 64mm) AcerCush Sleeper
- 4. 3/8" (10mm) AcerCush Pad

WALL BASE



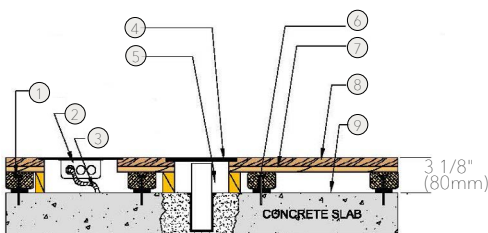
- 1. 3" x 4" (76mm x 101mm) Vent Cove Base
- 2. 1 1/2" (38mm) Min. Expansion Space
- 3. 3/8" (10mm) AcerCush Pad
- 4. 15/32" (12mm) NOM. Exposure 1 APA rated Sheathing
- 5. AcerCush Sleeper
- 6. MFMA Maple Flooring 25/32" x 2 1/4" (20mm x 57mm)
- 7. Vapor Barrier
- 8. Steel Concrete Anchor

THRESHOLD



- 1. 1/4" (6mm) Aluminum Threshold
- 2. 1 1/2" (38mm) Min. Expansion Space
- 3. Solid Blocking
- 4. 3/8" (10mm) AcerCush Pad
- 5. 15/32" (12mm) NOM. Exposure 1 APA rated Sheathing
- 6. Steel Concrete Anchor
- 7. AcerCush Sleeper
- 8. MFMA Maple Flooring 25/32" x 2 1/4" (20mm x 57mm)
- 9. Vapor Barrier

EQUIPMENT



- 1. AcerCush Sleeper
- 2. Flush Electrical Box or Scorer's Box
- 3. Flexible Conduit
- 4. Floor Plate
- 5. 1 1/2" (38mm) Min. Expansion Space Required at all Insert & Electrical Penetrations
- 6. 3/8" (10mm) AcerCush Pad
- 7. 15/32" (12mm) NOM. Exposure 1 APA rated Sheathing
- 8. MFMA Maple Flooring 25/32" x 2 1/4" (20mm x 57mm)
- 9. Vapor Barrier

Certified



Green Status and LEED Contributors



- FSC® Certified Maple - MRc7
- FSC® Certified Subfloor Components - MRc7
- EQ - 4.2
- Regional Materials - MRc5.1 & 5.2

Resilience

3/8" (10mm) and 5/8" (16mm) AcerCush Pad
*other pad options available

Slab Depression

3/8" (10mm) AcerCush Pad
• 25/32" (20mm) flooring – 3 1/8" (80mm)
• 33/32" (26mm) flooring – 3 3/8" (86mm)

5/8" (16mm) AcerCush Pad

- 25/32" (20mm) flooring – 3 3/8" (86mm)
- 33/32" (26mm) flooring – 3 5/8" (92mm)

Subfloor Construction

Sleeper Plywood

System Type

Fixed Resilient

Testing Laboratory



Warranty

Lifetime available

It is the policy of Aacer Flooring to continuously improve its line of products. Therefore, Aacer Flooring reserves the right to change, modify or discontinue systems, specifications and accessories of all products at any time without notice or obligation to purchaser.



see us at Sweets.com

