

# UltraFlex™ DC

## FIXED RESILIENT SYSTEMS

UltraFlex™ DC is an anchored resilient floor system combining the best features of both designs. UltraFlex™ DC features a unique ladder subfloor that provides high performance play and a stable platform for the maple surface. This system, when selected with fully FSC® Certified components, contributes the maximum LEED points available.





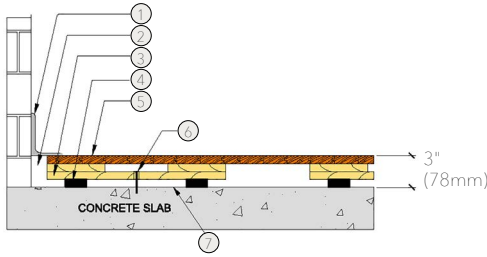
# UltraFlex™ DC

The UltraFlex™ DC system utilizes dimensional wood subfloor which absorbs shock and reduces leg fatigue. The subfloor design also allows for excellent under floor air flow.



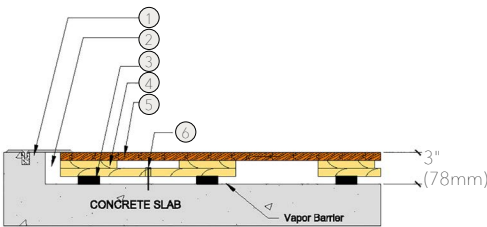
- 1. Precision-milled Acer Maple
- 2. Dimensional Pine Panels
- 3. 3/4" (19mm) Blue TriPower™ Pad
- 4. Heavy-duty Concrete Anchor

## WALL BASE



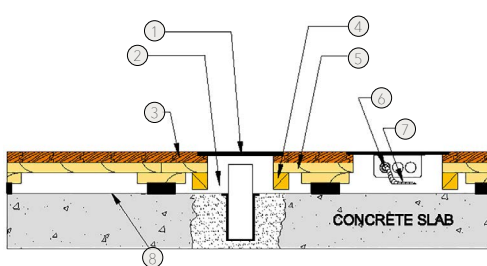
- 1. 3" x 4" (76mm x 101mm) Vent Cove Base
- 2. 1 1/2" (38mm) Min. Expansion Space
- 3. Pre-Engineered UltraFlex Panel
- 4. 3/4" (19mm) Resilient Pad
- 5. MFMA Maple Flooring 25/32" x 2 1/4" (20mm x 57mm)
- 6. Concrete Fastener
- 7. Vapor Barrier

## THRESHOLD



- 1. 1/4" (6mm) Aluminum Threshold
- 2. 1 1/2" (51mm) Min. Expansion Space
- 3. 3/4" (19mm) Resilient Pad
- 4. Pre-Engineered UltraFlex Panel
- 5. MFMA Maple Flooring 25/32" x 2 1/4" (20mm x 57mm)
- 6. Concrete Fastener

## EQUIPMENT



- 1. Floor Plate
- 2. 1 1/2" (38mm) Min. Expansion Space Required at all Insert & Electrical Penetrations
- 3. MFMA Maple Flooring 25/32" x 2 1/4" (20mm x 57mm)
- 4. Solid Blocking at Floor Insert Penetration
- 5. Pre-Engineered UltraFlex Panel
- 6. Flush Electrical Box or Scorer's Box
- 7. Flexible Conduit
- 8. Vapor Barrier

Anchorage

Certified

Green Status and LEED Contributors

Resilience

Optional Version

Slab Depression

Subfloor Construction

System Type

Testing Laboratory

U.S. Patent #

Warranty

Drill and Pin



- FSC® Certified Maple - MRC7
- FSC® Certified Subfloor Components - MRC7
- EQ - 4.2
- Regional Materials - MRC5.1 & 5.2

3/4" (19mm) Blue TriPower™ Pad

Other pad options available. Contact your Regional Sales Manager.

3/4" (19mm) TriPower™ Pads

- 25/32" (20mm) flooring – 3" (78mm)
- 33/32" (26mm) flooring – 3 1/4" (84mm)

Solid Dimensional Pine (FSC)

Fixed Resilient / Floating



UltraFlex DC with Pin  
U.S. Patent #6,557,314 B2

Lifetime available

*It is the policy of Acer Flooring to continuously improve its line of products. Therefore, Acer Flooring reserves the right to change, modify or discontinue systems, specifications and accessories of all products at any time without notice or obligation to purchaser.*



see us at  
**Sweets.com**

