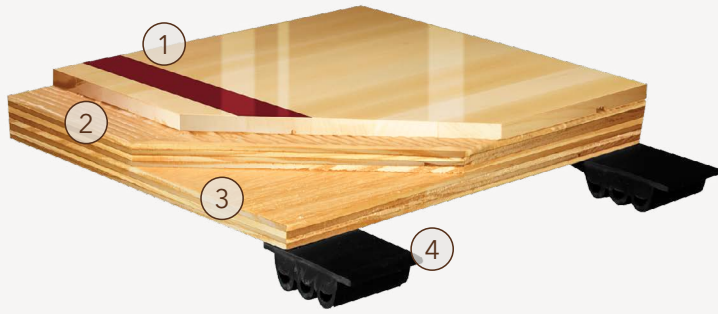


# SuperBond Flex™

## FLOATING SYSTEMS

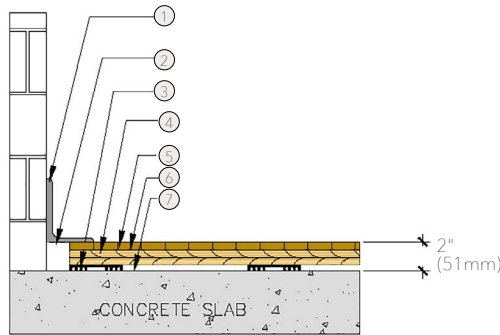
SuperBond Flex™ is a mastic set edge-grain maple parquet adhered to a floating subfloor system. Used in sport floor applications where system height is a factor.





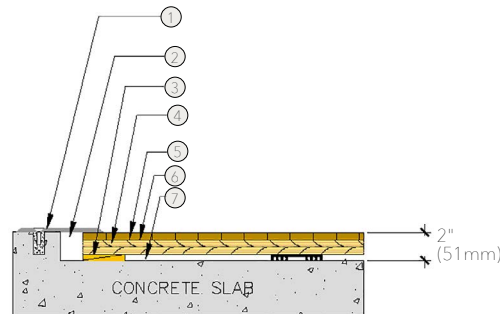
- 1. 1/2" (12mm) Maple SuperBond™ Flooring
- 2. Elastomeric Glue
- 3. (2) Layers of 15/32" (12mm) NOM. Exposure 1, APA Rated Sheathing
- 4. 3/4" (19mm) Resilient Pads

## WALL BASE



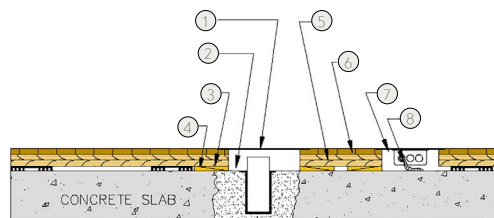
- 1. 3" x 4" (76mm x 101mm) Vent Cove Base
- 2. 1 1/2" (38mm) Min. Expansion Space Required
- 3. 3/8" (10mm) Performance Pad
- 4. (2) Layers 15/32" (12mm) NOM. Exposure 1, APA Rated Sheathing
- 5. 1/2" (12mm) MFMA Aacer Maple
- 6. Elastomeric Glue
- 7. Vapor Barrier

## THRESHOLD



- 1. 1/4" (6mm) Aluminum Threshold
- 2. 1 1/2" (38mm) Min. Expansion Space Required
- 3. Solid Blocking
- 4. (2) Layers 15/32" (12mm) NOM. Exposure 1, APA Rated Sheathing
- 5. 1/2" (12mm) MFMA Aacer Maple
- 6. Elastomeric Glue
- 7. Vapor Barrier

## EQUIPMENT



- 1. Floor Plate
- 2. 1 1/2" (38mm) Min. Expansion Space Required
- 3. Solid Blocking at Floor Insert Penetrations
- 4. Vapor Barrier
- 5. (2) Layers 15/32" (12mm) NOM. Exposure 1, APA Rated Sheathing
- 6. 1/2" (12mm) MFMA Aacer Maple
- 7. Flush Electrical Box or Scorer's Box
- 8. Flexible Conduit

Certified



Green Status and LEED Contributors



- FSC® Certified Maple - MRc7
- FSC® Certified Subfloor Components - MRc7
- EQ - 4.2
- Regional Materials - MRc5.1 & 5.2

Resilience

AacerFlex, EcoDIN, TriPower™, AacerCush, Foam Pads

Slab Depression

- 3/4" (19mm) EPDM Pads
- 1/2" (12mm) flooring - 2 1/4" (57mm)
- 7/16" (10mm) EcoDIN Pads
- 1/2" (12mm) flooring - 2" (51mm)

Subfloor Construction

Plywood

System Type

Floating

Testing Laboratory



Warranty

Lifetime available

*It is the policy of Aacer Flooring to continuously improve its line of products. Therefore, Aacer Flooring reserves the right to change, modify or discontinue systems, specifications and accessories of all products at any time without notice or obligation to purchaser.*



see us at [Sweets.com](http://Sweets.com)

