

SuperBond™

FIXED SYSTEMS

SuperBond™ is a mastic set edge-grain maple parquet which is usually adhered directly to a concrete substrate. The low profile makes it ideal for retrofit and commercial projects. It is not generally used for sport applications.





- 1. Maple SuperBond™ Flooring
- 2. Elastomeric Glue
- 3. Concrete

Green Status and LEED Contributors



- FSC® Certified Maple - MRc7
- EQ - 4.2

Optional Versions

1/2" (12mm) Flooring

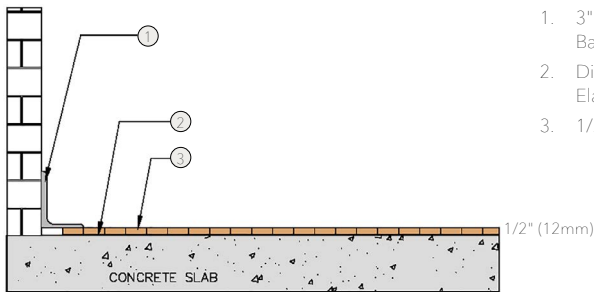
System Type

Fixed

Warranty

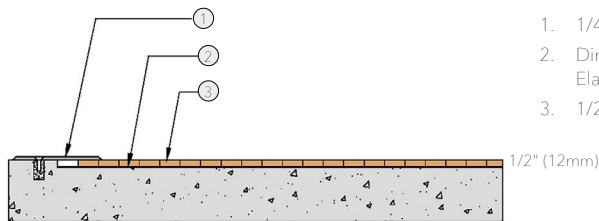
Lifetime available

WALL BASE



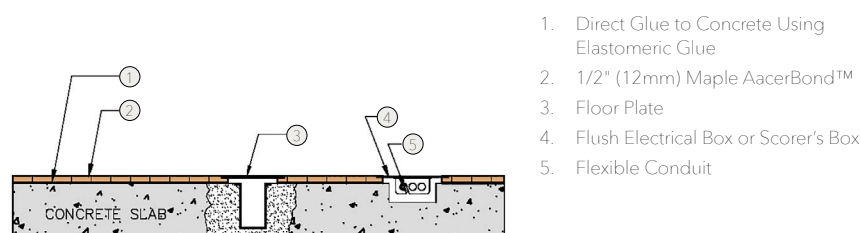
- 1. 3" x 4" (76mm x 101mm) Vent Cove Base
- 2. Direct Glue to Concrete Using Elastomeric Glue
- 3. 1/2" (12mm) Maple SuperBond™

THRESHOLD



- 1. 1/4" (6mm) Aluminum Threshold
- 2. Direct Glue to Concrete Using Elastomeric Glue
- 3. 1/2" (12mm) Maple SuperBond™

EQUIPMENT



- 1. Direct Glue to Concrete Using Elastomeric Glue
- 2. 1/2" (12mm) Maple AcerBond™
- 3. Floor Plate
- 4. Flush Electrical Box or Scorer's Box
- 5. Flexible Conduit

It is the policy of Acer Flooring to continuously improve its line of products. Therefore, Acer Flooring reserves the right to change, modify or discontinue systems, specifications and accessories of all products at any time without notice or obligation to purchaser.



see us at
Sweets.com

