

ScissorLoc™ LP

FLOATING SYSTEMS

Aacer ScissorLoc LP is the low profile version of Aacer Flooring's popular ScissorLoc series. It's criss-cross, solid wood subfloor creates a dimensionally stable system with excellent natural ventilation capabilities. The option of the PowerVent™ Airflow system adds a feature which will detect moisture and start drying the system with mechanical airflow.

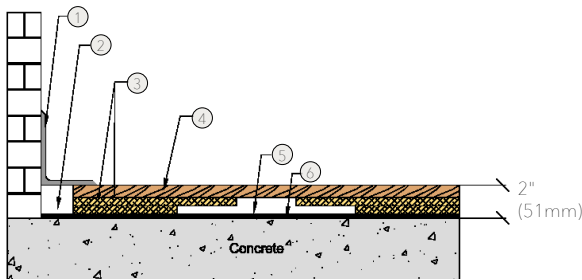


Available ScissorLoc™ Floor Systems: I, II, III, DC and LP



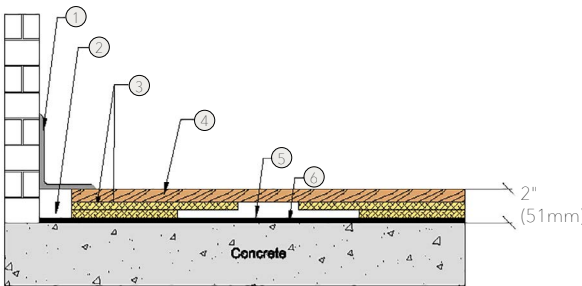
- | | |
|--|------------------------------------|
| 1. Precision-milled Acer Maple | 4. 1/4" (6mm) Performance Foam |
| 2. 1/2" x 6" (12mm x 140mm) Dimensional Pine | 5. 6mil Polyethylene Vapor Barrier |
| 3. 1/2" x 6" (12mm x 140mm) Dimensional Pine | 6. Concrete |

WALL BASE



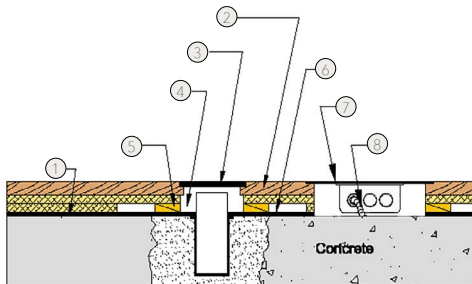
- 3" x 4" (76mm x 101mm) Vent Cove Base
- 1 1/2" (38mm) Min. Expansion Space
- (2) Layers 1/2" x 6" (12mm x 140mm) Dimensional Pine
- MFMA Maple Flooring 25/32" x 2 1/4" (20mm x 57mm)
- 1/4" (6mm) Performance Foam
- Vapor Barrier

THRESHOLD



- 1/4" (6mm) Aluminum Threshold
- 1 1/2" (38mm) Min. Expansion Space
- (2) Layers 1/2" x 6" (12mm x 140mm) Dimensional Pine
- MFMA Maple Flooring 25/32" x 2 1/4" (20mm x 57mm)
- 1/4" (6mm) Performance Foam
- Vapor Barrier

EQUIPMENT



- Vapor Barrier
- MFMA Maple Flooring 25/32" x 2 1/4" (20mm x 57mm)
- Floor Plate
- 1 1/2" (38mm) Min. Expansion Space Required at all Insert & Electrical Penetrations
- Solid Blocking at Insert Penetration
- 1/4" (6mm) Performance Foam
- Flush Electrical Box or Scorer's Box
- Flexible Conduit

Certified



Green Status and LEED Contributors



- FSC® Certified Maple - MRC7
- FSC® Certified Subfloor Components - MRC7
- EQ - 4.2
- Regional Materials - MRC5.1 & 5.2

Optional Versions

I, II, III, DC

Resilience

1/4" Performance Foam
*other options available

Optional Accessory

PowerVent™

Slab Depression

ScissorLoc™ LP
• 25/32" (20mm) flooring - 2" (51mm)
• 33/32" (26mm) flooring - 2 1/4" (57mm)

Optional Construction

Contact your Regional Sales Manager for system configurations.

Subfloor Construction

Solid Pine

System Type

Floating

Testing Laboratory



U.S. Patent #

#5,299,401

Warranty

Lifetime available

It is the policy of Acer Flooring to continuously improve its line of products. Therefore, Acer Flooring reserves the right to change, modify or discontinue systems, specifications and accessories of all products at any time without notice or obligation to purchaser.



see us at
Sweets.com

