

# AACER™

SPORTS FLOORING

## ScissorLoc™ II

ScissorLoc II is a dimensionally stable system with excellent natural ventilation capabilities due to its criss-cross, solid wood subfloor design. ScissorLoc II can withstand heavier loads because of its ability to adjust to the contour of the floor.

PowerVent™ Airflow system is a popular accompaniment to the ScissorLoc series. The system can detect moisture and start drying the floor system with mechanical airflow.



see us at  
[Sweets.com](http://Sweets.com)



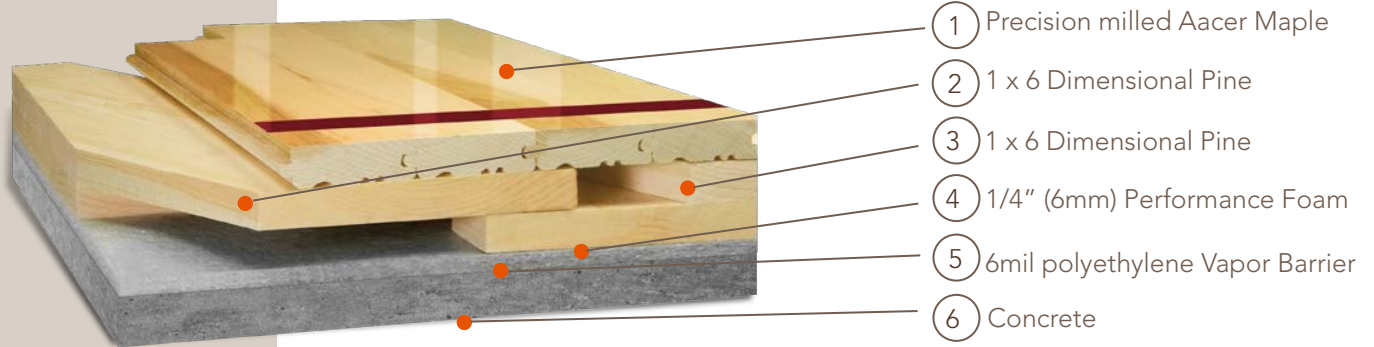
The mark of responsible forestry

# FLOATING



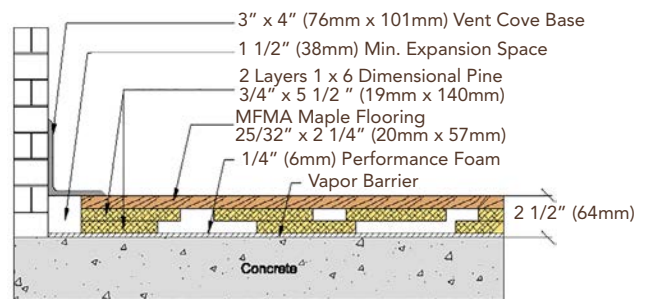
## ScissorLoc™ II

Available ScissorLoc™ Floor Systems: I, II, III, DC and LP

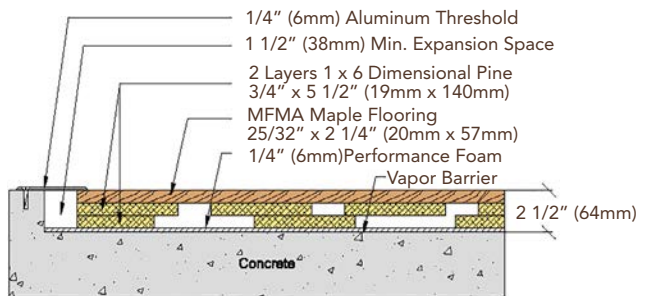


Certified	
Green Status LEED Contributors	 FSC® Certified Maple - MRc7 FSC® Certified Subfloor Components - MRc7 EQ - 4.2 Regional Materials - MRc5.1 & 5.2
Optional Versions	I, II, III, DC, LP, PowerVent™
Resilience	1/4" Performance Foam <i>*other pad options available</i>
Slab Depression	<b>ScissorLoc™ II</b> 25/32" (20mm) flooring - 2 1/2" (64mm) 33/32" (26mm) flooring - 2 3/4" (70mm)
Retrofit	System may be adjusted to fit any slab profile
Subfloor Construction	Solid Pine
System Type	Floating System
Testing Laboratory	
U.S. Patent#	#5,299,401
Warranty	Lifetime available

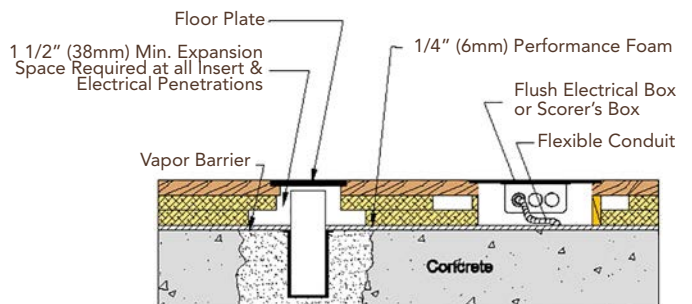
### WALL BASE



### THRESHOLD



### EQUIPMENT



AcerFlooring.com

877.582.1181

It is the policy of Acer Flooring to continuously improve its line of products. Therefore, Acer Flooring reserves the right to change, modify or discontinue systems, specifications and accessories of all products at any time without notice or obligation to purchaser.

July 2016