

# ScissorLoc™ I

## FLOATING SYSTEMS

ScissorLoc I is a dimensionally stable system with excellent natural ventilation capabilities due to its criss-cross, solid wood subfloor design. In the ScissorLoc series, ScissorLoc I is designed to withstand heavier loads and still provide a resilient and controlled playing surface.

PowerVent™ Airflow system is a popular accompaniment to the ScissorLoc series. The system can detect moisture and start drying the floor system with mechanical airflow.

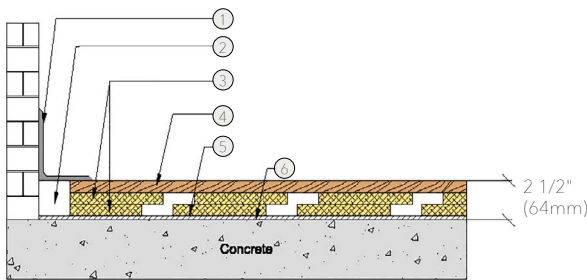


## Available ScissorLoc™ Floor Systems: I, II, III, DC and LP



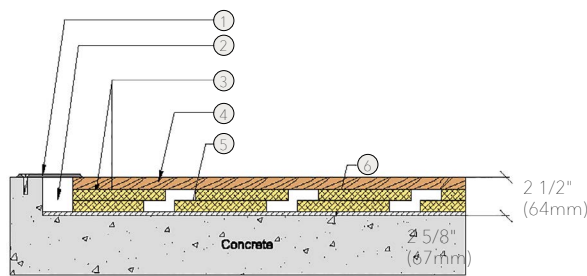
- 1. Precision-milled Acer Maple
- 2. 1" x 6" (19mm x 140mm) Dimensional Pine
- 3. 1" x 6" (19mm x 140mm) Dimensional Pine
- 4. 1/4" (6mm) Performance Foam
- 5. 6 mil Polyethylene Vapor Barrier
- 6. Concrete

### WALL BASE



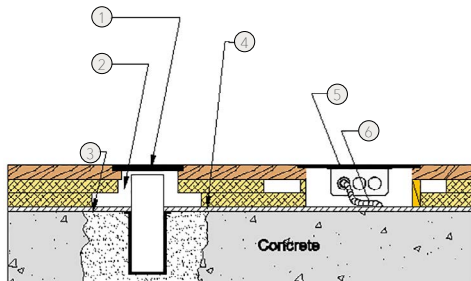
- 1. 3" x 4" (76mm x 101mm) Vent Cove Base
- 2. 1 1/2" (38mm) Min. Expansion Space
- 3. (2) Layers 1" x 6" (19mm x 140mm) Dimensional Pine
- 4. MFMA Maple Flooring 25/32" x 2 1/4" (20mm x 57mm)
- 5. 1/4" (6mm) Performance Foam
- 6. Vapor Barrier

### THRESHOLD



- 1. 1/4" (6mm) Aluminum Threshold
- 2. 1 1/2" (38mm) Min. Expansion Space
- 3. (2) Layers 1" x 6" (19mm x 140mm) Dimensional Pine
- 4. MFMA Maple Flooring 25/32" x 2 1/4" (20mm x 57mm)
- 5. 1/4" (6mm) Performance Foam
- 6. Vapor Barrier

### EQUIPMENT



- 1. Floor Plate
- 2. 1 1/2" (38mm) Min. Expansion Space Required at all Insert & Electrical Penetrations
- 3. Vapor Barrier
- 4. 1/4" (6mm) Performance Foam
- 5. Flush Electrical Box or Scorer's Box
- 6. Flexible Conduit

Certified



Green Status and LEED Contributors



- FSC® Certified Maple - MRC7
- FSC® Certified Subfloor Components - MRC7
- EQ - 4.2
- Regional Materials - MRC5.1 & 5.2

Optional Versions

I, II, III, DC, LP

Resilience

1/4" (6mm) Performance Foam  
\*other options available

Optional Accessory

PowerVent™

Slab Depression

ScissorLoc™ I  
• 25/32" (20mm) flooring - 2 1/2" (64mm)  
• 33/32" (26mm) flooring - 2 3/4" (70mm)

Optional Construction

Contact your Regional Sales Manager for system configurations.

Subfloor Construction

Solid Pine

System Type

Floating

Testing Laboratory



U.S. Patent #

#5,299,401

Warranty

Lifetime available

*It is the policy of Acer Flooring to continuously improve its line of products. Therefore, Acer Flooring reserves the right to change, modify or discontinue systems, specifications and accessories of all products at any time without notice or obligation to purchaser.*