

# PowerPlay™ VLP

FIXED RESILIENT SYSTEMS

A very low profile performance sports floor system with good shock absorption and resilience. This unique combination of high performance, economics and short installation time enhances athletic effectiveness in competition gymnasiums, multipurpose rooms and dance floors.



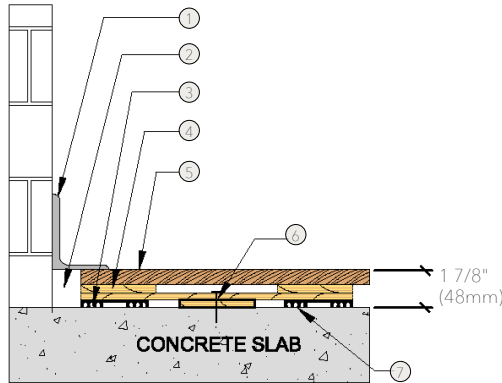
# PowerPlay™ VLP

The PowerPlay VLP is the lowest profile version of Acer Flooring's PowerPlay Series. It's an anchored performance sports floor system consisting of pre-engineered cushioned panels and Acer MFMA maple flooring.



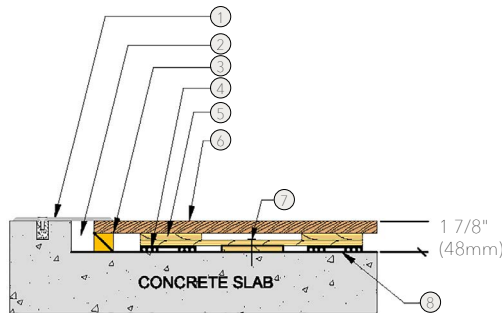
- 1. Precision-milled Acer Maple
- 2. Pre-Engineered PowerPlay™ Panels
- 3. AcerCush Pad
- 4. Heavy-Duty Concrete Fastener

## WALL BASE



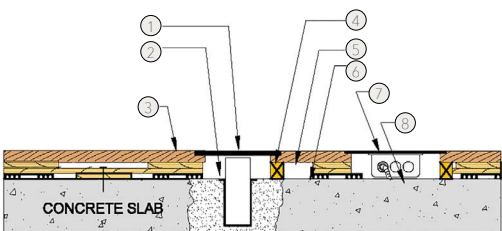
1. 3" x 4" (76mm x 101mm) Vent Cover Base
2. 1 1/2" (38mm) Min. Expansion Space
3. 3/8" (10mm) AcerCush Pad
4. Pre-Engineered PowerPlay™ Panel
5. MFMA Maple Flooring 25/32" x 2 1/4" (20mm x 57mm)
6. Concrete Fastener
7. Vapor Barrier

## THRESHOLD



1. 1/4" (6mm) Aluminum Threshold
2. 1 1/2" (38mm) Min. Expansion Space
3. Solid Blocking
4. 3/8" (10mm) AcerCush Pad
5. Pre-Engineered PowerPlay™ Panel
6. MFMA Maple Flooring 25/32" x 2 1/4" (20mm x 57mm)
7. Concrete Fastener
8. Vapor Barrier

## EQUIPMENT



1. Floor Plate
2. 1 1/2" (38mm) Min. Expansion Space Required at all Insert & Electrical Penetrations
3. MFMA Maple Flooring 25/32" x 2 1/4" (20mm x 57mm)
4. Solid Blocking at Floor Insert Penetrations
5. Pre-Engineered PowerPlay™ Panel
6. Vapor Barrier
7. Flush Electrical Box or Scorer's Box
8. Flexible Conduit

Anchorage

Certified

Drill and Pin



Green Status and LEED Contributors



- FSC® Certified Maple - MRC7
- FSC® Certified Subfloor Components - MRC7
- EQ - 4.2
- Regional Materials - MRC5.1 & 5.2

Optional Versions

PowerPlay LP, TP, VLP, II

Resilience

TriPower™, AcerFlex, AcerCush, EcoDIN Pads  
\*Other pad options available.  
Contact your Regional Sales Manager.

Slab Depression

3/8" (10mm) AcerCush Pads, PowerPlay VLP

- 25/32" (20mm) flooring - 1 7/8" (48mm)
- 33/32" (26mm) flooring - 2 1/8" (54mm)

Subfloor Construction

Pre-Engineered Panels

System Type

Fixed Resilient

Testing Laboratory



U.S. Patent #

Pending

Warranty

Lifetime available

*It is the policy of Acer Flooring to continuously improve its line of products. Therefore, Acer Flooring reserves the right to change, modify or discontinue systems, specifications and accessories of all products at any time without notice or obligation to purchaser.*



see us at  
**Sweets.com**

